

Product Datasheet

ENO2 Antibody (orb1252204)

Catalog Number	orb1252204
Category	Antibodies
Description	ENO2 Antibody
Target	ENO2
Clonality	Monoclonal
Species/Host	Mouse
Isotype	IgG2b
Conjugation	Unconjugated
Reactivity	Human, Mouse, Rat
Form/Appearance	Liquid
Concentration	0.2 mg/mL
Buffer/Preservatives	PBS with 0.1 mg/ml rAlbumin and 0.05% sodium azide
Purification	Protein G affinity chromatography
Immunogen	Amino acids 416-433 of human Neuron Specific Enolase were used as the immunogen for this NSE antibody.
UniProt ID	P09104
Tested applications	FC, IF, IHC, WB

Biorbyt Ltd.

7 Signet Court, Swann Road
Cambridge
CB5 8LA
United Kingdom

Email: info@biorbyt.com, support@biorbyt.com

Phone: [+44 \(0\)1223 859353](tel:+44(0)1223859353) | Fax: [+1 \(415\) 651-8558](tel:+1(415)651-8558)

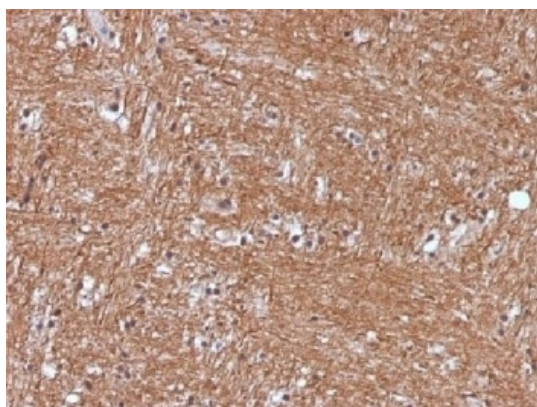
Biorbyt LLC

68 TW Alexander Drive
Research Triangle Park
Durham
NC 27713
United States

Email: info@biorbyt.com, support@biorbyt.com

Phone: [+1 \(415\) 906-5211](tel:+1(415)906-5211) | Fax: [+1 \(415\) 651-8558](tel:+1(415)651-8558)

Application notes	Western blot: 0.5-1 µg/mL Flow Cytometry: 0.5-1 ug/million cells in 0.1mL IF: 1-2 µg/mL IHC (FFPE): 0.1-0.2 µg/mL for 30 min at RT The concentration stated for each application is a general starting point. Variations in protocols, secondaries and substrates may require the NSE antibody to be titered up or down for optimal performance.
Antibody Type	Primary Antibody
Clone Number	ENO2/1375
Modifications	None
Storage	Maintain refrigerated at 2-8°C for up to 2 weeks. For long term storage store at -20°C in small aliquots to prevent freeze-thaw cycles.
Note	For research use only
Expiration Date	12 months from date of receipt.



IHC testing of FFPE human cerebellum with NSE antibody (clone ENO2/1375). Required HIER: boil sections in 10mM citrate buffer, pH6, for 10-20 min.

Biorbyt Ltd.

7 Signet Court, Swann Road
Cambridge
CB5 8LA
United Kingdom

Email: info@biorbyt.com, support@biorbyt.com

Phone: [+44 \(0\)1223 859353](tel:+44(0)1223859353) | Fax: [+1 \(415\) 651-8558](tel:+1(415)651-8558)

Biorbyt LLC

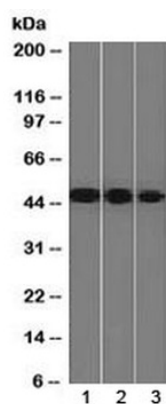
68 TW Alexander Drive
Research Triangle Park
Durham
NC 27713
United States

Email: info@biorbyt.com, support@biorbyt.com

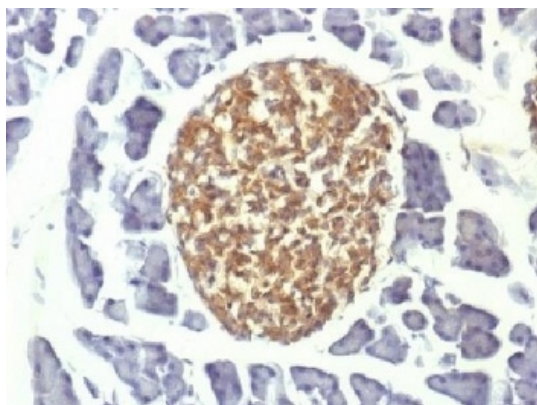
Phone: [+1 \(415\) 906-5211](tel:+1(415)906-5211) | Fax: [+1 \(415\) 651-8558](tel:+1(415)651-8558)



IHC testing of FFPE human pheochromocytoma with NSE antibody (clone ENO2/1375). Required HIER: boil sections in 10mM citrate buffer, pH6, for 10-20 min.



Western blot testing of human 1) Y79, 2) HeLa and 3) HepG2 cell lysate with NSE antibody (clone ENO2/1375). Predicted molecular weight ~47 kDa.



IHC testing of FFPE mouse pancreas with NSE antibody (clone ENO2/1375). Required HIER: boil sections in 10mM citrate buffer, pH6, for 10-20 min.

Biorbyt Ltd.

7 Signet Court, Swann Road
Cambridge
CB5 8LA
United Kingdom

Email: info@biorbyt.com, support@biorbyt.com

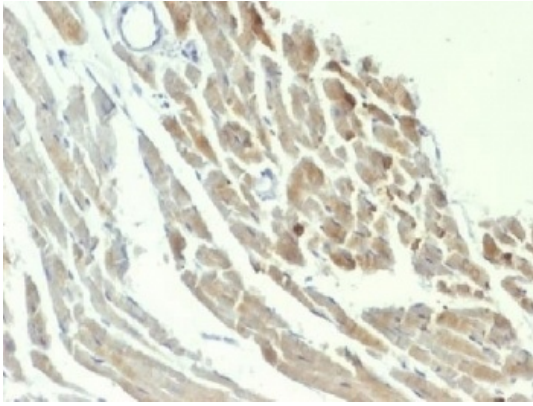
Phone: +44 (0)1223 859353 | Fax: +1 (415) 651-8558

Biorbyt LLC

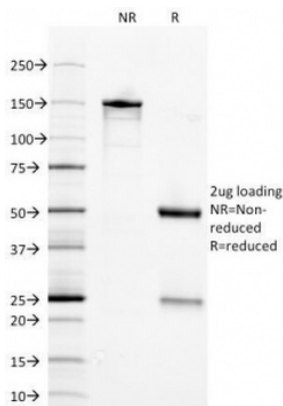
68 TW Alexander Drive
Research Triangle Park
Durham
NC 27713
United States

Email: info@biorbyt.com, support@biorbyt.com

Phone: +1 (415) 906-5211 | Fax: +1 (415) 651-8558



IHC testing of FFPE rat heart with NSE antibody (clone ENO2/1375). Required HIER: boil sections in 10mM citrate buffer, pH6, for 10-20 min.



SDS-PAGE Analysis of Purified, BSA-Free NSE Antibody (clone ENO2/1375). Confirmation of Integrity and Purity of the Antibody.

Biorbyt Ltd.

7 Signet Court, Swann Road
Cambridge
CB5 8LA
United Kingdom

Email: info@biorbyt.com, support@biorbyt.com

Phone: [+44 \(0\)1223 859353](tel:+44(0)1223859353) | Fax: [+1 \(415\) 651-8558](tel:+1(415)651-8558)

Biorbyt LLC

68 TW Alexander Drive
Research Triangle Park
Durham
NC 27713
United States

Email: info@biorbyt.com, support@biorbyt.com

Phone: [+1 \(415\) 906-5211](tel:+1(415)906-5211) | Fax: [+1 \(415\) 651-8558](tel:+1(415)651-8558)