

Product Datasheet

KRT8 Antibody (FITC) (orb1251465)

| | |
|-----------------------------|--|
| Catalog Number | orb1251465 |
| Category | Antibodies |
| Description | KRT8 Antibody (FITC) |
| Target | KRT8 |
| Clonality | Monoclonal |
| Species/Host | Mouse |
| Isotype | IgG2a |
| Conjugation | FITC |
| Reactivity | Human |
| Form/Appearance | Liquid |
| Concentration | 0.5 mg/mL |
| Buffer/Preservatives | Supplied in PBS/NaN ₃ |
| Immunogen | Recombinant C-terminal cytokeratin 8 |
| UniProt ID | P05787 |
| Tested applications | FC |
| Application notes | Cytokeratin 8 Antibody [SB37b] for use in flow cytometry, immunohistochemistry / immunocytochemistry, and western blotting assays. |
| Specificity | Cytokeratin 8 |

Biorbyt Ltd.

7 Signet Court, Swann Road
Cambridge
CB5 8LA
United Kingdom

Email: info@biorbyt.com, support@biorbyt.com

Phone: [+44 \(0\)1223 859353](tel:+44(0)1223859353) | Fax: [+1 \(415\) 651-8558](tel:+1(415)651-8558)

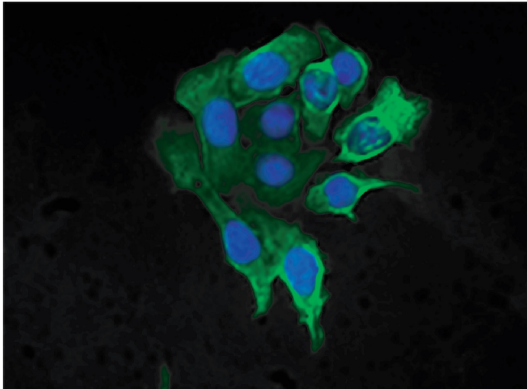
Biorbyt LLC

68 TW Alexander Drive
Research Triangle Park
Durham
NC 27713-2847
United States

Email: info@biorbyt.com, support@biorbyt.com

Phone: [+1 \(415\) 906-5211](tel:+1(415)906-5211) | Fax: [+1 \(415\) 651-8558](tel:+1(415)651-8558)

| | |
|------------------------|---|
| Antibody Type | Primary Antibody |
| Clone Number | [SB37b] |
| Modifications | None |
| Storage | Maintain refrigerated at 2-8°C for up to 2 weeks. For long term storage store at -20°C in small aliquots to prevent freeze-thaw cycles. |
| Note | For research use only |
| NCBI | P05787 |
| Expiration Date | 12 months from date of receipt. |



Human pancreatic carcinoma cell line MIA PaCa-2 was stained with Mouse Anti-Cytokeratin 8-FITC (Cat. No. orb1251465).

Biorbyt Ltd.

7 Signet Court, Swann Road
Cambridge
CB5 8LA
United Kingdom

Email: info@biorbyt.com, support@biorbyt.com

Phone: [+44 \(0\)1223 859353](tel:+44(0)1223859353) | Fax: [+1 \(415\) 651-8558](tel:+1(415)651-8558)

Biorbyt LLC

68 TW Alexander Drive
Research Triangle Park
Durham
NC 27713-2847
United States

Email: info@biorbyt.com, support@biorbyt.com

Phone: [+1 \(415\) 906-5211](tel:+1(415)906-5211) | Fax: [+1 \(415\) 651-8558](tel:+1(415)651-8558)