

## Product Datasheet

### CBR1 Antibody (orb1247699)

<b>Catalog Number</b>	orb1247699
<b>Category</b>	Antibodies
<b>Description</b>	CBR1 Antibody
<b>Target</b>	CBR1
<b>Clonality</b>	Polyclonal
<b>Species/Host</b>	Goat
<b>Conjugation</b>	Unconjugated
<b>Reactivity</b>	Human
<b>Form/Appearance</b>	Liquid
<b>Concentration</b>	500 ug/mL
<b>Buffer/Preservatives</b>	Supplied at 0.5 mg/ml in Tris saline, 0.02% sodium azide, pH 7.3 with 0.5% bovine serum albumin. Aliquot and store at -20°C. Minimize freezing and thawing.
<b>Purification</b>	Purified from goat serum by ammonium sulphate precipitation followed by antigen affinity chromatography using the immunizing peptide.
<b>Immunogen</b>	The immunogen for this antibody is: C-HGQFVSEKRVEQW
<b>UniProt ID</b>	<b>P16152</b>
<b>Tested applications</b>	ELISA, IF, IHC, WB

**Biorbyt Ltd.**

7 Signet Court, Swann Road  
Cambridge  
CB5 8LA  
United Kingdom

Email: [info@biorbyt.com](mailto:info@biorbyt.com), [support@biorbyt.com](mailto:support@biorbyt.com)  
Phone: [+44 \(0\)1223 859353](tel:+44(0)1223859353) | Fax: [+1 \(415\) 651-8558](tel:+1(415)651-8558)

**Biorbyt LLC**

68 TW Alexander Drive  
Research Triangle Park  
Durham  
NC 27713  
United States

Email: [info@biorbyt.com](mailto:info@biorbyt.com), [support@biorbyt.com](mailto:support@biorbyt.com)  
Phone: [+1 \(415\) 906-5211](tel:+1(415)906-5211) | Fax: [+1 \(415\) 651-8558](tel:+1(415)651-8558)

**Application notes**

Peptide ELISA: antibody detection limit dilution 1:8000. Western Blot: Approx 30-35kDa band observed in lysates of Glioblastoma cell line U251 and in Human Kidney lysates (calculated MW of 30.4kDa according to NP\_001748.1). Recommended concentration: 0.1-0.3µg/mL. Primary incubation 1 hour at room temperature. Immunohistochemistry: In paraffin embedded Human Kidney shows cytoplasmic staining of epithelial cells of renal tubules. Recommended concentration: 1-2µg/mL. Immunofluorescence: Strong expression of the protein seen in the cytoplasm of U251 cells. Recommended concentration: 10µg/mL.

**Antibody Type**

Primary Antibody

**Modifications**

None

**Storage**

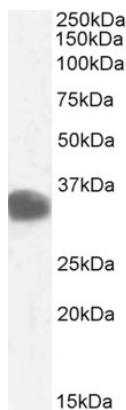
Maintain refrigerated at 2-8°C for up to 2 weeks. For long term storage store at -20°C in small aliquots to prevent freeze-thaw cycles.

**Note**

For research use only

**NCBI**[NP\\_001748.1](#)**Expiration Date**

12 months from date of receipt.



orb1247699 (0.1 ug/ml) staining of Human Kidney lysate (35 ug protein in RIPA buffer). Detected by chemiluminescence.

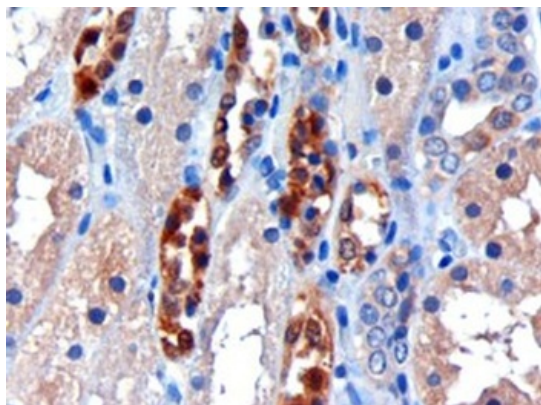
**Biorbyt Ltd.**

7 Signet Court, Swann Road  
Cambridge  
CB5 8LA  
United Kingdom

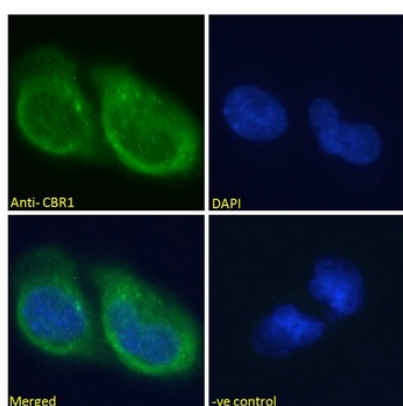
Email: [info@biorbyt.com](mailto:info@biorbyt.com), [support@biorbyt.com](mailto:support@biorbyt.com)Phone: [+44 \(0\)1223 859353](tel:+44(0)1223859353) | Fax: [+1 \(415\) 651-8558](tel:+1(415)651-8558)**Biorbyt LLC**

68 TW Alexander Drive  
Research Triangle Park  
Durham  
NC 27713  
United States

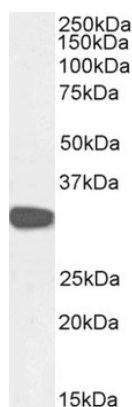
Email: [info@biorbyt.com](mailto:info@biorbyt.com), [support@biorbyt.com](mailto:support@biorbyt.com)Phone: [+1 \(415\) 906-5211](tel:+1(415)906-5211) | Fax: [+1 \(415\) 651-8558](tel:+1(415)651-8558)



orb1247699 (3 ug/ml) staining of paraffin embedded Human Kidney. Microwaved antigen retrieval with citrate buffer pH 6, HRP-staining.



orb1247699 Immunofluorescence analysis of paraformaldehyde fixed U251 cells, permeabilized with 0.15% Triton. Primary incubation 1hr (10 ug/ml) followed by Alexa Fluor 488 secondary antibody (2 ug/ml), showing cytoplasmic staining. The nuclear stain is DAPI.



orb1247699 (0.1 ug/ml) staining of U251 cell lysate (35 ug protein in RIPA buffer). Detected by chemiluminescence.

**Biorbyt Ltd.**

7 Signet Court, Swann Road  
Cambridge  
CB5 8LA  
United Kingdom

Email: [info@biorbyt.com](mailto:info@biorbyt.com), [support@biorbyt.com](mailto:support@biorbyt.com)

Phone: [+44 \(0\)1223 859353](tel:+44(0)1223859353) | Fax: [+1 \(415\) 651-8558](tel:+1(415)651-8558)

**Biorbyt LLC**

68 TW Alexander Drive  
Research Triangle Park  
Durham  
NC 27713  
United States

Email: [info@biorbyt.com](mailto:info@biorbyt.com), [support@biorbyt.com](mailto:support@biorbyt.com)

Phone: [+1 \(415\) 906-5211](tel:+1(415)906-5211) | Fax: [+1 \(415\) 651-8558](tel:+1(415)651-8558)