

Product Datasheet

KLF2 Rabbit Polyclonal Antibody (PE) (orb124716)

Catalog Number	orb124716
Category	Antibodies
Description	KLF2 Rabbit Polyclonal Antibody (PE) is a PE conjugated antibody targeting KLF2. This antibody is suitable for FC, IF. It exhibits reactivity with Human, Mouse, Rat samples.
Target	KLF2
Clonality	Polyclonal
Species/Host	Rabbit
Isotype	IgG
Conjugation	PE
Reactivity	Human, Mouse, Rat
Predicted Reactivity	Bovine, Equine, Porcine, Rabbit, Sheep
Concentration	1mg/ml
Buffer/Preservatives	0.01M TBS (pH7.4) with 1% rAlbumin, 0.02% Proclin300 and 50% Glycerol.
Purification	Affinity purified by Protein A
Immunogen	KLH conjugated synthetic peptide derived from human KLF2 (251-355/355aa)
Tested applications	FC, IF
Dilution range	Flow-Cyt=1:ug/Test, IF=1:100-500
Antibody Type	Primary Antibody

Biorbyt Ltd.

7 Signet Court, Swann Road
Cambridge
CB5 8LA
United Kingdom

Email: info@biorbyt.com, support@biorbyt.com

Phone: [+44 \(0\)1223 859353](tel:+44(0)1223859353) | Fax: [+1 \(415\) 651-8558](tel:+1(415)651-8558)

Biorbyt LLC

68 TW Alexander Drive
Research Triangle Park
Durham
NC 27713
United States

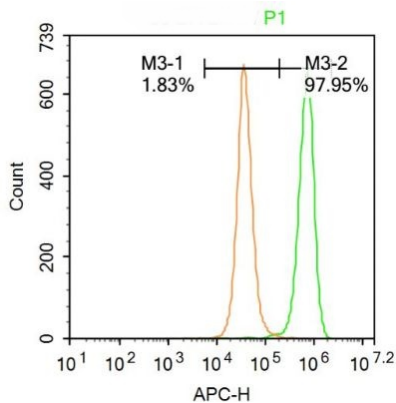
Email: info@biorbyt.com, support@biorbyt.com

Phone: [+1 \(415\) 906-5211](tel:+1(415)906-5211) | Fax: [+1 \(415\) 651-8558](tel:+1(415)651-8558)

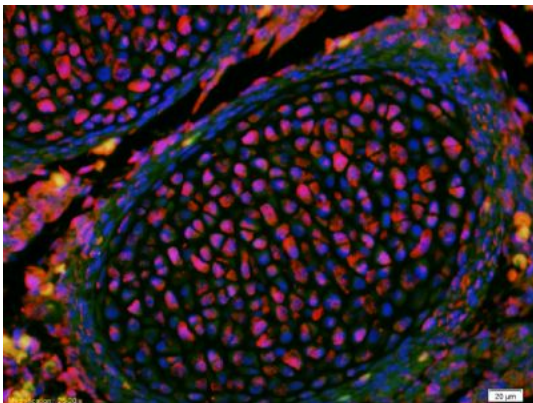
Storage Shipped at 4°C. Store at -20°C for one year. Avoid repeated freeze/thaw cycles.

Note For research use only

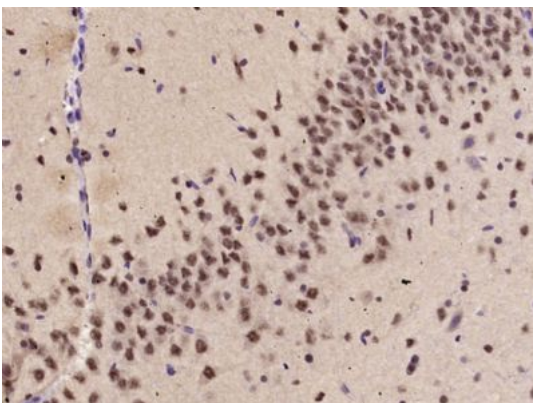
Expiration Date 12 months from date of receipt.



Flow cytometric analysis of A431 cell using KLF2 antibody (PE).



Immunofluorescence analysis of Mouse embryos using KLF2 antibody (PE).



Immunohistochemical staining of Rat brain using KLF2 antibody (PE).

Biorbyt Ltd.

7 Signet Court, Swann Road
Cambridge
CB5 8LA
United Kingdom

Email: info@biorbyt.com, support@biorbyt.com

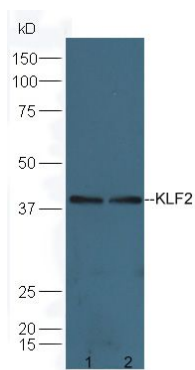
Phone: +44 (0)1223 859353 | Fax: +1 (415) 651-8558

Biorbyt LLC

68 TW Alexander Drive
Research Triangle Park
Durham
NC 27713
United States

Email: info@biorbyt.com, support@biorbyt.com

Phone: +1 (415) 906-5211 | Fax: +1 (415) 651-8558



Western blot analysis of Brain (Mouse) Lysate (Lane 1), HepG2 Cell Lysate (Lane 2) using KLF2 antibody (PE).

Biorbyt Ltd.

7 Signet Court, Swann Road
Cambridge
CB5 8LA
United Kingdom

Email: info@biorbyt.com, support@biorbyt.com

Phone: [+44 \(0\)1223 859353](tel:+44(0)1223859353) | Fax: [+1 \(415\) 651-8558](tel:+1(415)651-8558)

Biorbyt LLC

68 TW Alexander Drive
Research Triangle Park
Durham
NC 27713
United States

Email: info@biorbyt.com, support@biorbyt.com

Phone: [+1 \(415\) 906-5211](tel:+1(415)906-5211) | Fax: [+1 \(415\) 651-8558](tel:+1(415)651-8558)