

## Product Datasheet

### GRSF1 Antibody (orb1242184)

|                             |  |
|-----------------------------|--|
| <b>Catalog Number</b>       | orb1242184   |
| <b>Category</b>             | Antibodies   |
| <b>Description</b>          | GRSF1 Antibody   |
| <b>Target</b>               | GRSF1  |
| <b>Clonality</b>            | Polyclonal   |
| <b>Species/Host</b>         | Rabbit   |
| <b>Conjugation</b>          | Unconjugated   |
| <b>Reactivity</b>           | Human, Mouse, Rat  |
| <b>Form/Appearance</b>      | Liquid   |
| <b>Concentration</b>        | batch dependent  |
| <b>Buffer/Preservatives</b> | Purified antibody supplied in 1x PBS buffer with 0.09% (w/v) sodium azide and 2% sucrose.              |
| <b>Purification</b>         | Antibody is purified by peptide affinity chromatography method.  |
| <b>Immunogen</b>            | Antibody produced in rabbits immunized with a synthetic peptide corresponding a region of human GRSF1. |
| <b>UniProt ID</b>           | <b>Q12849</b>  |
| <b>MW</b>                   | 53 kDa   |
| <b>Tested applications</b>  | ELISA, WB  |

**Biorbyt Ltd.**

7 Signet Court, Swann Road  
Cambridge  
CB5 8LA  
United Kingdom

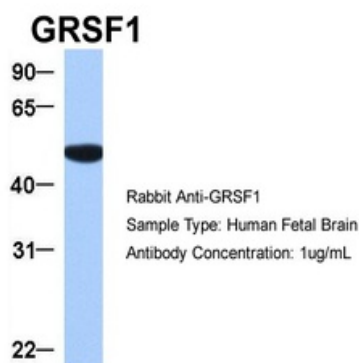
Email: [info@biorbyt.com](mailto:info@biorbyt.com), [support@biorbyt.com](mailto:support@biorbyt.com)  
Phone: [+44 \(0\)1223 859353](tel:+44(0)1223859353) | Fax: [+1 \(415\) 651-8558](tel:+1(415)651-8558)

**Biorbyt LLC**

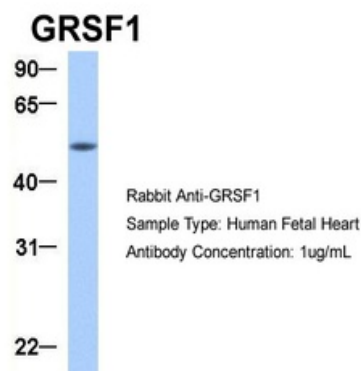
68 TW Alexander Drive  
Research Triangle Park  
Durham  
NC 27713  
United States

Email: [info@biorbyt.com](mailto:info@biorbyt.com), [support@biorbyt.com](mailto:support@biorbyt.com)  
Phone: [+1 \(415\) 906-5211](tel:+1(415)906-5211) | Fax: [+1 \(415\) 651-8558](tel:+1(415)651-8558)

|                          |  |
|--------------------------|--|
| <b>Application notes</b> | GRSF1 antibody can be used for detection of GRSF1 by ELISA at 1:62500. GRSF1 antibody can be used for detection of GRSF1 by western blot at 0.5 µg/mL, and HRP conjugated secondary antibody should be diluted 1:50,000 - 100,000. |
| <b>Antibody Type</b>     | Primary Antibody   |
| <b>Modifications</b>     | None   |
| <b>Storage</b>           | Maintain refrigerated at 2-8°C for up to 2 weeks. For long term storage store at -20°C in small aliquots to prevent freeze-thaw cycles.  |
| <b>Note</b>              | For research use only  |
| <b>NCBI</b>              | <b>NP_002083</b>   |
| <b>Expiration Date</b>   | 12 months from date of receipt.  |



Antibody used in WB on Hum. Fetal Brain at 1 ug/ml.



Antibody used in WB on Hum. Fetal Heart at 1 ug/ml.

**Biorbyt Ltd.**

7 Signet Court, Swann Road  
Cambridge  
CB5 8LA  
United Kingdom

Email: [info@biorbyt.com](mailto:info@biorbyt.com), [support@biorbyt.com](mailto:support@biorbyt.com)

Phone: [+44 \(0\)1223 859353](tel:+44(0)1223859353) | Fax: [+1 \(415\) 651-8558](tel:+1(415)651-8558)

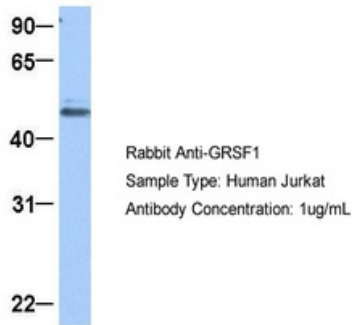
**Biorbyt LLC**

68 TW Alexander Drive  
Research Triangle Park  
Durham  
NC 27713  
United States

Email: [info@biorbyt.com](mailto:info@biorbyt.com), [support@biorbyt.com](mailto:support@biorbyt.com)

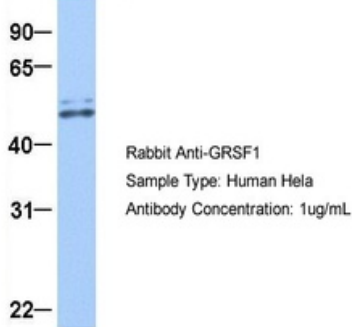
Phone: [+1 \(415\) 906-5211](tel:+1(415)906-5211) | Fax: [+1 \(415\) 651-8558](tel:+1(415)651-8558)

**GRSF1**



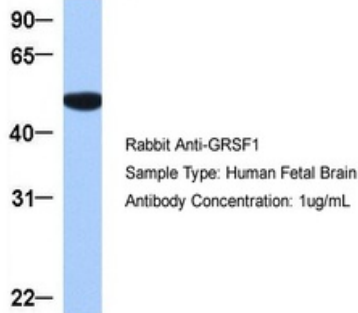
Antibody used in WB on Human Jurkat 1 ug/ml.

**GRSF1**



Antibody used in WB on Human HeLa at 1 ug/ml.

**GRSF1**



Antibody used in WB on Hum. Fetal Brain at 1 ug/ml.

**Biorbyt Ltd.**

7 Signet Court, Swann Road  
Cambridge  
CB5 8LA  
United Kingdom

Email: [info@biorbyt.com](mailto:info@biorbyt.com), [support@biorbyt.com](mailto:support@biorbyt.com)

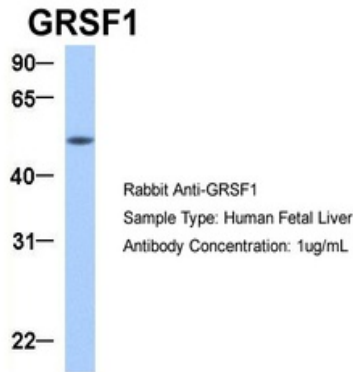
Phone: [+44 \(0\)1223 859353](tel:+44(0)1223859353) | Fax: [+1 \(415\) 651-8558](tel:+1(415)651-8558)

**Biorbyt LLC**

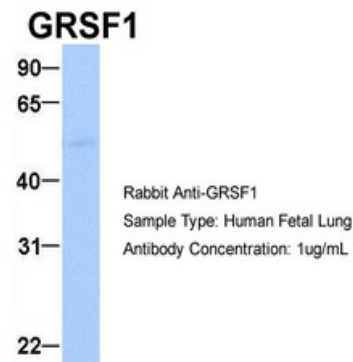
68 TW Alexander Drive  
Research Triangle Park  
Durham  
NC 27713  
United States

Email: [info@biorbyt.com](mailto:info@biorbyt.com), [support@biorbyt.com](mailto:support@biorbyt.com)

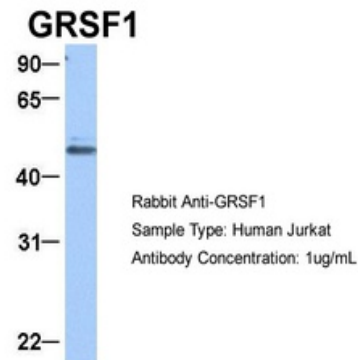
Phone: [+1 \(415\) 906-5211](tel:+1(415)906-5211) | Fax: [+1 \(415\) 651-8558](tel:+1(415)651-8558)



Antibody used in WB on Hum. Fetal Liver at 1 ug/ml.



Antibody used in WB on Hum. Fetal Lung at 1 ug/ml.



Antibody used in WB on Human Jurkat 1 ug/ml.

**Biorbyt Ltd.**

7 Signet Court, Swann Road  
Cambridge  
CB5 8LA  
United Kingdom

Email: [info@biorbyt.com](mailto:info@biorbyt.com), [support@biorbyt.com](mailto:support@biorbyt.com)

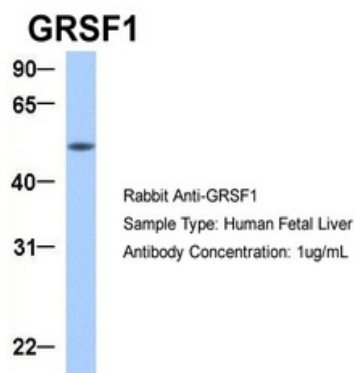
Phone: [+44 \(0\)1223 859353](tel:+44(0)1223859353) | Fax: [+1 \(415\) 651-8558](tel:+1(415)651-8558)

**Biorbyt LLC**

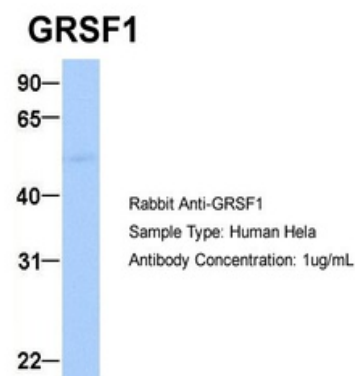
68 TW Alexander Drive  
Research Triangle Park  
Durham  
NC 27713  
United States

Email: [info@biorbyt.com](mailto:info@biorbyt.com), [support@biorbyt.com](mailto:support@biorbyt.com)

Phone: [+1 \(415\) 906-5211](tel:+1(415)906-5211) | Fax: [+1 \(415\) 651-8558](tel:+1(415)651-8558)



Antibody used in WB on Hum. Fetal Liver at 1 ug/ml.



Antibody used in WB on Human HeLa at 1 ug/ml.

**Biorbyt Ltd.**

7 Signet Court, Swann Road  
Cambridge  
CB5 8LA  
United Kingdom

Email: [info@biorbyt.com](mailto:info@biorbyt.com), [support@biorbyt.com](mailto:support@biorbyt.com)

Phone: [+44 \(0\)1223 859353](tel:+44(0)1223859353) | Fax: [+1 \(415\) 651-8558](tel:+1(415)651-8558)

**Biorbyt LLC**

68 TW Alexander Drive  
Research Triangle Park  
Durham  
NC 27713  
United States

Email: [info@biorbyt.com](mailto:info@biorbyt.com), [support@biorbyt.com](mailto:support@biorbyt.com)

Phone: [+1 \(415\) 906-5211](tel:+1(415)906-5211) | Fax: [+1 \(415\) 651-8558](tel:+1(415)651-8558)