

Product Datasheet

TLR3 Antibody (orb1240199)

Catalog Number	orb1240199
Category	Antibodies
Description	TLR3 Antibody
Target	TLR3
Clonality	Polyclonal
Species/Host	Rabbit
Isotype	IgG
Conjugation	Unconjugated
Reactivity	Human, Mouse
Predicted Reactivity	Bovine
Form/Appearance	Liquid
Concentration	1 mg/mL
Buffer/Preservatives	TLR3 Antibody is supplied in PBS containing 0.02% sodium azide.
Purification	TLR3 Antibody is affinity chromatography purified via peptide column.
Immunogen	TLR3 antibody was raised against a peptide corresponding to 15 amino acids near the carboxy terminus of human TLR3. The immunogen is located within amino acids 780 - 830 of TLR3.
UniProt ID	O15455
MW	Predicted: 99 kDa Observed: 105 kDa

Biorbyt Ltd.

7 Signet Court, Swann Road
Cambridge
CB5 8LA
United Kingdom

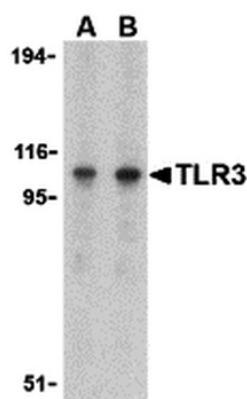
Email: info@biorbyt.com, support@biorbyt.com
Phone: [+44 \(0\)1223 859353](tel:+44(0)1223859353) | Fax: [+1 \(415\) 651-8558](tel:+1(415)651-8558)

Biorbyt LLC

68 TW Alexander Drive
Research Triangle Park
Durham
NC 27713
United States

Email: info@biorbyt.com, support@biorbyt.com
Phone: [+1 \(415\) 906-5211](tel:+1(415)906-5211) | Fax: [+1 \(415\) 651-8558](tel:+1(415)651-8558)

Tested applications	ELISA, ICC, IF, IHC-P, WB
Application notes	TLR3 antibody can be used for detection of TLR3 by Western blot at 0.5 to 2 µg/mL. Antibody can also be used for immunocytochemistry starting at 1 µg/mL and immunohistochemistry starting at 2 µg/mL. For immunofluorescence start at 10 µg/mL. Antibody validated: Western Blot in human and mouse samples; Immunohistochemistry in human and mouse samples; Immunocytochemistry in mouse samples and Immunofluorescence in human and mouse samples. All other applications and species not yet tested.
Antibody Type	Primary Antibody
Modifications	None
Storage	Maintain refrigerated at 2-8°C for up to 2 weeks. For long term storage store at -20°C in small aliquots to prevent freeze-thaw cycles.
Note	For research use only
NCBI	O15455
Expiration Date	12 months from date of receipt.



Western blot analysis of TLR3 in Daudi cell lysate with TLR3 antibody at (A) 1 and (B) 2 µg/mL.

Biorbyt Ltd.

7 Signet Court, Swann Road
Cambridge
CB5 8LA
United Kingdom

Email: info@biorbyt.com, support@biorbyt.com

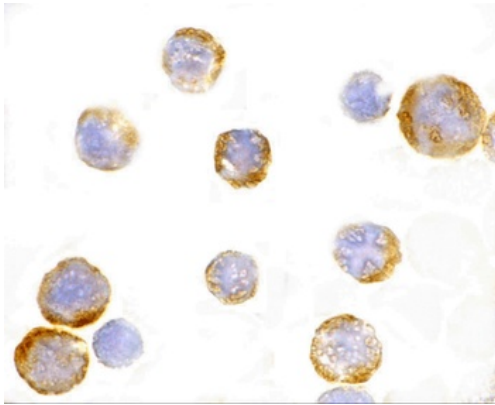
Phone: +44 (0)1223 859353 | Fax: +1 (415) 651-8558

Biorbyt LLC

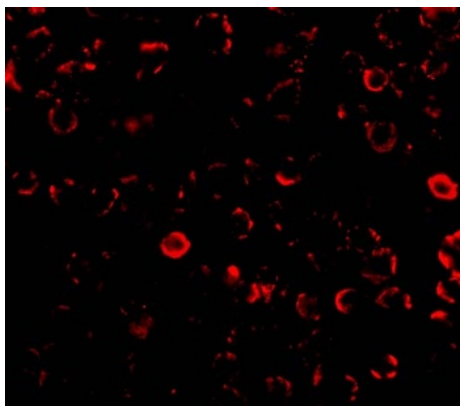
68 TW Alexander Drive
Research Triangle Park
Durham
NC 27713
United States

Email: info@biorbyt.com, support@biorbyt.com

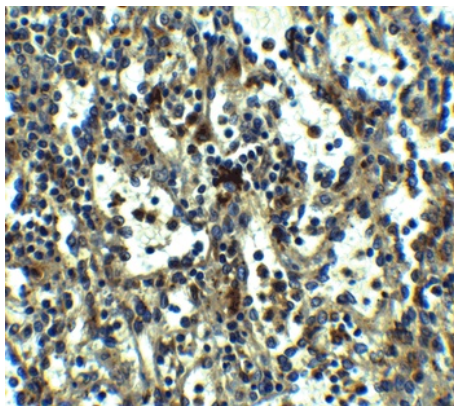
Phone: +1 (415) 906-5211 | Fax: +1 (415) 651-8558



Immunocytochemistry of TLR3 in EL4 cells with TLR3 antibody at 1 µg/mL.



Immunofluorescence of TLR3 in EL4 cells with TLR3 antibody at 10 µg/mL.



Immunohistochemistry of TLR3 in human spleen tissue with TLR3 antibody at 5 µg/mL.

Biorbyt Ltd.

7 Signet Court, Swann Road
Cambridge
CB5 8LA
United Kingdom

Email: info@biorbyt.com, support@biorbyt.com

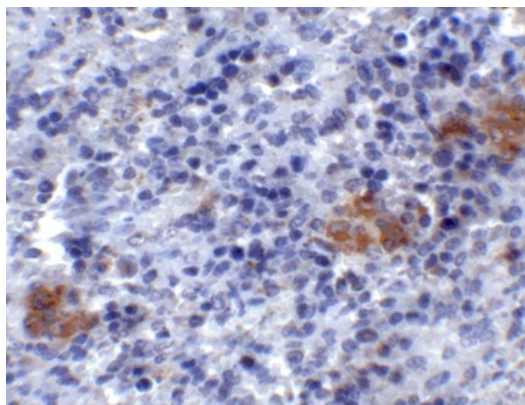
Phone: [+44 \(0\)1223 859353](tel:+44(0)1223859353) | Fax: [+1 \(415\) 651-8558](tel:+1(415)651-8558)

Biorbyt LLC

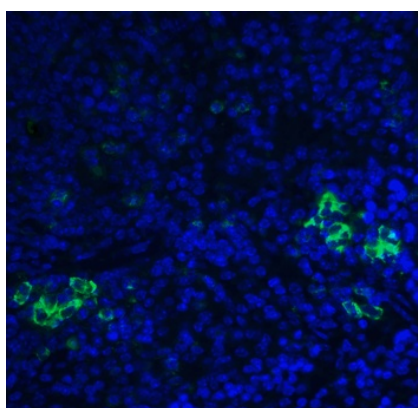
68 TW Alexander Drive
Research Triangle Park
Durham
NC 27713
United States

Email: info@biorbyt.com, support@biorbyt.com

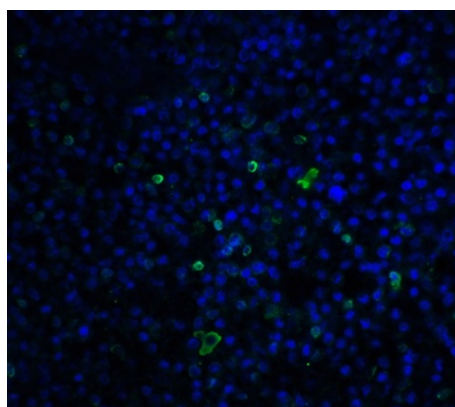
Phone: [+1 \(415\) 906-5211](tel:+1(415)906-5211) | Fax: [+1 \(415\) 651-8558](tel:+1(415)651-8558)



Immunohistochemistry of TLR3 in mouse spleen tissue with TLR3 antibody at 2 µg/ml.



Immunofluorescence of TLR3 in mouse spleen tissue with TLR3 antibody at 20 µg/ml. Green: TLR3 Antibody (orb1240199) Blue: DAPI staining.



Immunofluorescence of TLR3 in human spleen tissue with TLR3 antibody at 20 µg/ml. Green: TLR3 Antibody (orb1240199) Blue: DAPI staining.

Biorbyt Ltd.

7 Signet Court, Swann Road
Cambridge
CB5 8LA
United Kingdom

Email: info@biorbyt.com, support@biorbyt.com

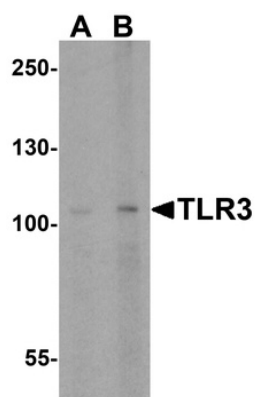
Phone: [+44 \(0\)1223 859353](tel:+44(0)1223859353) | Fax: [+1 \(415\) 651-8558](tel:+1(415)651-8558)

Biorbyt LLC

68 TW Alexander Drive
Research Triangle Park
Durham
NC 27713
United States

Email: info@biorbyt.com, support@biorbyt.com

Phone: [+1 \(415\) 906-5211](tel:+1(415)906-5211) | Fax: [+1 \(415\) 651-8558](tel:+1(415)651-8558)



Western blot analysis of TLR3 expression in mouse spleen tissue lysate with TLR3 antibody at (A) 0.5 and (B) 1 µg/ml.

Biorbyt Ltd.

7 Signet Court, Swann Road
Cambridge
CB5 8LA
United Kingdom

Email: info@biorbyt.com, support@biorbyt.com

Phone: [+44 \(0\)1223 859353](tel:+44(0)1223859353) | Fax: [+1 \(415\) 651-8558](tel:+1(415)651-8558)

Biorbyt LLC

68 TW Alexander Drive
Research Triangle Park
Durham
NC 27713
United States

Email: info@biorbyt.com, support@biorbyt.com

Phone: [+1 \(415\) 906-5211](tel:+1(415)906-5211) | Fax: [+1 \(415\) 651-8558](tel:+1(415)651-8558)