

Product Datasheet

SAMHD1 (phospho Thr592) Antibody (orb1239966)

Catalog Number	orb1239966
Category	Antibodies
Description	SAMHD1 (phospho Thr592) Antibody
Target	SAMHD1 (phospho Thr592)
Clonality	Polyclonal
Species/Host	Rabbit
Isotype	IgG
Conjugation	Unconjugated
Reactivity	Human, Mouse
Form/Appearance	Liquid
Concentration	1 mg/mL
Buffer/Preservatives	SAMHD1 (phospho Thr592) antibody is supplied in PBS containing 0.02% sodium azide.
Purification	SAMHD1 (phospho Thr592) antibody is affinity chromatography purified via peptide column.
Immunogen	Anti-SAMHD1 (phospho Thr592) antibody (orb1239966) was raised against a phosphorylated peptide corresponding to 18 amino acids near the carboxy terminus of human Phospho-SAMHD1 surrounding T592.
UniProt ID	Q9Y3Z3
MW	Predicted: 72kD Observed: 72 kD

Biorbyt Ltd.

7 Signet Court, Swann Road
Cambridge
CB5 8LA
United Kingdom

Email: info@biorbyt.com, support@biorbyt.com

Phone: [+44 \(0\)1223 859353](tel:+44(0)1223859353) | Fax: [+1 \(415\) 651-8558](tel:+1(415)651-8558)

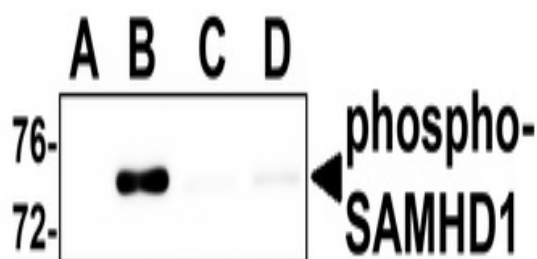
Biorbyt LLC

68 TW Alexander Drive
Research Triangle Park
Durham
NC 27713
United States

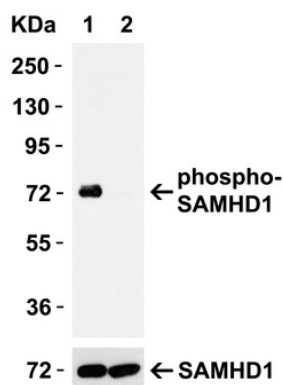
Email: info@biorbyt.com, support@biorbyt.com

Phone: [+1 \(415\) 906-5211](tel:+1(415)906-5211) | Fax: [+1 \(415\) 651-8558](tel:+1(415)651-8558)

Tested applications	ELISA, IF, IHC, WB
Specificity	Phospho-SAMHD1 antibody will only detect the phosphorylated form of SAMHD1.
Antibody Type	Primary Antibody
Modifications	None
Storage	Maintain refrigerated at 2-8°C for up to 2 weeks. For long term storage store at -20°C in small aliquots to prevent freeze-thaw cycles.
Note	For research use only
NCBI	NP_056289
Expiration Date	12 months from date of receipt.



Western Blot Validation in Human 293 Cells. Loading: 15 µg of lysates per lane. Antibodies: SAMHD1 (phospho Thr592) orb1239966 (1 µg/mL), 1h incubation at RT in 5% NFDm/TBST. Secondary: Goat anti-rabbit IgG HRP conjugate at 1:10000 dilution. 293 cells were transfected with (A) empty expression vector, (B) wild-type SAMHD1, (C) SAMHD1 (mutation T592A) and (D) SAMHD1 (mutation T592E).



Mutant Validation in 293T Transfected Cells. Loading: 15 µg of lysates per lane. Antibodies: SAMHD1 (phospho Thr592) orb1239966 (0.05 µg/mL), 1h incubation at RT in 5% NFDm/TBST. Secondary: Goat anti-rabbit IgG HRP conjugate at 1:10000 dilution. 293 cells were transfected with (1) wild-type SAMHD1 or (2) SAMHD1 (mutation T592A).

Biorbyt Ltd.

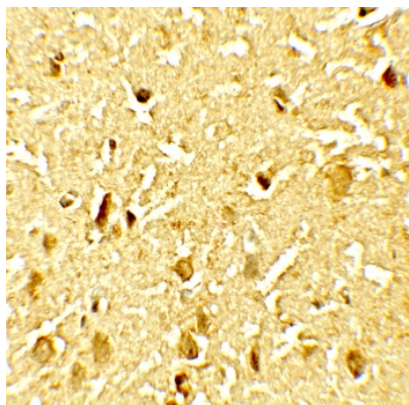
7 Signet Court, Swann Road
Cambridge
CB5 8LA
United Kingdom

Email: info@biorbyt.com, support@biorbyt.com
Phone: +44 (0)1223 859353 | Fax: +1 (415) 651-8558

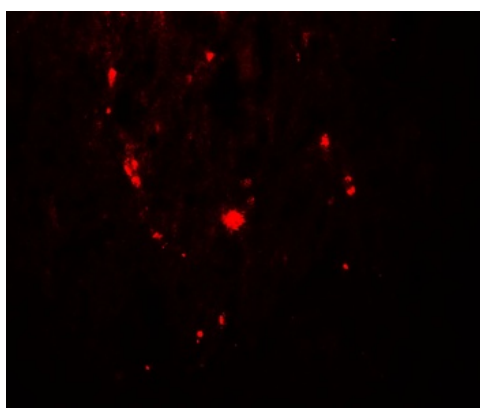
Biorbyt LLC

68 TW Alexander Drive
Research Triangle Park
Durham
NC 27713
United States

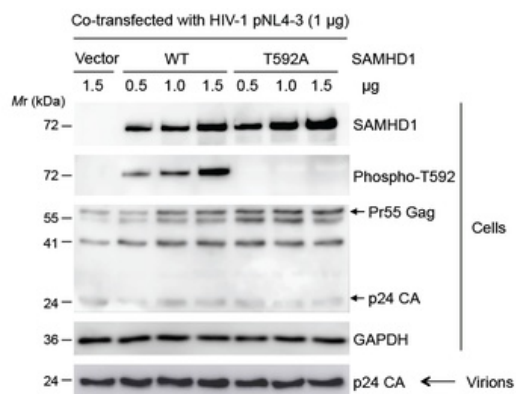
Email: info@biorbyt.com, support@biorbyt.com
Phone: +1 (415) 906-5211 | Fax: +1 (415) 651-8558



Immunohistochemistry Validation of SAMHD1 (phospho Thr592) in Human Brain Tissue. Immunohistochemical analysis of paraffin-embedded Human Brain Tissue using anti-SAMHD1 (phospho Thr592) antibody (orb1239966) at 2.5 µg/ml. Tissue was fixed with formaldehyde and blocked with 10% serum for 1 h at RT; antigen retrieval was by heat mediation with a citrate buffer (pH6). Samples were incubated with primary antibody overnight at 4 °C. A goat anti-rabbit IgG H&L (HRP) at 1/250 was used as secondary. Counter stained with Hematoxylin.



Immunofluorescence Validation of SAMHD1 (phospho Thr592) in Human Brain Tissue. Immunofluorescent analysis of 4% paraformaldehyde-fixed Human Brain Tissue labeling phospho SAMHD1 (phospho Thr592) with orb1239966 at 20 µg/mL, followed by goat anti-rabbit IgG secondary antibody at 1/500 dilution (red).



Mutant Validation of SAMHD1 (phospho Thr592) in human embryonic kidney (HEK) 293T cells (Antonucci et al., 2016). WB analysis showed protein expression level of SAMHD1 (phospho Thr592) detected by anti-SAMHD1 (phospho Thr592) antibody (orb1239966). SAMHD1 (phospho Thr592) expression was detected only in SAMHD1 WT, but neither in SAMHD1 T592A mutant nor the control group (empty vector).

Biorbyt Ltd.

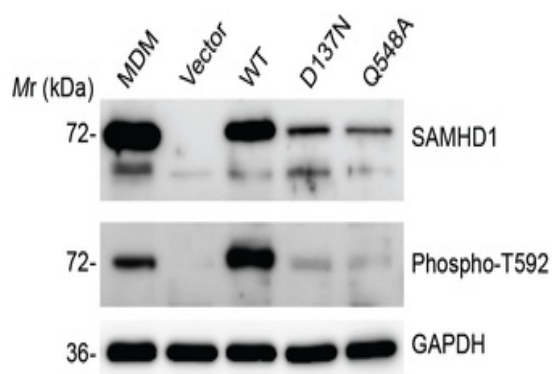
7 Signet Court, Swann Road
Cambridge
CB5 8LA
United Kingdom

Email: info@biorbyt.com, support@biorbyt.com
Phone: +44 (0)1223 859353 | Fax: +1 (415) 651-8558

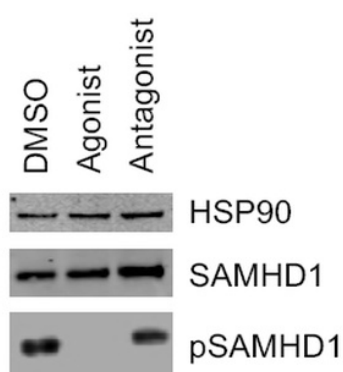
Biorbyt LLC

68 TW Alexander Drive
Research Triangle Park
Durham
NC 27713
United States

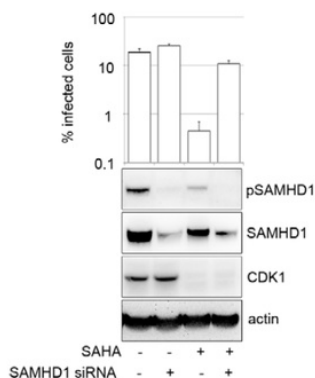
Email: info@biorbyt.com, support@biorbyt.com
Phone: +1 (415) 906-5211 | Fax: +1 (415) 651-8558



Mutant Validation of SAMHD1 (phospho Thr592) in primary monocyte-derived macrophages (MDM) from a healthy donor and human monocytic U937 cells (Antonucci et al., 2016). The expression levels of SAMHD1 (phospho Thr592) detected by anti-SAMHD1 (phospho Thr592) antibody (orb1239966) in SAMHD1 mutants (D137N & Q548A) of U937 cells are lower than those of SAMHD1 WT or MDM.



Western Blot Validation of SAMHD1 (phospho Thr592) in herpes simplex viruses (HSV-1) infected human macrophages (Kueck et al., 2018). HSV-1 infected macrophages were treated with aryl hydrocarbon receptor (AhR) agonist or antagonist. WB analysis showed protein expression level of SAMHD1 (phospho Thr592) detected by anti-SAMHD1 (phospho Thr592) antibody (orb1239966). AhR agonist repressed SAMHD1 (phospho Thr592) expression as compared to the control group or AhR antagonist. Representative of 2 different donors.



KD Validation of SAMHD1 (phospho Thr592) in human Macrophages (Mlcochova et al., 2017). SAMHD1 (phospho Thr592) signal detected by anti-SAMHD1 (phospho Thr592) antibody (orb1239966) in SAMHD1 knockdown cells were disrupted as compared to control.

Biorbyt Ltd.

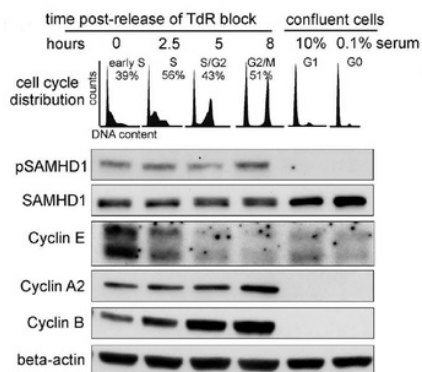
7 Signet Court, Swann Road
Cambridge
CB5 8LA
United Kingdom

Email: info@biorbyt.com, support@biorbyt.com
Phone: +44 (0)1223 859353 | Fax: +1 (415) 651-8558

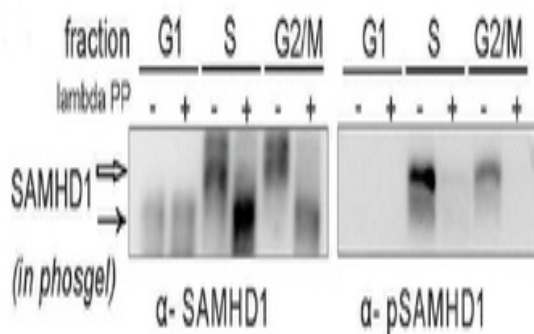
Biorbyt LLC

68 TW Alexander Drive
Research Triangle Park
Durham
NC 27713
United States

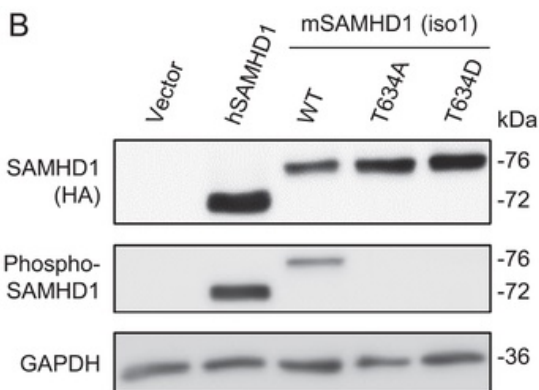
Email: info@biorbyt.com, support@biorbyt.com
Phone: +1 (415) 906-5211 | Fax: +1 (415) 651-8558



Western Blot Validation of SAMHD1 (phospho Thr592) in normal human fibroblasts (Tramentozzi et al., 2018). WB analysis showed protein expression level of SAMHD1 (phospho Thr592) detected by anti-SAMHD1 (phospho Thr592) antibody (orb1239966). SAMHD1 (phospho Thr592) expression was detected in S and G2/M phase of cell cycle but not in G1 phase.



Regulated Expression Validation of SAMHD1 (phospho Thr592) in parental THP-1 cells (Tramentozzi et al., 2018). WB analysis showed protein expression level of SAMHD1 (phospho Thr592) detected by anti-SAMHD1 (phospho Thr592) antibody (orb1239966). SAMHD1 (phospho Thr592) expression was significantly decreased in S and G2/M phase with the treatment of lambda-phosphatase.



Western Blot Validation of SAMHD1 (phospho Thr592) in Mouse SAMHD1 Transfected Cells (Wang et al., 2016). WB analysis showed protein expression level of SAMHD1 (phospho Thr592) detected by anti-SAMHD1 (phospho Thr592) antibody (orb1239966). Mouse SAMHD1 was detected in transfected cells with WT mSAMHD1, but not with mutants.

Biorbyt Ltd.

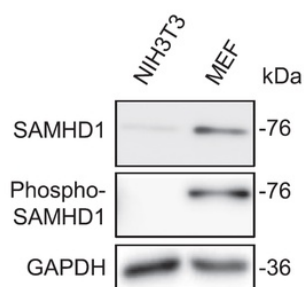
7 Signet Court, Swann Road
Cambridge
CB5 8LA
United Kingdom

Email: info@biorbyt.com, support@biorbyt.com
Phone: +44 (0)1223 859353 | Fax: +1 (415) 651-8558

Biorbyt LLC

68 TW Alexander Drive
Research Triangle Park
Durham
NC 27713
United States

Email: info@biorbyt.com, support@biorbyt.com
Phone: +1 (415) 906-5211 | Fax: +1 (415) 651-8558

C

Western Blot Validation of SAMHD1 (phospho Thr592) in Mouse Cells (Wang et al., 2016). WB analysis showed protein expression level of SAMHD1 (phospho Thr592) detected by anti-SAMHD1 (phospho Thr592) antibody (orb1239966). Mouse SAMHD1 was detected mouse MEF cells.

Biorbyt Ltd.

7 Signet Court, Swann Road
Cambridge
CB5 8LA
United Kingdom

Email: info@biorbyt.com, support@biorbyt.com

Phone: [+44 \(0\)1223 859353](tel:+44(0)1223859353) | Fax: [+1 \(415\) 651-8558](tel:+1(415)651-8558)

Biorbyt LLC

68 TW Alexander Drive
Research Triangle Park
Durham
NC 27713
United States

Email: info@biorbyt.com, support@biorbyt.com

Phone: [+1 \(415\) 906-5211](tel:+1(415)906-5211) | Fax: [+1 \(415\) 651-8558](tel:+1(415)651-8558)