

Product Datasheet

PDCD1LG2 Antibody (orb1239853)

Catalog Number	orb1239853
Category	Antibodies
Description	PDCD1LG2 Antibody
Target	PDCD1LG2
Clonality	Monoclonal
Species/Host	Mouse
Isotype	IgG1
Conjugation	Unconjugated
Reactivity	Human
Form/Appearance	Liquid
Concentration	1 mg/mL
Buffer/Preservatives	PD-L2 Antibody is supplied in PBS containing 0.02% sodium azide and 50% glycerol.
Purification	PD-L2 Antibody is supplied as protein A purified IgG1.
Immunogen	PD-L2 antibody was raised against the extracellular domain of human PD-L2.
UniProt ID	P9BQ51
MW	Predicted: 30 kDa Observed: 38 kDa
Tested applications	ELISA, FC, ICC, IF, IHC-P, WB

Biorbyt Ltd.

7 Signet Court, Swann Road
Cambridge
CB5 8LA
United Kingdom

Email: info@biorbyt.com, support@biorbyt.com

Phone: [+44 \(0\)1223 859353](tel:+44(0)1223859353) | Fax: [+1 \(415\) 651-8558](tel:+1(415)651-8558)

Biorbyt LLC

68 TW Alexander Drive
Research Triangle Park
Durham
NC 27713-2847
United States

Email: info@biorbyt.com, support@biorbyt.com

Phone: [+1 \(415\) 906-5211](tel:+1(415)906-5211) | Fax: [+1 \(415\) 651-8558](tel:+1(415)651-8558)

Application notes

PD-L2 antibody can be used for detection of PD-L2 by Western blot at 0.5 - 1 µg/mL. Antibody can also be used for immunohistochemistry starting at 2 µg/mL. For immunofluorescence start at 20 µg/mL. Antibody validated: Western Blot in human samples; Immunohistochemistry in human samples; Immunocytochemistry in human samples; Immunofluorescence in human samples and Flow Cytometry in mouse samples. All other applications and species not yet tested.

Antibody Type

Primary Antibody

Clone Number

[4E10]

Modifications

None

Storage

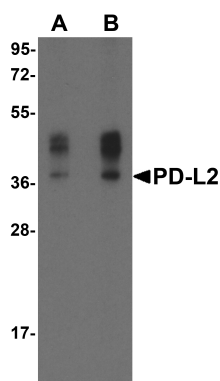
Maintain refrigerated at 2-8°C for up to 2 weeks. For long term storage store at -20°C in small aliquots to prevent freeze-thaw cycles.

Note

For research use only

NCBI**NP_079515****Expiration Date**

12 months from date of receipt.



Western blot analysis of PD-L2 in overexpressing HEK293 cells PD-L2 antibody at 0.5 and 1 µg/ml

Biorbyt Ltd.

7 Signet Court, Swann Road
Cambridge
CB5 8LA
United Kingdom

Email: info@biorbyt.com, support@biorbyt.com

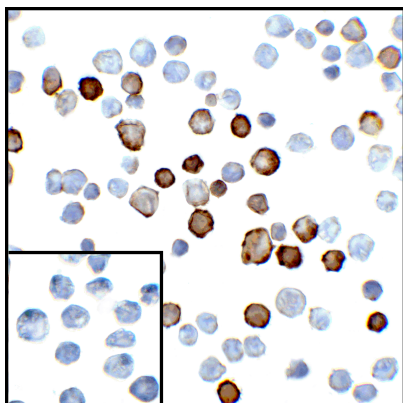
Phone: [+44 \(0\)1223 859353](tel:+44(0)1223859353) | Fax: [+1 \(415\) 651-8558](tel:+1(415)651-8558)

Biorbyt LLC

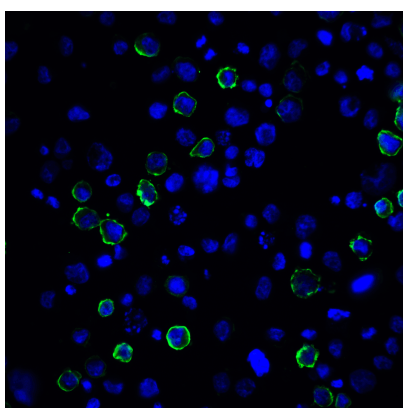
68 TW Alexander Drive
Research Triangle Park
Durham
NC 27713-2847
United States

Email: info@biorbyt.com, support@biorbyt.com

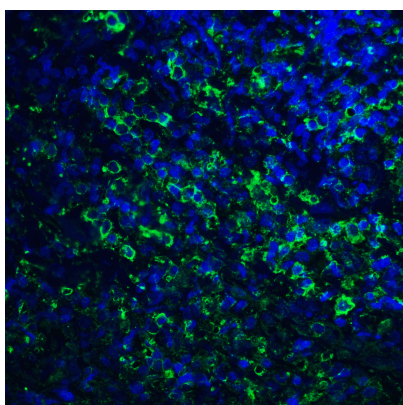
Phone: [+1 \(415\) 906-5211](tel:+1(415)906-5211) | Fax: [+1 \(415\) 651-8558](tel:+1(415)651-8558)



Immunocytochemistry of PD-L2 in transfected HEK293 cells with PD-L2 antibody at 5 µg/mL. Lower left: Immunocytochemistry in transfected HEK293 cells with control mouse IgG antibody at 5 µg/mL.



Immunofluorescence of PD-L2 in transfected HEK293 cells with PD-L2 antibody at 20 µg/mL. Green: PDL2 Antibody [4E10] (orb1239853) Blue: DAPI staining



Immunofluorescence of PD-L2 in human tonsil tissue with PD-L2 antibody at 20 µg/mL. Green: PDL2 Antibody [4E10] (orb1239853) Blue: DAPI staining

Biorbyt Ltd.

7 Signet Court, Swann Road
Cambridge
CB5 8LA
United Kingdom

Email: info@biorbyt.com, support@biorbyt.com

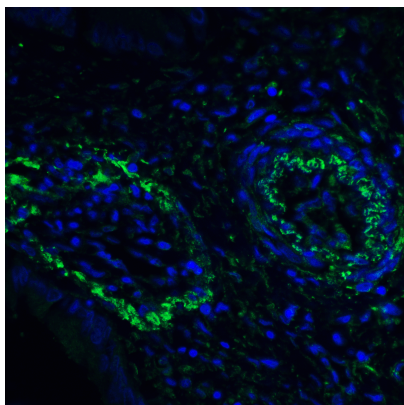
Phone: +44 (0)1223 859353 | Fax: +1 (415) 651-8558

Biorbyt LLC

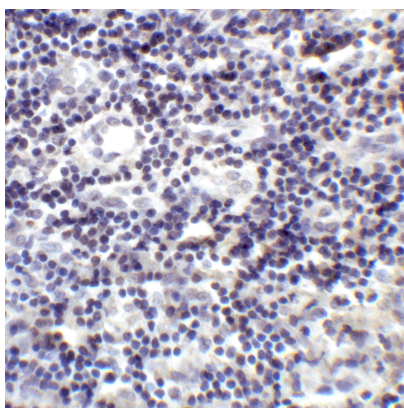
68 TW Alexander Drive
Research Triangle Park
Durham
NC 27713-2847
United States

Email: info@biorbyt.com, support@biorbyt.com

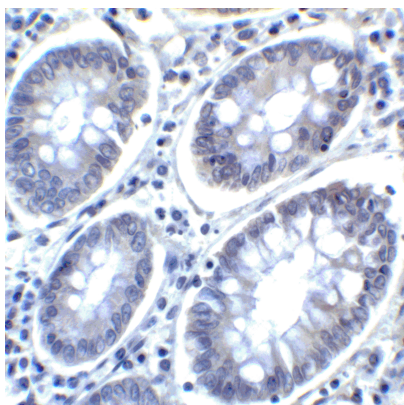
Phone: +1 (415) 906-5211 | Fax: +1 (415) 651-8558



Immunofluorescence of PD-L2 in human colon carcinoma tissue with PD-L2 antibody at 20 $\mu\text{g}/\text{mL}$. Green: PDL2 Antibody [4E10] (orb1239853) Blue: DAPI staining



Immunohistochemistry of PD-L2 in human tonsil tissue with PD-L2 antibody at 2 $\mu\text{g}/\text{mL}$.



Immunohistochemistry of PD-L2 in human colon carcinoma tissue with PD-L2 antibody at 2 $\mu\text{g}/\text{mL}$.

Biorbyt Ltd.

7 Signet Court, Swann Road
Cambridge
CB5 8LA
United Kingdom

Email: info@biorbyt.com, support@biorbyt.com

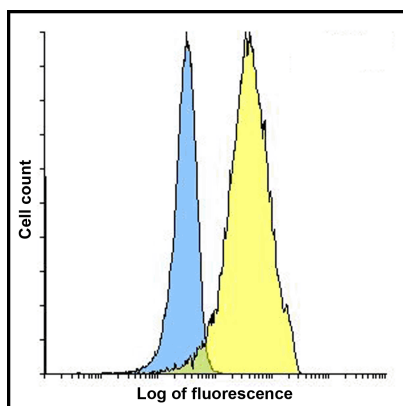
Phone: [+44 \(0\)1223 859353](tel:+44(0)1223859353) | Fax: [+1 \(415\) 651-8558](tel:+1(415)651-8558)

Biorbyt LLC

68 TW Alexander Drive
Research Triangle Park
Durham
NC 27713-2847
United States

Email: info@biorbyt.com, support@biorbyt.com

Phone: [+1 \(415\) 906-5211](tel:+1(415)906-5211) | Fax: [+1 \(415\) 651-8558](tel:+1(415)651-8558)



Flow cytometry analysis of PD-L2 overexpressing HEK293 cells using PD-L2 antibody and control mouse IgG antibody at 10 $\mu\text{g/ml}$. Blue: Untransfected HEK293 cells. Yellow: PD-L2 overexpressing HEK293 cells.

Biorbyt Ltd.

7 Signet Court, Swann Road
Cambridge
CB5 8LA
United Kingdom

Email: info@biorbyt.com, support@biorbyt.com

Phone: [+44 \(0\)1223 859353](tel:+44(0)1223859353) | Fax: [+1 \(415\) 651-8558](tel:+1(415)651-8558)

Biorbyt LLC

68 TW Alexander Drive
Research Triangle Park
Durham
NC 27713-2847
United States

Email: info@biorbyt.com, support@biorbyt.com

Phone: [+1 \(415\) 906-5211](tel:+1(415)906-5211) | Fax: [+1 \(415\) 651-8558](tel:+1(415)651-8558)