

Product Datasheet

GLE1 Antibody (orb1239750)

Catalog Number	orb1239750
Category	Antibodies
Description	GLE1 Antibody
Target	GLE1
Clonality	Polyclonal
Species/Host	Rabbit
Isotype	IgG
Conjugation	Unconjugated
Reactivity	Human, Mouse, Rat
Predicted Reactivity	Bovine
Form/Appearance	Liquid
Concentration	1 mg/mL
Buffer/Preservatives	Gle1 Antibody is supplied in PBS containing 0.02% sodium azide.
Purification	Gle1 Antibody is affinity chromatography purified via peptide column.
Immunogen	Gle1 antibody was raised against a 14 amino acid synthetic peptide near the center of human Gle1. The immunogen is located within amino acids 390 - 440 of Gle1.
UniProt ID	Q53GS7
Tested applications	ELISA, IF, IHC-P, WB

Biorbyt Ltd.

7 Signet Court, Swann Road
Cambridge
CB5 8LA
United Kingdom

Email: info@biorbyt.com, support@biorbyt.com

Phone: [+44 \(0\)1223 859353](tel:+44(0)1223859353) | Fax: [+1 \(415\) 651-8558](tel:+1(415)651-8558)

Biorbyt LLC

68 TW Alexander Drive
Research Triangle Park
Durham
NC 27713
United States

Email: info@biorbyt.com, support@biorbyt.com

Phone: [+1 \(415\) 906-5211](tel:+1(415)906-5211) | Fax: [+1 \(415\) 651-8558](tel:+1(415)651-8558)

Application notes

Gle1 antibody can be used for detection of Gle1 by Western blot at 1 - 2 $\mu\text{g}/\text{mL}$. Antibody can also be used for immunohistochemistry starting at 2.5 $\mu\text{g}/\text{mL}$. For immunofluorescence start at 20 $\mu\text{g}/\text{mL}$. Antibody validated: Western Blot in human samples; Immunohistochemistry in mouse samples and Immunofluorescence in mouse samples. All other applications and species not yet tested.

Antibody Type

Primary Antibody

Modifications

None

Storage

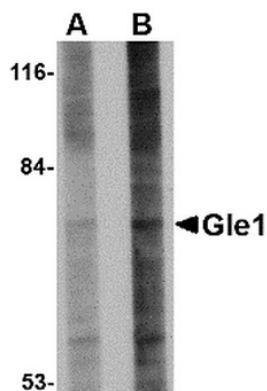
Maintain refrigerated at 2-8°C for up to 2 weeks. For long term storage store at -20°C in small aliquots to prevent freeze-thaw cycles.

Note

For research use only

NCBI[NP_001003722](#)**Expiration Date**

12 months from date of receipt.



Western blot analysis of Gle1 in 293 cell lysate with Gle1 antibody at (A) 1 and (B) 2 $\mu\text{g}/\text{mL}$.

Biorbyt Ltd.

7 Signet Court, Swann Road
Cambridge
CB5 8LA
United Kingdom

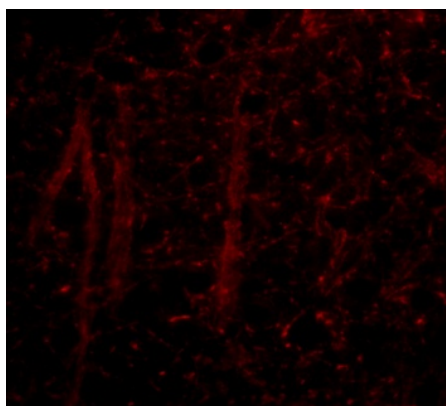
Email: info@biorbyt.com, support@biorbyt.comPhone: [+44 \(0\)1223 859353](tel:+44(0)1223859353) | Fax: [+1 \(415\) 651-8558](tel:+1(415)651-8558)**Biorbyt LLC**

68 TW Alexander Drive
Research Triangle Park
Durham
NC 27713
United States

Email: info@biorbyt.com, support@biorbyt.comPhone: [+1 \(415\) 906-5211](tel:+1(415)906-5211) | Fax: [+1 \(415\) 651-8558](tel:+1(415)651-8558)



Immunohistochemistry of Gle1 in mouse brain tissue with Gle1 antibody at 2.5 µg/mL.



Immunofluorescence of gle1 in mouse brain tissue with gle1 antibody at 20 µg/mL.

Biorbyt Ltd.

7 Signet Court, Swann Road
Cambridge
CB5 8LA
United Kingdom

Email: info@biorbyt.com, support@biorbyt.com

Phone: [+44 \(0\)1223 859353](tel:+44(0)1223859353) | Fax: [+1 \(415\) 651-8558](tel:+1(415)651-8558)

Biorbyt LLC

68 TW Alexander Drive
Research Triangle Park
Durham
NC 27713
United States

Email: info@biorbyt.com, support@biorbyt.com

Phone: [+1 \(415\) 906-5211](tel:+1(415)906-5211) | Fax: [+1 \(415\) 651-8558](tel:+1(415)651-8558)