

Product Datasheet

LAG3 Antibody (orb1239547)

Catalog Number	orb1239547
Category	Antibodies
Description	LAG3 Antibody
Target	LAG3
Clonality	Monoclonal
Species/Host	Mouse
Isotype	IgG1,k
Conjugation	Unconjugated
Reactivity	Human
Form/Appearance	Liquid
Concentration	1 mg/mL
Buffer/Preservatives	LAG-3 Antibody is supplied in PBS containing 0.02% sodium azide and 50% glycerol.
Purification	LAG-3 Antibody is supplied as protein A purified IgG1.
Immunogen	LAG-3 antibody was raised against the extracellular domain of human LAG-3
UniProt ID	P18627
MW	Predicted: 55 kDa Observed: 60, 70, 80 kDa
Tested applications	ELISA, FC, ICC, IF, IHC-P, WB

Biorbyt Ltd.

7 Signet Court, Swann Road
Cambridge
CB5 8LA
United Kingdom

Email: info@biorbyt.com, support@biorbyt.com

Phone: [+44 \(0\)1223 859353](tel:+44(0)1223859353) | Fax: [+1 \(415\) 651-8558](tel:+1(415)651-8558)

Biorbyt LLC

68 TW Alexander Drive
Research Triangle Park
Durham
NC 27713
United States

Email: info@biorbyt.com, support@biorbyt.com

Phone: [+1 \(415\) 906-5211](tel:+1(415)906-5211) | Fax: [+1 \(415\) 651-8558](tel:+1(415)651-8558)

Application notes

LAG-3 antibody can be used for ELISA starting at 0.25 µg/mL. For Western blot start at 0.25 µg/mL. For Immunocytochemistry start at 1 µg/mL. For Immunofluorescence start at 10 µg/mL. For Immunohistochemistry start at 5 µg/mL. For Flow Cytometry start at 1 µg/ml. Antibody validated: Western Blot in human samples; Immunohistochemistry in human samples; Immunocytochemistry in human samples; Immunofluorescence in human samples and Flow Cytometry in human samples. All other applications and species not yet tested.

Antibody Type

Primary Antibody

Clone Number

2G8

Modifications

None

Storage

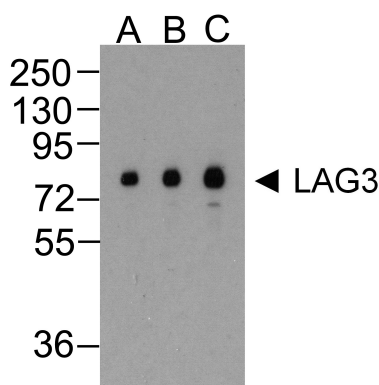
Maintain refrigerated at 2-8°C for up to 2 weeks. For long term storage store at -20°C in small aliquots to prevent freeze-thaw cycles.

Note

For research use only

NCBI[NP_002277](#)**Expiration Date**

12 months from date of receipt.



Western blot analysis of LAG-3 in over-expressing HEK293 cells using LAG-3 antibody at (A) 0.25 (B) 0.5 and (C) 1 µg/ml.

Biorbyt Ltd.

7 Signet Court, Swann Road
Cambridge
CB5 8LA
United Kingdom

Email: info@biorbyt.com, support@biorbyt.com

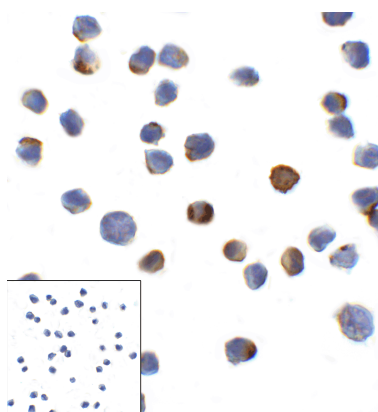
Phone: +44 (0)1223 859353 | Fax: +1 (415) 651-8558

Biorbyt LLC

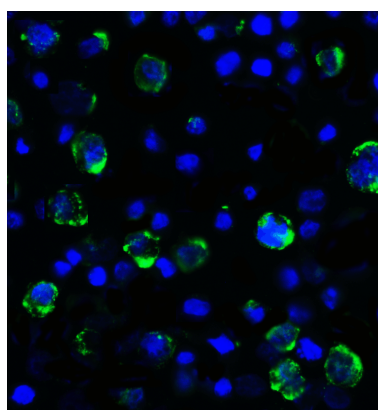
68 TW Alexander Drive
Research Triangle Park
Durham
NC 27713
United States

Email: info@biorbyt.com, support@biorbyt.com

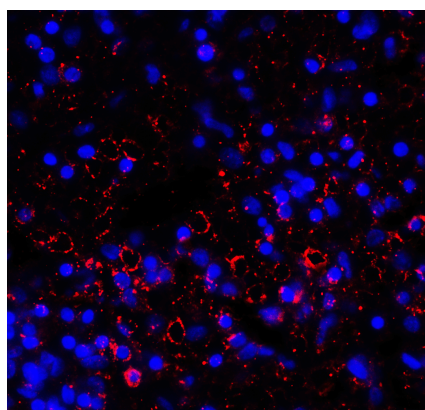
Phone: +1 (415) 906-5211 | Fax: +1 (415) 651-8558



Immunocytochemistry of LAG-3 in over expressing HEK293 cells using LAG-3 antibody and control mouse IgG antibody (left corner box) at 1 µg/ml.



Immunofluorescence of LAG-3 in over expressing HEK293 cells using LAG-3 Antibody at 2 µg/ml. Green: LAG3 Antibody [2G8] (orb1239547) Blue: DAPI staining



Immunofluorescence of LAG-3 in over human spleen tissue using LAG-3 Antibody at 10 µg/ml. Red: LAG3 Antibody [2G8] (orb1239547) Blue: DAPI staining

Biorbyt Ltd.

7 Signet Court, Swann Road
Cambridge
CB5 8LA
United Kingdom

Email: info@biorbyt.com, support@biorbyt.com

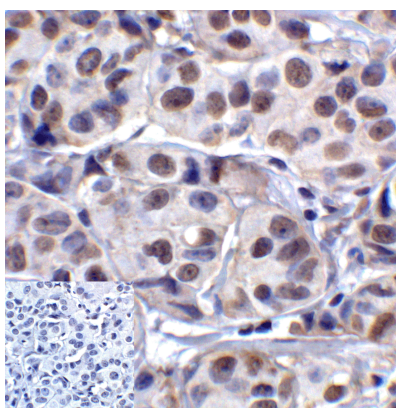
Phone: [+44 \(0\)1223 859353](tel:+44(0)1223859353) | Fax: [+1 \(415\) 651-8558](tel:+1(415)651-8558)

Biorbyt LLC

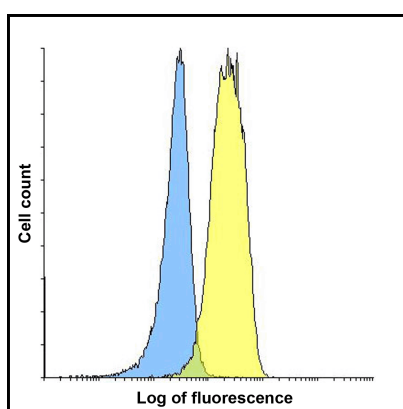
68 TW Alexander Drive
Research Triangle Park
Durham
NC 27713
United States

Email: info@biorbyt.com, support@biorbyt.com

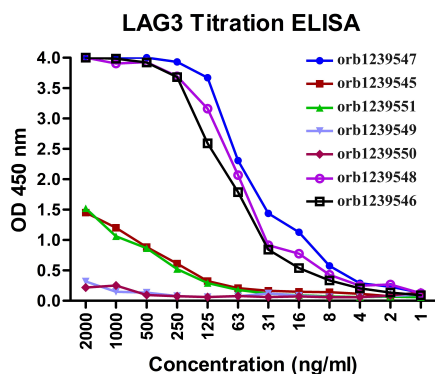
Phone: [+1 \(415\) 906-5211](tel:+1(415)906-5211) | Fax: [+1 \(415\) 651-8558](tel:+1(415)651-8558)



Immunohistochemistry of LAG-3 in human lymphoma tissue using LAG-3 Antibody and control mouse IgG (corner box) at 5 µg/ml.



Flow cytometry analysis of LAG-3 over expressing HEK293 cells using LAG-3 antibody at 1 µg/ml. Blue: untransfected HEK293 cells. Yellow: LAG-3 over expressing HEK293 cells.



Titration curve analysis of LAG-3 mAbs to detect recombinant LAG-3 in ELISA with orb1239547, orb1239545, orb1239551, orb1239549, orb1239550, orb1239548, and orb1239546 antibodies at decreasing concentrations.

Biorbyt Ltd.

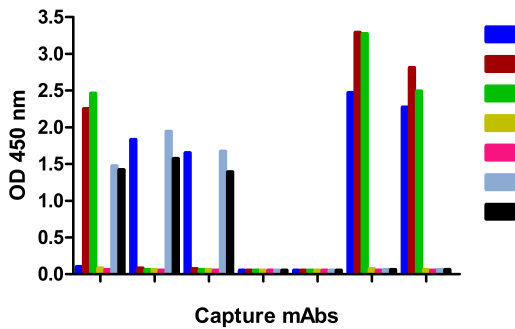
7 Signet Court, Swann Road
Cambridge
CB5 8LA
United Kingdom

Email: info@biorbyt.com, support@biorbyt.com
Phone: +44 (0)1223 859353 | Fax: +1 (415) 651-8558

Biorbyt LLC

68 TW Alexander Drive
Research Triangle Park
Durham
NC 27713
United States

Email: info@biorbyt.com, support@biorbyt.com
Phone: +1 (415) 906-5211 | Fax: +1 (415) 651-8558

LAG3 Capture ELISA

A sandwich ELISA was performed using the anti-LAG3 mAbs orb1239547, orb1239545, orb1239551, orb1239549, orb1239550 and orb1239548 as the capture antibodies for the LAG3 extracellular domain antigen with biotin-labeled Risk-Free anti-LAG3 mAbs as the detection antibodies.

Biorbyt Ltd.

7 Signet Court, Swann Road
Cambridge
CB5 8LA
United Kingdom

Email: info@biorbyt.com, support@biorbyt.com

Phone: [+44 \(0\)1223 859353](tel:+44(0)1223859353) | Fax: [+1 \(415\) 651-8558](tel:+1(415)6518558)

Biorbyt LLC

68 TW Alexander Drive
Research Triangle Park
Durham
NC 27713
United States

Email: info@biorbyt.com, support@biorbyt.com

Phone: [+1 \(415\) 906-5211](tel:+1(415)9065211) | Fax: [+1 \(415\) 651-8558](tel:+1(415)6518558)