

Product Datasheet

MAP1LC3C Antibody (orb1239473)

| | |
|-----------------------------|---|
| Catalog Number | orb1239473 |
| Category | Antibodies |
| Description | MAP1LC3C Antibody |
| Target | MAP1LC3C |
| Clonality | Polyclonal |
| Species/Host | Rabbit |
| Isotype | IgG |
| Conjugation | Unconjugated |
| Reactivity | Human |
| Form/Appearance | Liquid |
| Concentration | 1 mg/mL |
| Buffer/Preservatives | MAP1LC3C antibody is supplied in PBS containing 0.02% sodium azide. |
| Purification | MAP1LC3C antibody is affinity chromatography purified via peptide column. |
| Immunogen | MAP1LC3C antibody was raised against an 18 amino acid peptide near the carboxy terminus of human MAP1LC3C. The immunogen is located within the last 50 amino acids of MAP1LC3C. |
| UniProt ID | Q9BXW4 |
| MW | Predicted: 16 kDa Observed: 16 kDa |
| Tested applications | ELISA, IF, IHC-P, WB |

Biorbyt Ltd.

7 Signet Court, Swann Road
Cambridge
CB5 8LA
United Kingdom

Email: info@biorbyt.com, support@biorbyt.com
Phone: [+44 \(0\)1223 859353](tel:+44(0)1223859353) | Fax: [+1 \(415\) 651-8558](tel:+1(415)651-8558)

Biorbyt LLC

68 TW Alexander Drive
Research Triangle Park
Durham
NC 27713
United States

Email: info@biorbyt.com, support@biorbyt.com
Phone: [+1 \(415\) 906-5211](tel:+1(415)906-5211) | Fax: [+1 \(415\) 651-8558](tel:+1(415)651-8558)

Application notes

MAP1LC3C antibody can be used for detection of MAP1LC3C by Western blot at 1 - 2 µg/ml. Antibody can also be used for Immunohistochemistry starting at 5 µg/mL. For immunofluorescence start at 20 µg/mL. Antibody validated: Western Blot in human samples; Immunohistochemistry in human samples and Immunofluorescence in human samples. All other applications and species not yet tested.

Specificity

MAP1LC3C antibody is human, mouse and rat reactive. Multiple isoforms MAP1LC3C are known to exist. MAP1LC3C antibody is predicted to not cross-react with MAP1LC3A or MAP1LC3B.

Antibody Type

Primary Antibody

Modifications

None

Storage

Maintain refrigerated at 2-8°C for up to 2 weeks. For long term storage store at -20°C in small aliquots to prevent freeze-thaw cycles.

Note

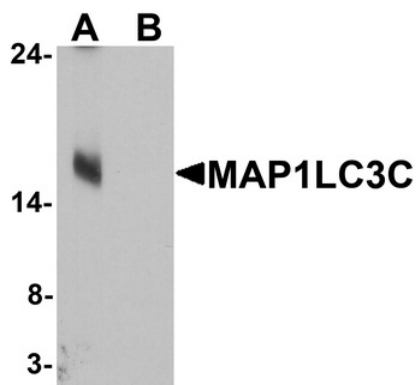
For research use only

NCBI

[NP_001004343](#)

Expiration Date

12 months from date of receipt.



Western blot analysis of MAP1LC3C in human brain tissue lysate with MAP1LC3C antibody at 1 µg/ml in (A) the absence and (B) the presence of blocking peptide.

Biorbyt Ltd.

7 Signet Court, Swann Road
Cambridge
CB5 8LA
United Kingdom

Email: info@biorbyt.com, support@biorbyt.com

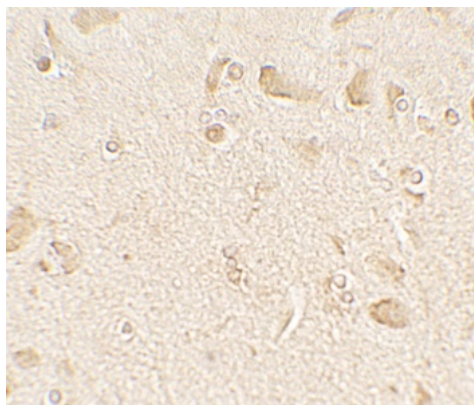
Phone: +44 (0)1223 859353 | Fax: +1 (415) 651-8558

Biorbyt LLC

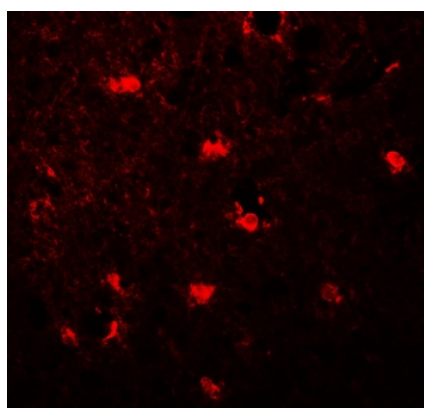
68 TW Alexander Drive
Research Triangle Park
Durham
NC 27713
United States

Email: info@biorbyt.com, support@biorbyt.com

Phone: +1 (415) 906-5211 | Fax: +1 (415) 651-8558



Immunohistochemistry of MAP1LC3C in human brain tissue with MAP1LC3C antibody at 5 µg/mL.



Immunofluorescence of MAP1LC3C in human brain tissue with MAP1LC3C antibody at 20 µg/mL.

Biorbyt Ltd.

7 Signet Court, Swann Road
Cambridge
CB5 8LA
United Kingdom

Email: info@biorbyt.com, support@biorbyt.com

Phone: [+44 \(0\)1223 859353](tel:+44(0)1223859353) | Fax: [+1 \(415\) 651-8558](tel:+1(415)651-8558)

Biorbyt LLC

68 TW Alexander Drive
Research Triangle Park
Durham
NC 27713
United States

Email: info@biorbyt.com, support@biorbyt.com

Phone: [+1 \(415\) 906-5211](tel:+1(415)906-5211) | Fax: [+1 \(415\) 651-8558](tel:+1(415)651-8558)