

Product Datasheet

GLS2 Antibody (orb1239416)

Catalog Number	orb1239416
Category	Antibodies
Description	GLS2 Antibody
Target	GLS2
Clonality	Polyclonal
Species/Host	Rabbit
Isotype	IgG
Conjugation	Unconjugated
Reactivity	Human, Mouse, Rat
Form/Appearance	Liquid
Concentration	1 mg/mL
Buffer/Preservatives	GLS2 Antibody is supplied in PBS containing 0.02% sodium azide.
Purification	GLS2 Antibody is affinity chromatography purified via peptide column.
Immunogen	GLS2 antibody was raised against an 18 amino acid synthetic peptide near the center terminus of human GLS2. The immunogen is located within amino acids 300 - 350 of GLS2.
UniProt ID	Q9UI32
MW	Predicted: 36, 55, 62, 66 kDa Observed: 55, 62 kDa
Tested applications	ELISA, IF, IHC-P, WB

Biorbyt Ltd.

7 Signet Court, Swann Road
Cambridge
CB5 8LA
United Kingdom

Email: info@biorbyt.com, support@biorbyt.com

Phone: [+44 \(0\)1223 859353](tel:+44(0)1223859353) | Fax: [+1 \(415\) 651-8558](tel:+1(415)651-8558)

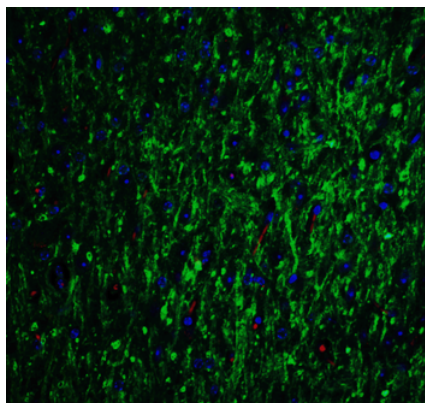
Biorbyt LLC

68 TW Alexander Drive
Research Triangle Park
Durham
NC 27713
United States

Email: info@biorbyt.com, support@biorbyt.com

Phone: [+1 \(415\) 906-5211](tel:+1(415)906-5211) | Fax: [+1 \(415\) 651-8558](tel:+1(415)651-8558)

Application notes	GLS2 antibody can be used for detection of GLS2 by Western blot at 0.5 - 1 µg/mL. Antibody can also be used for immunohistochemistry starting at 5 µg/mL. For immunofluorescence start at 20 µg/mL. Antibody validated: Western Blot in rat samples; Immunohistochemistry in mouse and rat samples and Immunofluorescence in mouse and rat samples. All other applications and species not yet tested.
Specificity	Multiple isoforms of GLS2 are known to exist.
Antibody Type	Primary Antibody
Modifications	None
Storage	Maintain refrigerated at 2-8°C for up to 2 weeks. For long term storage store at -20°C in small aliquots to prevent freeze-thaw cycles.
Note	For research use only
NCBI	NP_037399
Expiration Date	12 months from date of receipt.



Immunofluorescence Validation of GLS2 in Mouse Brain. Immunofluorescent analysis of 4% paraformaldehyde-fixed mouse brain labeling GLS2 with orb1239416 at 20 µg g/mL, followed by goat anti-rabbit IgG secondary antibody at 1/500 dilution (green) and DAPI antibody (blue).

Biorbyt Ltd.

7 Signet Court, Swann Road
Cambridge
CB5 8LA
United Kingdom

Email: info@biorbyt.com, support@biorbyt.com

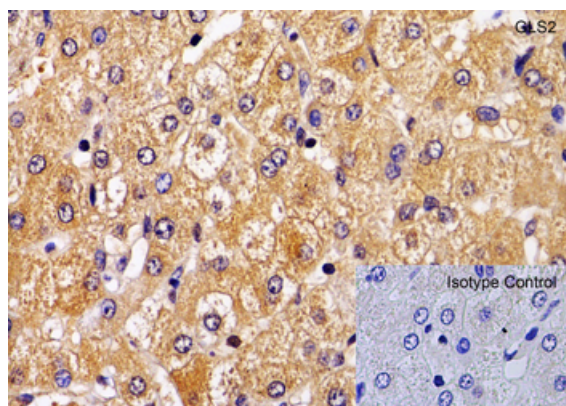
Phone: [+44 \(0\)1223 859353](tel:+44(0)1223859353) | Fax: [+1 \(415\) 651-8558](tel:+1(415)651-8558)

Biorbyt LLC

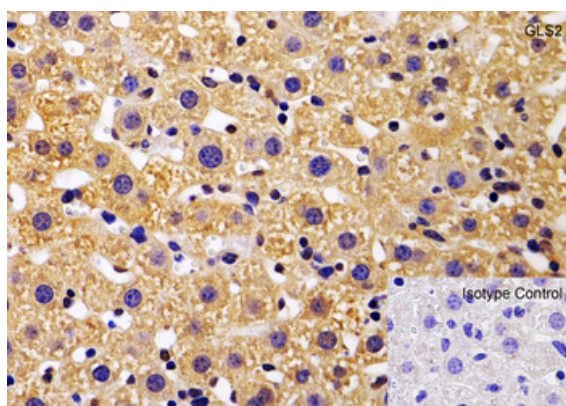
68 TW Alexander Drive
Research Triangle Park
Durham
NC 27713
United States

Email: info@biorbyt.com, support@biorbyt.com

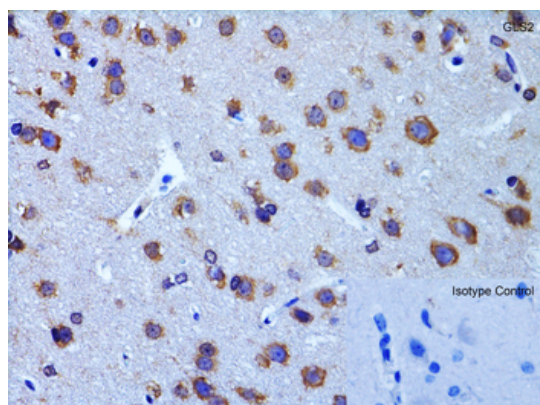
Phone: [+1 \(415\) 906-5211](tel:+1(415)906-5211) | Fax: [+1 \(415\) 651-8558](tel:+1(415)651-8558)



Immunohistochemistry Validation of GLS2 in Human Liver. Immunohistochemical analysis of paraffin-embedded human liver tissue using anti-GLS2 antibody (orb1239416) at 1 µg/mL. Tissue was fixed with formaldehyde and blocked with 10% serum for 1 h at RT; antigen retrieval was by heat mediation with a citrate buffer (pH6). Samples were incubated with primary antibody overnight at 4°C. A goat anti-rabbit IgG H&L (HRP) at 1/250 was used as secondary. Counter stained with Hematoxylin.



Immunohistochemistry Validation of GLS2 in Mouse Liver. Immunohistochemical analysis of paraffin-embedded mouse liver tissue using anti-GLS2 antibody (orb1239416) at 1 µg/mL. Tissue was fixed with formaldehyde and blocked with 10% serum for 1 h at RT; antigen retrieval was by heat mediation with a citrate buffer (pH6). Samples were incubated with primary antibody overnight at 4°C. A goat anti-rabbit IgG H&L (HRP) at 1/250 was used as secondary. Counter stained with Hematoxylin.



Immunohistochemistry Validation of GLS2 in Rat Brain. Immunohistochemical analysis of paraffin-embedded rat brain tissue using anti-GLS2 antibody (orb1239416) at 2 µg/mL. Tissue was fixed with formaldehyde and blocked with 10% serum for 1 h at RT; antigen retrieval was by heat mediation with a citrate buffer (pH6). Samples were incubated with primary antibody overnight at 4°C. A goat anti-rabbit IgG H&L (HRP) at 1/250 was used as secondary. Counter stained with Hematoxylin.

Biorbyt Ltd.

7 Signet Court, Swann Road
Cambridge
CB5 8LA
United Kingdom

Email: info@biorbyt.com, support@biorbyt.com

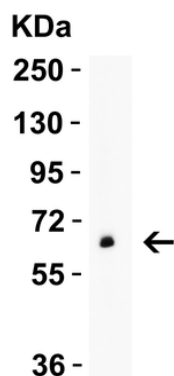
Phone: +44 (0)1223 859353 | Fax: +1 (415) 651-8558

Biorbyt LLC

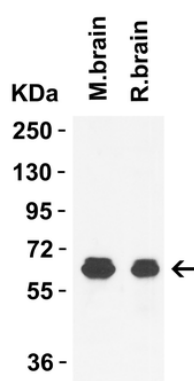
68 TW Alexander Drive
Research Triangle Park
Durham
NC 27713
United States

Email: info@biorbyt.com, support@biorbyt.com

Phone: +1 (415) 906-5211 | Fax: +1 (415) 651-8558



WB Validation in Human Pancreas. Loading: 10 μ g of lysate
Antibodies: GLS2, orb1239416, 2 μ g/mL, 1 h incubation at RT in 5% NFDm/TBST. Secondary: Goat Anti-Rabbit IgG HRP conjugate at 1:10000 dilution.



WB Validation in Mouse and Rat Brain. Loading: 15 μ g of lysate
Antibodies: GLS2, orb1239416, 1 μ g/mL, 1 h incubation at RT in 5% NFDm/TBST. Secondary: Goat Anti-Rabbit IgG HRP conjugate at 1:10000 dilution.

Biorbyt Ltd.

7 Signet Court, Swann Road
Cambridge
CB5 8LA
United Kingdom

Email: info@biorbyt.com, support@biorbyt.com

Phone: +44 (0)1223 859353 | Fax: +1 (415) 651-8558

Biorbyt LLC

68 TW Alexander Drive
Research Triangle Park
Durham
NC 27713
United States

Email: info@biorbyt.com, support@biorbyt.com

Phone: +1 (415) 906-5211 | Fax: +1 (415) 651-8558