

Product Datasheet

ENDO G Antibody (orb1239381)

Catalog Number	orb1239381
Category	Antibodies
Description	ENDO G Antibody
Target	ENDO G
Clonality	Polyclonal
Species/Host	Rabbit
Isotype	IgG
Conjugation	Unconjugated
Reactivity	Human, Mouse, Rat
Form/Appearance	Liquid
Concentration	1 mg/mL
Buffer/Preservatives	EndoG Antibody is supplied in PBS containing 0.02% sodium azide.
Purification	EndoG Antibody is affinity chromatography purified via peptide column.
Immunogen	Anti-EndoG antibody (orb1239381) was raised against a peptide corresponding to 15 amino acids near the amino terminus of human ENDO G. The immunogen is located within amino acids 40-90 of EndoG.
UniProt ID	Q14249
MW	Predicted: 33kD Observed: 33kD
Tested applications	ELISA, IF, IHC-P, WB

Biorbyt Ltd.

7 Signet Court, Swann Road
Cambridge
CB5 8LA
United Kingdom

Email: info@biorbyt.com, support@biorbyt.com

Phone: [+44 \(0\)1223 859353](tel:+44(0)1223859353) | Fax: [+1 \(415\) 651-8558](tel:+1(415)651-8558)

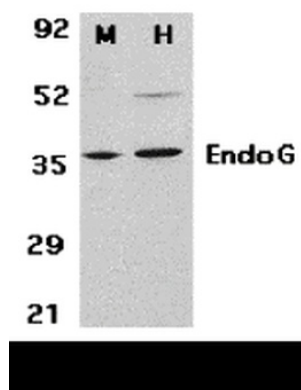
Biorbyt LLC

68 TW Alexander Drive
Research Triangle Park
Durham
NC 27713
United States

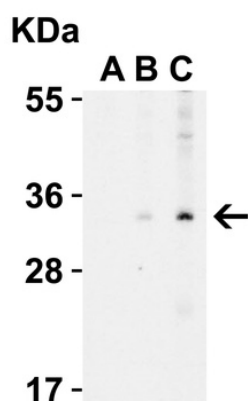
Email: info@biorbyt.com, support@biorbyt.com

Phone: [+1 \(415\) 906-5211](tel:+1(415)906-5211) | Fax: [+1 \(415\) 651-8558](tel:+1(415)651-8558)

Antibody Type	Primary Antibody
Modifications	None
Storage	Maintain refrigerated at 2-8°C for up to 2 weeks. For long term storage store at -20°C in small aliquots to prevent freeze-thaw cycles.
Note	For research use only
NCBI	NP_004426
Expiration Date	12 months from date of receipt.



Western Blot Validation in Mouse 3T3 (M) and Human HepG2 (H) Cell Lysates. Loading: 15 µg of lysates per lane. Antibodies: EndoG orb1239381 (2 µg/mL), 1h incubation at RT in 5% NFDM/TBST. Secondary: Goat anti-rabbit IgG HRP conjugate at 1:10000 dilution.



Western Blot Validation in Human A431 Cell Lysate with the presence (A) or absence (B and C) of blocking peptide. Loading: 15 µg of lysates per lane. Antibodies: EndoG orb1239381 (A: 0.5 µg/mL, B: 0.5 µg/mL, C: 1 µg/mL), 1h incubation at RT in 5% NFDM/TBST. Secondary: Goat anti-rabbit IgG HRP conjugate at 1:10000 dilution.

Biorbyt Ltd.

7 Signet Court, Swann Road
Cambridge
CB5 8LA
United Kingdom

Email: info@biorbyt.com, support@biorbyt.com

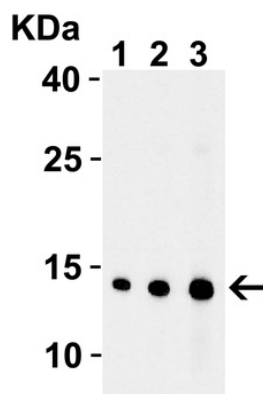
Phone: +44 (0)1223 859353 | Fax: +1 (415) 651-8558

Biorbyt LLC

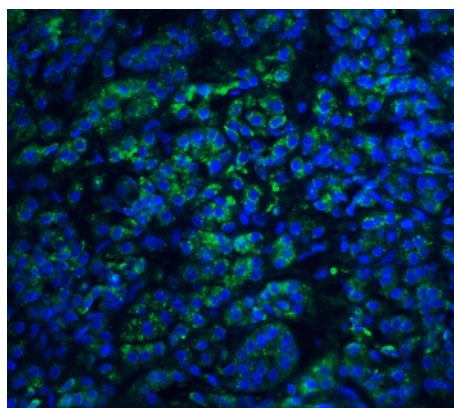
68 TW Alexander Drive
Research Triangle Park
Durham
NC 27713
United States

Email: info@biorbyt.com, support@biorbyt.com

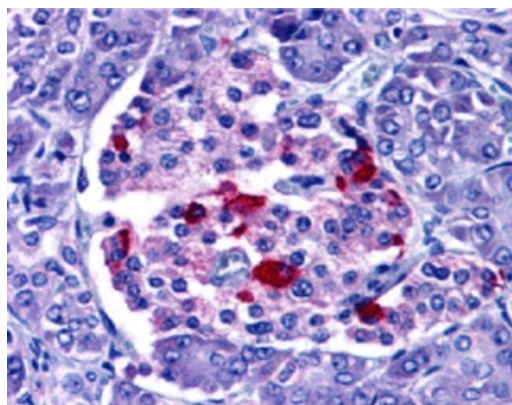
Phone: +1 (415) 906-5211 | Fax: +1 (415) 651-8558



Western Blot Validation with Recombinant Protein. Loading: 30 ng of human EndoG recombinant protein per lane. Antibodies: EndoG orb1239381, 1h incubation at RT in 5% NFDm/TBST. Secondary: Goat anti-rabbit IgG HRP conjugate at 1:10000 dilution. Lane 1: 0.5 µg/mL, Lane 2: 1 µg/mL, Lane 3: 2 µg/mL.



Immunofluorescence Validation of EndoG in Human Pancreas Tissue. Immunofluorescent analysis of 4% paraformaldehyde-fixed human pancreas tissue labeling EndoG with orb1239381 at 20 µg/mL, followed by goat anti-rabbit IgG secondary antibody at 1/500 dilution (green) and DAPI staining (blue).



Immunohistochemistry Validation of EndoG in Human Pancreas Tissue. Immunohistochemical analysis of paraffin-embedded human pancreas tissue using anti-EndoG antibody (orb1239381) at 15 µg/mL. Tissue was fixed with formaldehyde and blocked with 10% serum for 1 h at RT; antigen retrieval was by heat mediation with a citrate buffer (pH6). Samples were incubated with primary antibody overnight at 4°C. A goat anti-rabbit IgG H&L (HRP) at 1/250 was used as secondary. Counter stained with Hematoxylin.

Biorbyt Ltd.

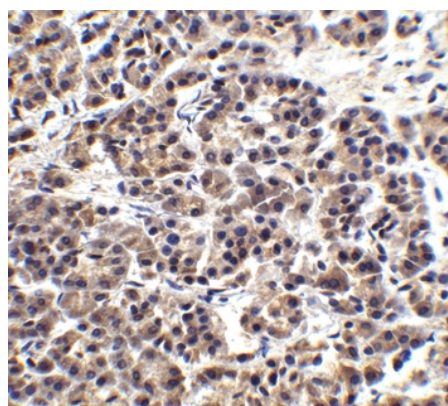
7 Signet Court, Swann Road
Cambridge
CB5 8LA
United Kingdom

Email: info@biorbyt.com, support@biorbyt.com
Phone: +44 (0)1223 859353 | Fax: +1 (415) 651-8558

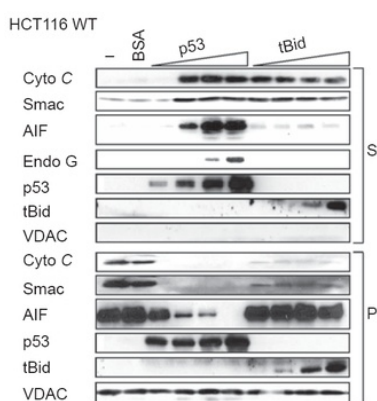
Biorbyt LLC

68 TW Alexander Drive
Research Triangle Park
Durham
NC 27713
United States

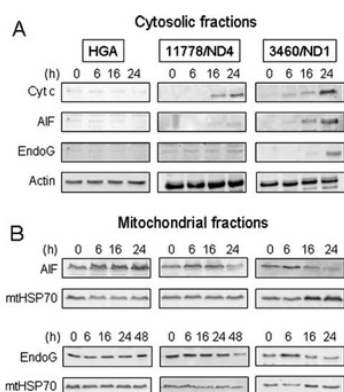
Email: info@biorbyt.com, support@biorbyt.com
Phone: +1 (415) 906-5211 | Fax: +1 (415) 651-8558



Immunohistochemistry Validation of EndoG in Human Pancreas Tissue. Immunohistochemical analysis of paraffin-embedded human pancreas tissue using anti-EndoG antibody (orb1239381) at 2.5 µg/ml. Tissue was fixed with formaldehyde and blocked with 10% serum for 1 h at RT; antigen retrieval was by heat mediation with a citrate buffer (pH6). Samples were incubated with primary antibody overnight at 4°C. A goat anti-rabbit IgG H&L (HRP) at 1/250 was used as secondary. Counter stained with Hematoxylin.



Localization Validation of EndoG by Purified p53 in Human Colorectal Cancer (HCT116) WT Cells (Wolff et al., 2008). Immunoblot analysis of subcellular fraction enriched with supernatant (S) was used to determine EndoG protein levels with increasing amounts of p53 (10, 20, 40, 100nM) in HCT116 WT cells. The release of EndoG from mitochondria induced by p53 is detected by anti-EndoG antibodies.



Localization Validation of EndoG in LHON cybrids (Zanna et al., 2005). Immunoblots of subcellular fractions enriched for (A) cytosol and (B) mitochondria were used to determine EndoG protein levels with anti-EndoG antibodies in LHON cybrids. The release of EndoG from mitochondria into the cytosol of 3460/ND1 mutant is observed after 24hr. Control (HGA) was unaffected.

Biorbyt Ltd.

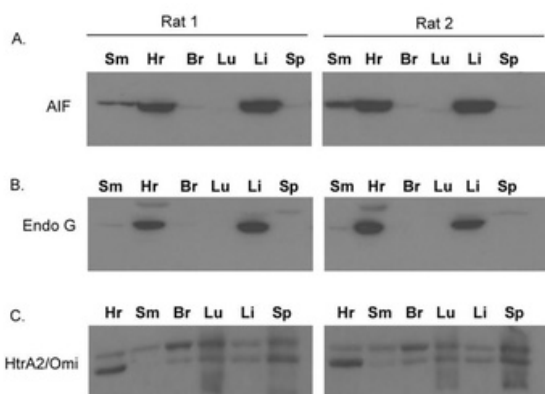
7 Signet Court, Swann Road
Cambridge
CB5 8LA
United Kingdom

Email: info@biorbyt.com, support@biorbyt.com
Phone: +44 (0)1223 859353 | Fax: +1 (415) 651-8558

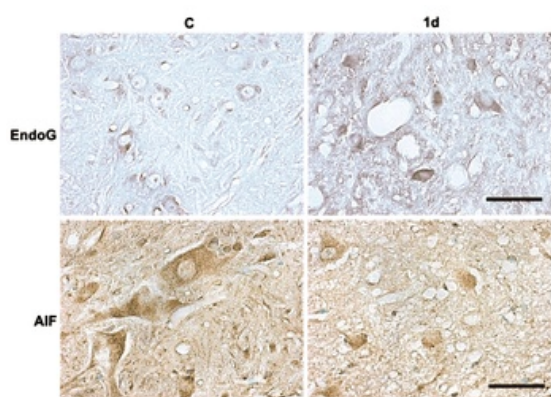
Biorbyt LLC

68 TW Alexander Drive
Research Triangle Park
Durham
NC 27713
United States

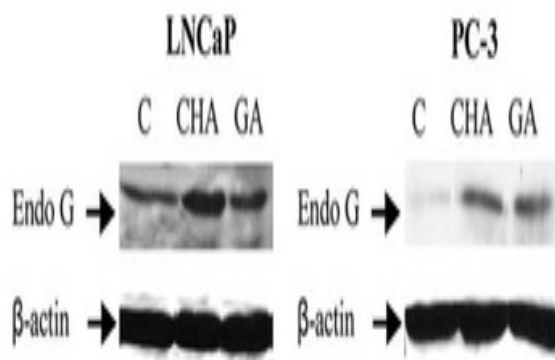
Email: info@biorbyt.com, support@biorbyt.com
Phone: +1 (415) 906-5211 | Fax: +1 (415) 651-8558



Tissue Specificity of EndoG in Rat Organs (Siu et al., 2007). WB analysis with anti-EndoG antibodies was performed for (B) EndoG in different organs of rats. EndoG was expressed very high in the heart and the liver of rats.



Immunohistochemistry Validation of EndoG translocation in Rat Spinal Cord Tissue (Yu et al., 2006). Protein analysis for EndoG translocation by immunohistochemistry with anti-EndoG antibodies in Rat spinal cord tissue. The staining showed that EndoG was expressed in the nuclei of SCI rats (1d) as compared to the perikarya (cytoplasm) in WT.



Translocation of EndoG by α -chaconine (CHA) and gallic acid (GA) in Human Prostate Cancer Cells (Reddivari et al., 2010). Lymph-node carcinoma of the prostate (LNCaP) or prostate cancer-3 (PC-3) cells were treated with CHA (2.5 μ g/ml) or GA (15 μ g/ml) for 24hr. EndoG expression detected by anti-EndoG antibodies was increased significantly in nuclear fraction after CHA or GA treatments while this effect was not observed in the solvent control (C).

Biorbyt Ltd.

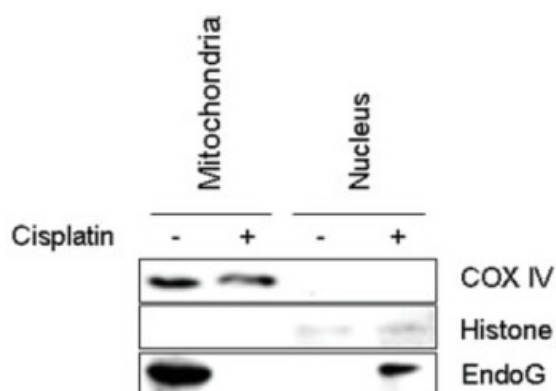
7 Signet Court, Swann Road
Cambridge
CB5 8LA
United Kingdom

Email: info@biorbyt.com, support@biorbyt.com
Phone: +44 (0)1223 859353 | Fax: +1 (415) 651-8558

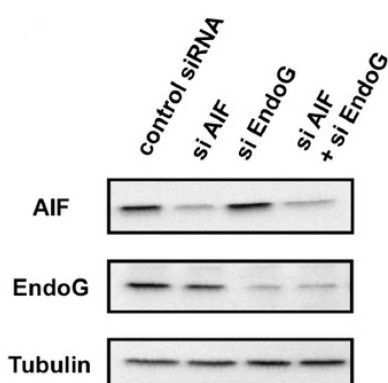
Biorbyt LLC

68 TW Alexander Drive
Research Triangle Park
Durham
NC 27713
United States

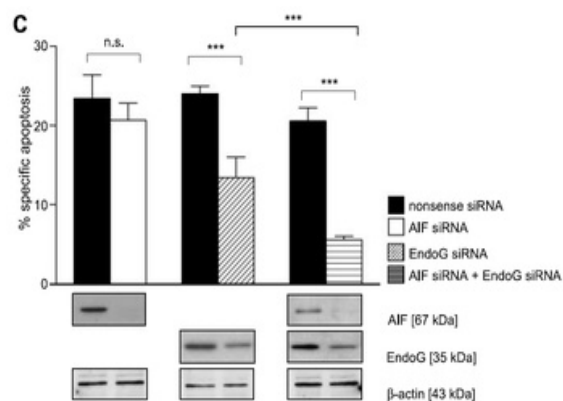
Email: info@biorbyt.com, support@biorbyt.com
Phone: +1 (415) 906-5211 | Fax: +1 (415) 651-8558



Translocation of EndoG by Cisplatin in Human HN4 cells (Kim et al., 2008). Head and Neck Squamous Cell Carcinoma (HNSCC), HN4 cells, from the patients were treated with 40 μ M cisplatin. An increased expression of EndoG was induced in the nuclear fraction by cisplatin treatment, which was not observed in the mitochondria.



KD Validation of EndoG in Human small cell lung carcinoma Ms-1/Bcl-xL Cells (Sasazawa et al., 2009). Western blot analysis with anti-EndoG antibodies was performed for EndoG in Ms-1/Bcl-xL cells transfected with EndoG siRNA or control siRNA. EndoG expression was downregulated after EndoG siRNA knockdown.



KD Validation of EndoG in Human MCF7 Cells (Schneiders et al., 2009). Western blot analysis with anti-EndoG antibodies was performed for EndoG in MCF7 cells transfected with EndoG siRNA or nonsense siRNA. EndoG expression was downregulated and cell apoptosis rate was remarkably decreased after EndoG siRNA knockdown.

Biorbyt Ltd.

7 Signet Court, Swann Road
Cambridge
CB5 8LA
United Kingdom

Email: info@biorbyt.com, support@biorbyt.com
Phone: +44 (0)1223 859353 | Fax: +1 (415) 651-8558

Biorbyt LLC

68 TW Alexander Drive
Research Triangle Park
Durham
NC 27713
United States

Email: info@biorbyt.com, support@biorbyt.com
Phone: +1 (415) 906-5211 | Fax: +1 (415) 651-8558