

Product Datasheet

CX3CR1 Antibody (orb1239314)

Catalog Number	orb1239314
Category	Antibodies
Description	CX3CR1 Antibody
Target	CX3CR1
Clonality	Polyclonal
Species/Host	Rabbit
Isotype	IgG
Conjugation	Unconjugated
Reactivity	Human, Mouse, Rat
Predicted Reactivity	Bovine
Form/Appearance	Liquid
Concentration	1 mg/mL
Buffer/Preservatives	CX3CR1 Antibody is supplied in PBS containing 0.02% sodium azide.
Purification	CX3CR1 Antibody is affinity chromatography purified via peptide column.
Immunogen	Anti-CX3CR1 antibody (orb1239314) was raised against a peptide corresponding to 20 amino acids near the amino terminus of mature human CX3CR1. The immunogen is located within the first 50 amino acids of CX3CR1.
UniProt ID	P49238
MW	Predicted: 40-44 kD Observed: 50 kD

Biorbyt Ltd.

7 Signet Court, Swann Road
Cambridge
CB5 8LA
United Kingdom

Email: info@biorbyt.com, support@biorbyt.com

Phone: [+44 \(0\)1223 859353](tel:+44(0)1223859353) | Fax: [+1 \(415\) 651-8558](tel:+1(415)651-8558)

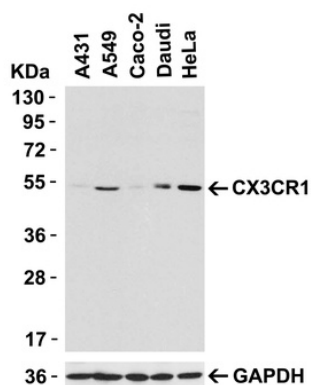
Biorbyt LLC

68 TW Alexander Drive
Research Triangle Park
Durham
NC 27713
United States

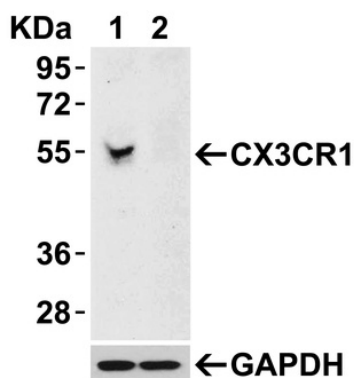
Email: info@biorbyt.com, support@biorbyt.com

Phone: [+1 \(415\) 906-5211](tel:+1(415)906-5211) | Fax: [+1 \(415\) 651-8558](tel:+1(415)651-8558)

Tested applications	ELISA, FC, IF, IHC-P, WB
Antibody Type	Primary Antibody
Modifications	None
Storage	Maintain refrigerated at 2-8°C for up to 2 weeks. For long term storage store at -20°C in small aliquots to prevent freeze-thaw cycles.
Note	For research use only
NCBI	NP_001328
Expiration Date	12 months from date of receipt.



Western Blot Validation in Human Cells. Loading: 15 µg of lysates per lane. Antibodies: CX3CR1 orb1239314 (0.5 µg/mL), 1h incubation at RT in 5% NFDM/TBST. Secondary: Goat anti-rabbit IgG HRP conjugate at 1:10000 dilution.



KD Validation in 293 Cells. Loading: 15 µg of lysates per lane. Antibodies: CX3CR1 orb1239314 (0.5 µg/mL), 1h incubation at RT in 5% NFDM/TBST. Secondary: Goat anti-rabbit IgG HRP conjugate at 1:10000 dilution. Lane 1: 293 cells transfected with control siRNAs. Lane 2: 293 cells transfected with CX3CR1 siRNAs.

Biorbyt Ltd.

7 Signet Court, Swann Road
Cambridge
CB5 8LA
United Kingdom

Email: info@biorbyt.com, support@biorbyt.com

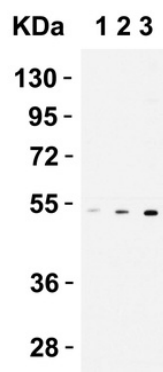
Phone: +44 (0)1223 859353 | Fax: +1 (415) 651-8558

Biorbyt LLC

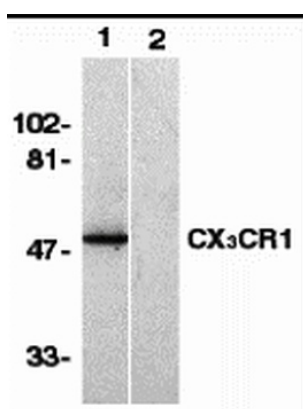
68 TW Alexander Drive
Research Triangle Park
Durham
NC 27713
United States

Email: info@biorbyt.com, support@biorbyt.com

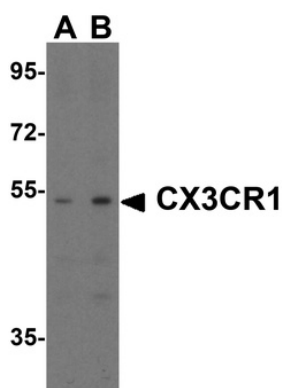
Phone: +1 (415) 906-5211 | Fax: +1 (415) 651-8558



Western Blot Validation in THP1 Cells. Loading: 15 µg of lysates per lane. Antibodies: CX3CR1 orb1239314 (1 µg/mL), 1h incubation at RT in 5% NFDm/TBST. Secondary: Goat anti-rabbit IgG HRP conjugate at 1:10000 dilution. Lane 1: 0.2 µg/mL, Lane 2: 0.5 µg/mL, Lane 3: 1 µg/mL.



Western Blot Validation in Human Spleen Lysates. Loading: 15 µg of lysates per lane. Antibodies: CX3CR1 orb1239314 (1 µg/mL) in the absence (lane 1) or presence of blocking peptide (lane 2), 1h incubation at RT in 5% NFDm/TBST. Secondary: Goat anti-rabbit IgG HRP conjugate at 1:10000 dilution.



Western Blot Validation in Rat Spleen Tissue. Loading: 15 µg of lysates per lane. Antibodies: CX3CR1 orb1239314, (A; 1 µg/mL, B; 2 µg/mL), 1h incubation at RT in 5% NFDm/TBST. Secondary: Goat anti-rabbit IgG HRP conjugate at 1:10000 dilution.

Biorbyt Ltd.

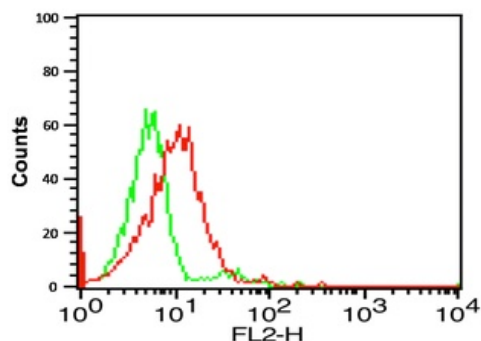
7 Signet Court, Swann Road
Cambridge
CB5 8LA
United Kingdom

Email: info@biorbyt.com, support@biorbyt.com
Phone: +44 (0)1223 859353 | Fax: +1 (415) 651-8558

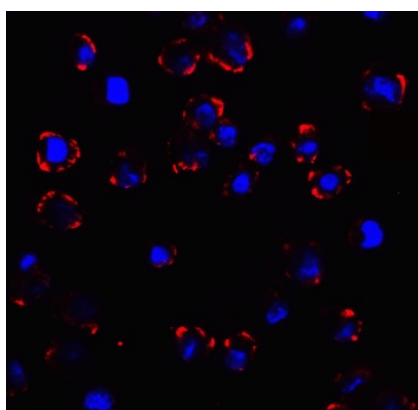
Biorbyt LLC

68 TW Alexander Drive
Research Triangle Park
Durham
NC 27713
United States

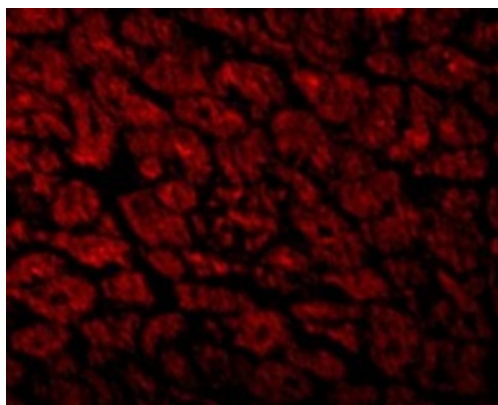
Email: info@biorbyt.com, support@biorbyt.com
Phone: +1 (415) 906-5211 | Fax: +1 (415) 651-8558



Flow Cytometry Validation of CX3CR1 in THP-1 Cells. Overlay histogram showing THP-1 cells stained with orb1239314 (red line, 1 μ g/1x10⁶ cells). 1 h incubation at 4°C in 2% FBS/PBS. Followed by secondary antibody 488 goat anti-rabbit IgG (H+L) at 1/500 dilution for 1 h 4°C. Isotype control antibody (Green line) was rabbit IgG1 (1 μ g/1x10⁶ cells) used under the same conditions. Acquisition of > 10000 events was performed.



Immunofluorescence Validation of CX3CR1 In K562 Cells. Immunofluorescent analysis of 4% paraformaldehyde-fixed K562 cells labeling CX3CR1 with orb1239314 at 10 μ g/mL, followed by goat anti-rabbit IgG secondary antibody at 1/500 dilution (red) and DAPI staining (blue). Image showing membrane staining on K562 cells.



Immunofluorescence Validation of CX3CR1 in Human Heart. Immunofluorescent analysis of 4% paraformaldehyde-fixed human heart tissue labeling CX3CR1 with orb1239314 at 10 μ g/mL, followed by goat anti-rabbit IgG secondary antibody at 1/500 dilution (red).

Biorbyt Ltd.

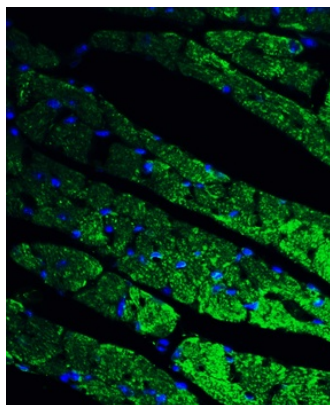
7 Signet Court, Swann Road
Cambridge
CB5 8LA
United Kingdom

Email: info@biorbyt.com, support@biorbyt.com
Phone: +44 (0)1223 859353 | Fax: +1 (415) 651-8558

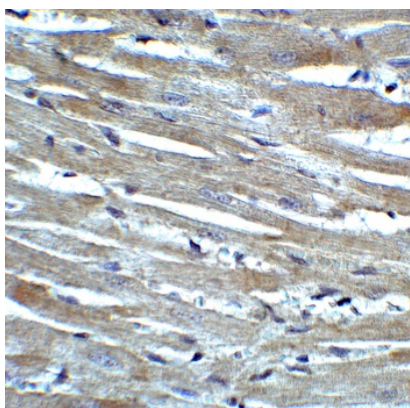
Biorbyt LLC

68 TW Alexander Drive
Research Triangle Park
Durham
NC 27713
United States

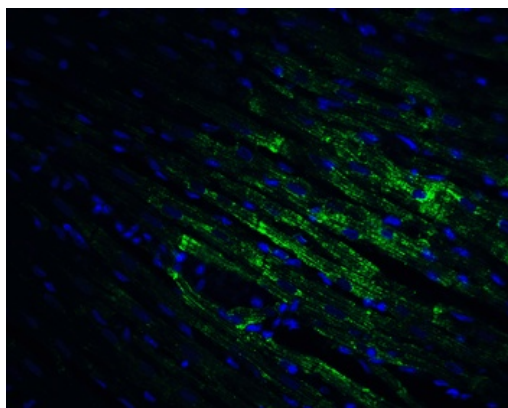
Email: info@biorbyt.com, support@biorbyt.com
Phone: +1 (415) 906-5211 | Fax: +1 (415) 651-8558



Immunofluorescence Validation of CX3CR1 in Mouse Heart Tissue. Immunofluorescent analysis of 4% paraformaldehyde-fixed mouse heart tissue labeling CX3CR1 with orb1239314 at 20 $\mu\text{g}/\text{mL}$, followed by goat anti-rabbit IgG secondary antibody at 1/500 dilution (green) and DAPI staining (blue).



Immunohistochemistry Validation of CX3CR1 in Rat Heart Tissue. Immunohistochemical analysis of paraffin-embedded rat heart tissue using anti-CX3CR1 antibody (orb1239314) at 2 $\mu\text{g}/\text{ml}$. Tissue was fixed with formaldehyde and blocked with 10% serum for 1 h at RT; antigen retrieval was by heat mediation with a citrate buffer (pH6). Samples were incubated with primary antibody overnight at 4°C. A goat anti-rabbit IgG H&L (HRP) at 1/250 was used as secondary. Counter stained with Hematoxylin.



Immunofluorescence Validation of CX3CR1 in Rat Heart Tissue. Immunofluorescent analysis of 4% paraformaldehyde-fixed rat heart tissue labeling CX3CR1 with orb1239314 at 20 $\mu\text{g}/\text{mL}$, followed by goat anti-rabbit IgG secondary antibody at 1/500 dilution (green) and DAPI staining (blue).

Biorbyt Ltd.

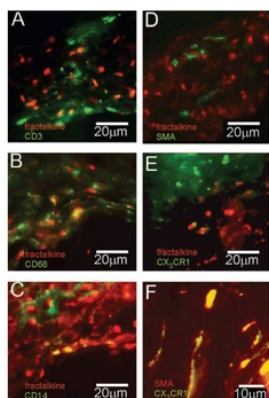
7 Signet Court, Swann Road
Cambridge
CB5 8LA
United Kingdom

Email: info@biorbyt.com, support@biorbyt.com
Phone: [+44 \(0\)1223 859353](tel:+44(0)1223859353) | Fax: [+1 \(415\) 651-8558](tel:+1(415)651-8558)

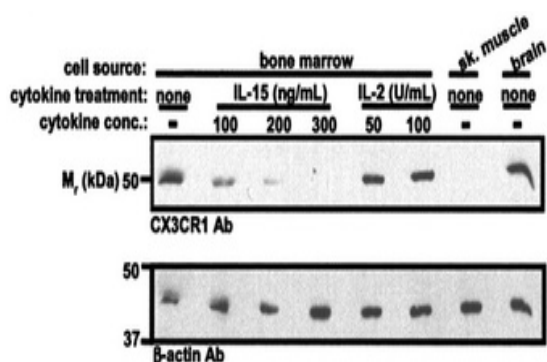
Biorbyt LLC

68 TW Alexander Drive
Research Triangle Park
Durham
NC 27713
United States

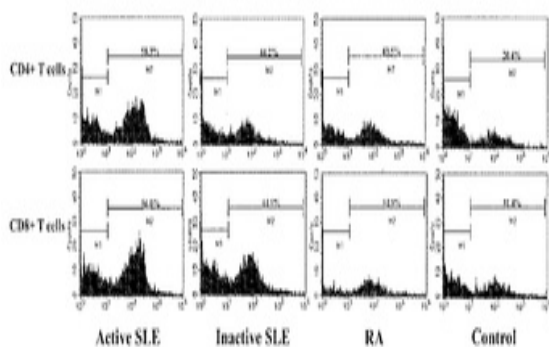
Email: info@biorbyt.com, support@biorbyt.com
Phone: [+1 \(415\) 906-5211](tel:+1(415)906-5211) | Fax: [+1 \(415\) 651-8558](tel:+1(415)651-8558)



Immunofluorescence Validation of CX3CR1 in Human Atherosclerosis (Lucas et al., 2003). CX3CR1-positive cells in coronary artery sections was detected by anti-CX3CR1 antibodies by double staining with an anti-smooth muscle actin antibody (yellow).



Regulated Expression Validation of CX3CR1 in Mouse Bone Marrow-derived NK Cells (Barlic et al., 2003). Western blot analysis of CX3CR1 expression detected by anti-CX3CR1 antibodies was induced by IL-2 but was inhibited by IL-15. Mouse skeletal muscle was for negative control and mouse brain was for positive control.



Flow Cytometry Validation of CX3CR1 in Peripheral Blood Mononuclear Cells (PBMCs) of Patients (Yajima et al., 2005). Flow cytometry analysis of CX3CR1 expression detected by anti-CX3CR1 antibodies. Protein expression was more pronounced on CD4 + and CD8 + T cells from patients with untreated active systemic lupus erythematosus (SLE) as compared to those with rheumatoid arthritis (RA) or healthy controls.

Biorbyt Ltd.

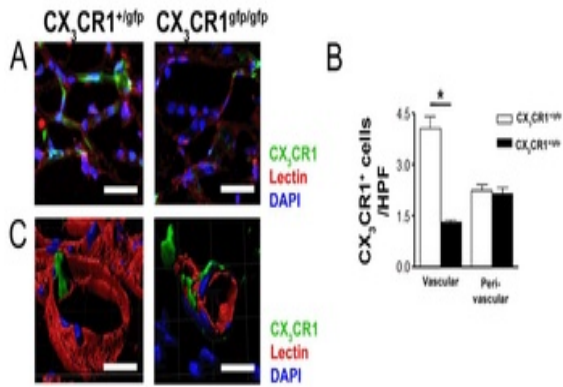
7 Signet Court, Swann Road
Cambridge
CB5 8LA
United Kingdom

Email: info@biorbyt.com, support@biorbyt.com
Phone: +44 (0)1223 859353 | Fax: +1 (415) 651-8558

Biorbyt LLC

68 TW Alexander Drive
Research Triangle Park
Durham
NC 27713
United States

Email: info@biorbyt.com, support@biorbyt.com
Phone: +1 (415) 906-5211 | Fax: +1 (415) 651-8558



CX3CR1 Deficiency Validation in Transgenic Mice (Kumar et al., 2013). Transgenic CX3CR1 gfp (C57BL6/J background) mice, in which either one (CX3CR1 gfp/+) or both (CX3CR1 gfp/gfp) copies of the CX3CR1 gene were interrupted by fluorescent protein (GFP). More CX3CR1 positive cells (green) are found in vascular wall of CX3CR1 gfp/+ mice, but not in CX3CR1 gfp/gfp mice, where cells remained in perivascular region due to leaky microvessels. CX3CR1 expression was detected by anti-CX3CR1 antibodies.

Biorbyt Ltd.

7 Signet Court, Swann Road
Cambridge
CB5 8LA
United Kingdom

Email: info@biorbyt.com, support@biorbyt.com
Phone: +44 (0)1223 859353 | Fax: +1 (415) 651-8558

Biorbyt LLC

68 TW Alexander Drive
Research Triangle Park
Durham
NC 27713
United States

Email: info@biorbyt.com, support@biorbyt.com
Phone: +1 (415) 906-5211 | Fax: +1 (415) 651-8558