

## Product Datasheet

### CTLA4 Antibody (orb1239311)

<b>Catalog Number</b>	orb1239311
<b>Category</b>	Antibodies
<b>Description</b>	CTLA4 Antibody
<b>Target</b>	CTLA4
<b>Clonality</b>	Monoclonal
<b>Species/Host</b>	Mouse
<b>Isotype</b>	IgG1
<b>Conjugation</b>	Unconjugated
<b>Reactivity</b>	Human
<b>Form/Appearance</b>	Liquid
<b>Concentration</b>	1 mg/mL
<b>Buffer/Preservatives</b>	CTLA-4 Antibody is supplied in PBS containing 0.02% sodium azide and 50% glycerol.
<b>Purification</b>	CTLA-4 Antibody is supplied as protein A purified IgG1.
<b>Immunogen</b>	CTLA-4 antibody was raised against the extracellular domain of human CTLA-4.
<b>UniProt ID</b>	<b>P16410</b>
<b>MW</b>	Predicted: 25 kDa Observed: 32 kDa
<b>Tested applications</b>	ELISA, ICC, IF, IHC-P, WB

#### Biorbyt Ltd.

7 Signet Court, Swann Road  
Cambridge  
CB5 8LA  
United Kingdom

Email: [info@biorbyt.com](mailto:info@biorbyt.com), [support@biorbyt.com](mailto:support@biorbyt.com)

Phone: [+44 \(0\)1223 859353](tel:+44(0)1223859353) | Fax: [+1 \(415\) 651-8558](tel:+1(415)651-8558)

#### Biorbyt LLC

68 TW Alexander Drive  
Research Triangle Park  
Durham  
NC 27713-2847  
United States

Email: [info@biorbyt.com](mailto:info@biorbyt.com), [support@biorbyt.com](mailto:support@biorbyt.com)

Phone: [+1 \(415\) 906-5211](tel:+1(415)906-5211) | Fax: [+1 \(415\) 651-8558](tel:+1(415)651-8558)

**Application notes**

CTLA-4 antibody can be used for detection of CTLA-4 by Western blot at 1 - 2 µg/mL. Antibody can also be used for immunohistochemistry starting at 5 µg/mL. For immunofluorescence start at 20 µg/mL. Antibody validated: Western Blot in human samples; Immunohistochemistry in human samples; Immunocytochemistry in human samples and Immunofluorescence in human samples. All other applications and species not yet tested.

**Antibody Type**

Primary Antibody

**Clone Number**

2G10

**Modifications**

None

**Storage**

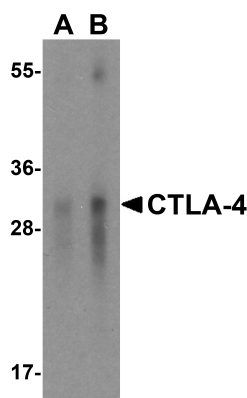
Maintain refrigerated at 2-8°C for up to 2 weeks. For long term storage store at -20°C in small aliquots to prevent freeze-thaw cycles.

**Note**

For research use only

**NCBI****NP\_005205****Expiration Date**

12 months from date of receipt.



Western blot analysis of CTLA-4 in overexpressing HEK293 cells CTLA-4 antibody at 0.5 and 1 µg/mL.

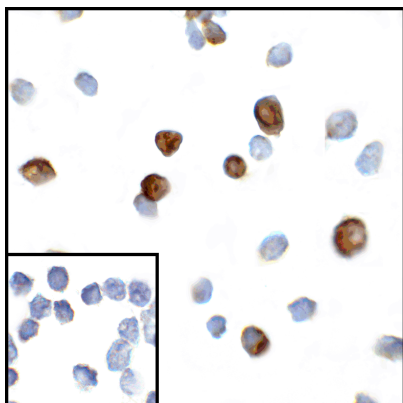
**Biorbyt Ltd.**

7 Signet Court, Swann Road  
Cambridge  
CB5 8LA  
United Kingdom

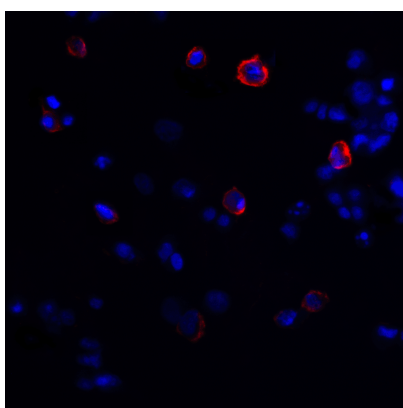
Email: [info@biorbyt.com](mailto:info@biorbyt.com), [support@biorbyt.com](mailto:support@biorbyt.com)Phone: [+44 \(0\)1223 859353](tel:+44(0)1223859353) | Fax: [+1 \(415\) 651-8558](tel:+1(415)651-8558)**Biorbyt LLC**

68 TW Alexander Drive  
Research Triangle Park  
Durham  
NC 27713-2847  
United States

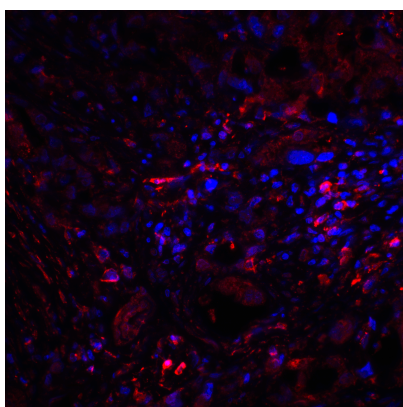
Email: [info@biorbyt.com](mailto:info@biorbyt.com), [support@biorbyt.com](mailto:support@biorbyt.com)Phone: [+1 \(415\) 906-5211](tel:+1(415)906-5211) | Fax: [+1 \(415\) 651-8558](tel:+1(415)651-8558)



Immunocytochemistry of CTLA-4 in transfected HEK293 cells with CTLA-4 antibody at 5 µg/mL. Lower left:  
Immunocytochemistry in transfected HEK293 cells with control mouse IgG antibody at 5 µg/mL.



Immunofluorescence of CTLA-4 in transfected HEK293 cells with CTLA-4 antibody at 20 µg/mL. Red: CTLA4 Antibody [2G10] (orb1239311) Blue: DAPI staining



Immunofluorescence of CTLA-4 in human lymph node tissue with CTLA-4 antibody at 20 µg/mL. Red: CTLA4 Antibody [2G10] (orb1239311) Blue: DAPI staining

**Biorbyt Ltd.**

7 Signet Court, Swann Road  
Cambridge  
CB5 8LA  
United Kingdom

Email: [info@biorbyt.com](mailto:info@biorbyt.com), [support@biorbyt.com](mailto:support@biorbyt.com)

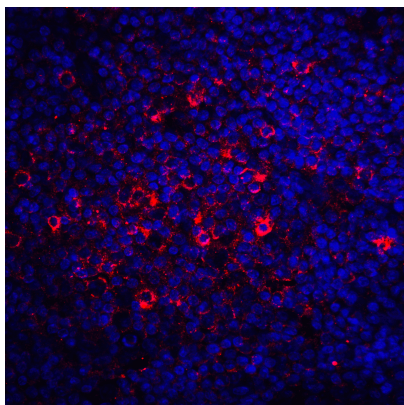
Phone: [+44 \(0\)1223 859353](tel:+44(0)1223859353) | Fax: [+1 \(415\) 651-8558](tel:+1(415)651-8558)

**Biorbyt LLC**

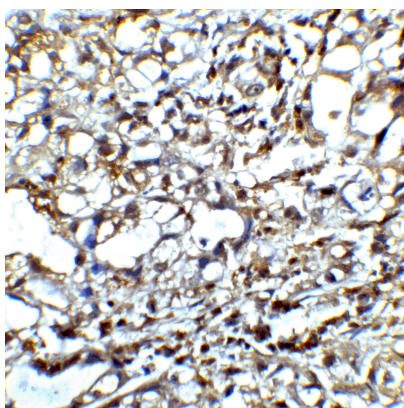
68 TW Alexander Drive  
Research Triangle Park  
Durham  
NC 27713-2847  
United States

Email: [info@biorbyt.com](mailto:info@biorbyt.com), [support@biorbyt.com](mailto:support@biorbyt.com)

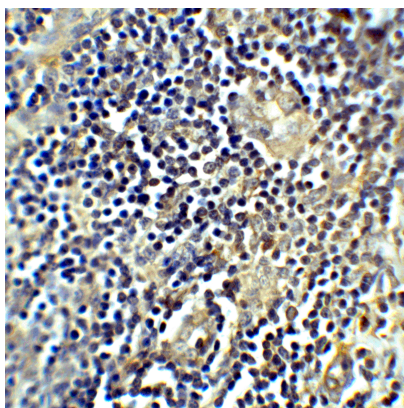
Phone: [+1 \(415\) 906-5211](tel:+1(415)906-5211) | Fax: [+1 \(415\) 651-8558](tel:+1(415)651-8558)



Immunofluorescence of CTLA-4 in human tonsil tissue with CTLA-4 antibody at 20  $\mu\text{g}/\text{mL}$ . Red: CTLA4 Antibody [2G10] (orb1239311) Blue: DAPI staining



Immunohistochemistry of CTLA-4 in human lymph node tissue with CTLA-4 antibody at 5  $\mu\text{g}/\text{mL}$ .



Immunohistochemistry of CTLA-4 in human tonsil tissue with CTLA-4 antibody at 5  $\mu\text{g}/\text{mL}$ .

**Biorbyt Ltd.**

7 Signet Court, Swann Road  
Cambridge  
CB5 8LA  
United Kingdom

Email: [info@biorbyt.com](mailto:info@biorbyt.com), [support@biorbyt.com](mailto:support@biorbyt.com)

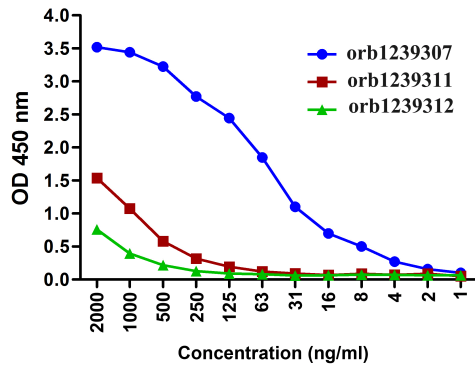
Phone: [+44 \(0\)1223 859353](tel:+44(0)1223859353) | Fax: [+1 \(415\) 651-8558](tel:+1(415)6518558)

**Biorbyt LLC**

68 TW Alexander Drive  
Research Triangle Park  
Durham  
NC 27713-2847  
United States

Email: [info@biorbyt.com](mailto:info@biorbyt.com), [support@biorbyt.com](mailto:support@biorbyt.com)

Phone: [+1 \(415\) 906-5211](tel:+1(415)9065211) | Fax: [+1 \(415\) 651-8558](tel:+1(415)6518558)



Titration curve analysis of CTLA-4 mAbs to detect recombinant CTLA-4 in ELISA with orb1239307, orb1239311, and orb1239312 antibodies at decreasing concentrations.

## Biorbyt Ltd.

7 Signet Court, Swann Road  
Cambridge  
CB5 8LA  
United Kingdom

Email: [info@biorbyt.com](mailto:info@biorbyt.com), [support@biorbyt.com](mailto:support@biorbyt.com)

Phone: [+44 \(0\)1223 859353](tel:+44(0)1223859353) | Fax: [+1 \(415\) 651-8558](tel:+1(415)651-8558)

## Biorbyt LLC

68 TW Alexander Drive  
Research Triangle Park  
Durham  
NC 27713-2847  
United States

Email: [info@biorbyt.com](mailto:info@biorbyt.com), [support@biorbyt.com](mailto:support@biorbyt.com)

Phone: [+1 \(415\) 906-5211](tel:+1(415)906-5211) | Fax: [+1 \(415\) 651-8558](tel:+1(415)651-8558)