

Product Datasheet

CTLA4 Antibody (orb1239307)

Catalog Number	orb1239307
Category	Antibodies
Description	CTLA4 Antibody
Target	CTLA4
Clonality	Monoclonal
Species/Host	Mouse
Isotype	IgG1
Conjugation	Unconjugated
Reactivity	Human
Form/Appearance	Liquid
Concentration	1 mg/mL
Buffer/Preservatives	CTLA-4 Antibody is supplied in PBS containing 0.02% sodium azide and 50% glycerol.
Purification	CTLA-4 Antibody is supplied as protein A purified IgG1.
Immunogen	CTLA-4 antibody was raised against the extracellular domain of human CTLA-4.
UniProt ID	P16410
MW	Predicted: 25 kDa Observed: 32 kDa
Tested applications	ELISA, ICC, IF, IHC-P, WB

Biorbyt Ltd.

7 Signet Court, Swann Road
Cambridge
CB5 8LA
United Kingdom

Email: info@biorbyt.com, support@biorbyt.com

Phone: [+44 \(0\)1223 859353](tel:+44(0)1223859353) | Fax: [+1 \(415\) 651-8558](tel:+1(415)651-8558)

Biorbyt LLC

68 TW Alexander Drive
Research Triangle Park
Durham
NC 27713
United States

Email: info@biorbyt.com, support@biorbyt.com

Phone: [+1 \(415\) 906-5211](tel:+1(415)906-5211) | Fax: [+1 \(415\) 651-8558](tel:+1(415)651-8558)

Application notes

CTLA-4 antibody can be used for detection of CTLA-4 by Western blot at 0.125 - 0.25 µg/mL. Antibody can also be used for immunohistochemistry starting at 5 µg/mL. For immunofluorescence start at 20 µg/mL. Antibody validated: Western Blot in human samples; Immunohistochemistry in human samples; Immunocytochemistry in human samples and Immunofluorescence in human samples. All other applications and species not yet tested.

Antibody Type

Primary Antibody

Clone Number

[1E6]

Modifications

None

Storage

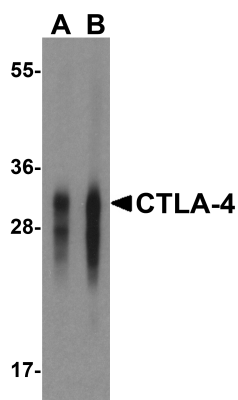
Maintain refrigerated at 2-8°C for up to 2 weeks. For long term storage store at -20°C in small aliquots to prevent freeze-thaw cycles.

Note

For research use only

NCBI**NP_005205****Expiration Date**

12 months from date of receipt.



Western blot analysis of CTLA-4 in overexpressing HEK293 cells CTLA-4 antibody at 0.125 and 0.25 µg/mL.

Biorbyt Ltd.

7 Signet Court, Swann Road
Cambridge
CB5 8LA
United Kingdom

Email: info@biorbyt.com, support@biorbyt.com

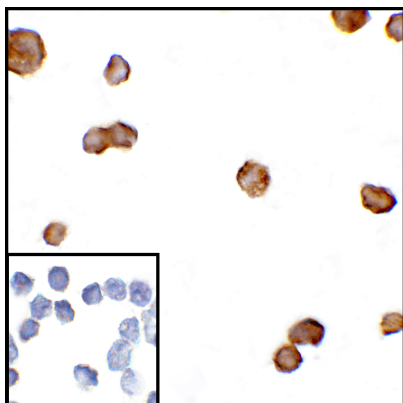
Phone: +44 (0)1223 859353 | Fax: +1 (415) 651-8558

Biorbyt LLC

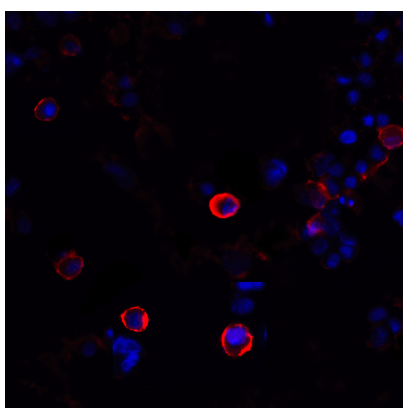
68 TW Alexander Drive
Research Triangle Park
Durham
NC 27713
United States

Email: info@biorbyt.com, support@biorbyt.com

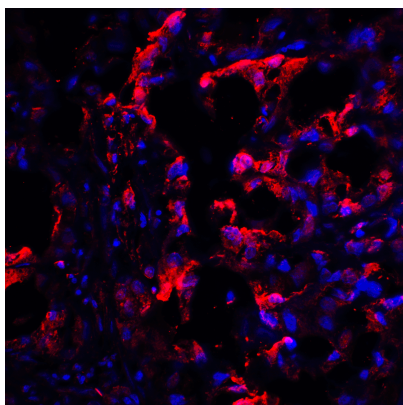
Phone: +1 (415) 906-5211 | Fax: +1 (415) 651-8558



Immunocytochemistry of CTLA-4 in transfected HEK293 cells with CTLA-4 antibody at 5 µg/mL. Lower left:
Immunocytochemistry in transfected HEK293 cells with control mouse IgG antibody at 5 µg/mL.



Immunofluorescence of CTLA-4 in transfected HEK293 cells with CTLA-4 antibody at 20 µg/mL. Red: CTLA4 Antibody [1E6] (orb1239307) Blue: DAPI staining



Immunofluorescence of CTLA-4 in human lymph node tissue with CTLA-4 antibody at 20 µg/mL. Red: CTLA4 Antibody [1E6] (orb1239307) Blue: DAPI staining

Biorbyt Ltd.

7 Signet Court, Swann Road
Cambridge
CB5 8LA
United Kingdom

Email: info@biorbyt.com, support@biorbyt.com

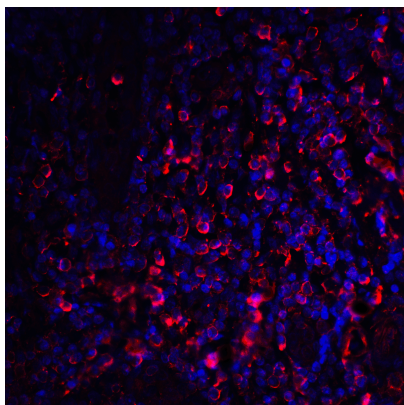
Phone: [+44 \(0\)1223 859353](tel:+44(0)1223859353) | Fax: [+1 \(415\) 651-8558](tel:+1(415)651-8558)

Biorbyt LLC

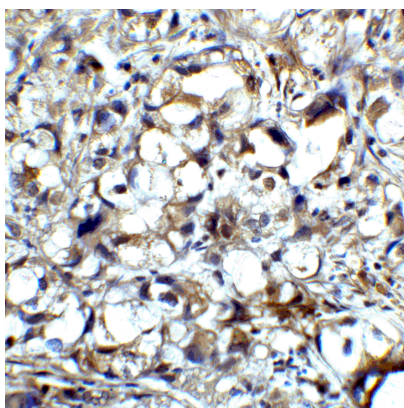
68 TW Alexander Drive
Research Triangle Park
Durham
NC 27713
United States

Email: info@biorbyt.com, support@biorbyt.com

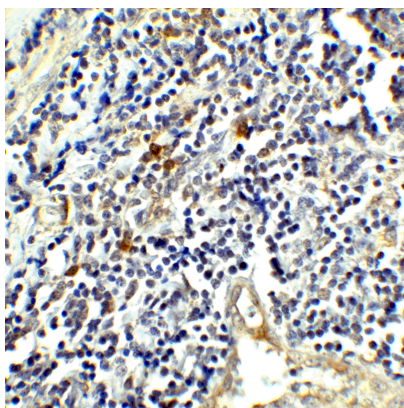
Phone: [+1 \(415\) 906-5211](tel:+1(415)906-5211) | Fax: [+1 \(415\) 651-8558](tel:+1(415)651-8558)



Immunofluorescence of CTLA-4 in human tonsil tissue with CTLA-4 antibody at 20 $\mu\text{g}/\text{mL}$. Red: CTLA4 Antibody [1E6] (orb1239307) Blue: DAPI staining



Immunohistochemistry of CTLA-4 in human lymph node tissue with CTLA-4 antibody at 5 $\mu\text{g}/\text{mL}$.



Immunohistochemistry of CTLA-4 in human tonsil tissue with CTLA-4 antibody at 5 $\mu\text{g}/\text{mL}$.

Biorbyt Ltd.

7 Signet Court, Swann Road
Cambridge
CB5 8LA
United Kingdom

Email: info@biorbyt.com, support@biorbyt.com

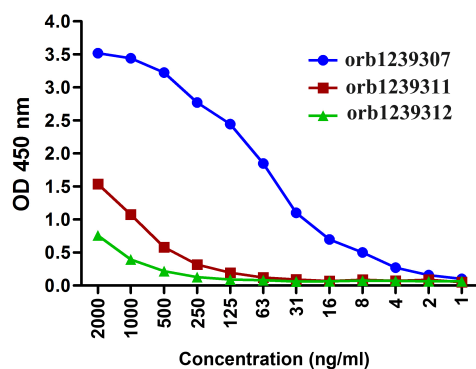
Phone: [+44 \(0\)1223 859353](tel:+44(0)1223859353) | Fax: [+1 \(415\) 651-8558](tel:+1(415)651-8558)

Biorbyt LLC

68 TW Alexander Drive
Research Triangle Park
Durham
NC 27713
United States

Email: info@biorbyt.com, support@biorbyt.com

Phone: [+1 \(415\) 906-5211](tel:+1(415)906-5211) | Fax: [+1 \(415\) 651-8558](tel:+1(415)651-8558)



Titration curve analysis of CTLA-4 mAbs to detect recombinant CTLA-4 in ELISA with orb1239307, orb1239311, and orb1239312 antibodies at decreasing concentrations.

Biorbyt Ltd.

7 Signet Court, Swann Road
Cambridge
CB5 8LA
United Kingdom

Email: info@biorbyt.com, support@biorbyt.com

Phone: [+44 \(0\)1223 859353](tel:+44(0)1223859353) | Fax: [+1 \(415\) 651-8558](tel:+1(415)651-8558)

Biorbyt LLC

68 TW Alexander Drive
Research Triangle Park
Durham
NC 27713
United States

Email: info@biorbyt.com, support@biorbyt.com

Phone: [+1 \(415\) 906-5211](tel:+1(415)906-5211) | Fax: [+1 \(415\) 651-8558](tel:+1(415)651-8558)