

Product Datasheet

CUL9 Antibody (orb1239288)

Catalog Number	orb1239288
Category	Antibodies
Description	CUL9 Antibody
Target	CUL9
Clonality	Polyclonal
Species/Host	Rabbit
Isotype	IgG
Conjugation	Unconjugated
Reactivity	Human, Mouse
Form/Appearance	Liquid
Concentration	1 mg/mL
Buffer/Preservatives	PARC Antibody is supplied in PBS containing 0.02% sodium azide.
Purification	PARC Antibody is affinity chromatography purified via peptide column.
Immunogen	PARC antibody was raised against a 17 amino acid synthetic peptide from near the carboxy terminus of human PARC. The immunogen is located within the last 50 amino acids of PARC.
UniProt ID	Q8IWT3
Tested applications	ELISA, ICC, IF, WB

Biorbyt Ltd.

7 Signet Court, Swann Road
Cambridge
CB5 8LA
United Kingdom

Email: info@biorbyt.com, support@biorbyt.com
Phone: [+44 \(0\)1223 859353](tel:+44(0)1223859353) | Fax: [+1 \(415\) 651-8558](tel:+1(415)651-8558)

Biorbyt LLC

68 TW Alexander Drive
Research Triangle Park
Durham
NC 27713
United States

Email: info@biorbyt.com, support@biorbyt.com
Phone: [+1 \(415\) 906-5211](tel:+1(415)906-5211) | Fax: [+1 \(415\) 651-8558](tel:+1(415)651-8558)

Application notes

PARC antibody can be used for the detection of PARC by Western blot at 1 - 2 $\mu\text{g}/\text{mL}$. Antibody can also be used for immunocytochemistry starting at 1 $\mu\text{g}/\text{mL}$. For immunofluorescence start at 2 $\mu\text{g}/\text{mL}$. Antibody validated: Western Blot in human samples; Immunocytochemistry in human samples and Immunofluorescence in human samples. All other applications and species not yet tested.

Antibody Type

Primary Antibody

Modifications

None

Storage

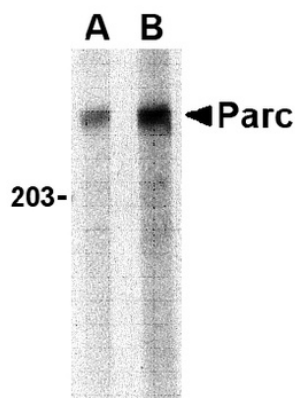
Maintain refrigerated at 2-8°C for up to 2 weeks. For long term storage store at -20°C in small aliquots to prevent freeze-thaw cycles.

Note

For research use only

NCBI[NP_055904](#)**Expiration Date**

12 months from date of receipt.



Western blot analysis of PARC in Daudi lysate with PARC antibody at (A) 1 and (B) 2 $\mu\text{g}/\text{mL}$.

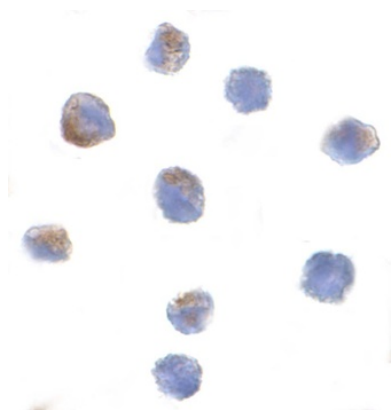
Biorbyt Ltd.

7 Signet Court, Swann Road
Cambridge
CB5 8LA
United Kingdom

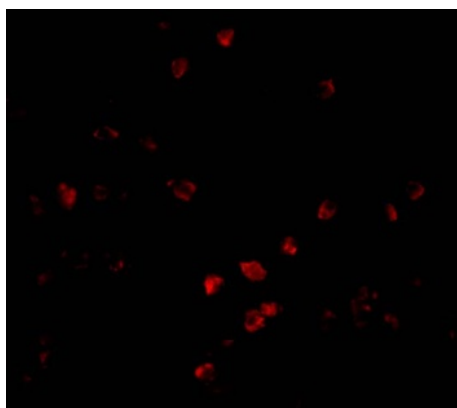
Email: info@biorbyt.com, support@biorbyt.comPhone: [+44 \(0\)1223 859353](tel:+44(0)1223859353) | Fax: [+1 \(415\) 651-8558](tel:+1(415)651-8558)**Biorbyt LLC**

68 TW Alexander Drive
Research Triangle Park
Durham
NC 27713
United States

Email: info@biorbyt.com, support@biorbyt.comPhone: [+1 \(415\) 906-5211](tel:+1(415)906-5211) | Fax: [+1 \(415\) 651-8558](tel:+1(415)651-8558)



Immunocytochemistry of Parc in Daudi cells with Parc antibody at 1 $\mu\text{g}/\text{mL}$.



Immunofluorescence of Bcl-G in Daudi cells with Bcl-G antibody at 2 $\mu\text{g}/\text{mL}$.

Biorbyt Ltd.

7 Signet Court, Swann Road
Cambridge
CB5 8LA
United Kingdom

Email: info@biorbyt.com, support@biorbyt.com

Phone: [+44 \(0\)1223 859353](tel:+44(0)1223859353) | Fax: [+1 \(415\) 651-8558](tel:+1(415)651-8558)

Biorbyt LLC

68 TW Alexander Drive
Research Triangle Park
Durham
NC 27713
United States

Email: info@biorbyt.com, support@biorbyt.com

Phone: [+1 \(415\) 906-5211](tel:+1(415)906-5211) | Fax: [+1 \(415\) 651-8558](tel:+1(415)651-8558)