

Product Datasheet

PPM1D Antibody (orb1239193)

Catalog Number	orb1239193
Category	Antibodies
Description	PPM1D Antibody
Target	PPM1D
Clonality	Polyclonal
Species/Host	Rabbit
Isotype	IgG
Conjugation	Unconjugated
Reactivity	Human, Mouse, Rat
Form/Appearance	Liquid
Concentration	1 mg/mL
Buffer/Preservatives	PPM1D antibody is supplied in PBS containing 0.02% sodium azide.
Purification	PPM1D antibody is affinity chromatography purified via peptide column.
Immunogen	PPM1D antibody was raised against an 18 amino acid peptide near the carboxy terminus of human PPM1D. The immunogen is located within the last 50 amino acids of PPM1D.
UniProt ID	Q8IVR6
MW	Predicted: 67 kDa Observed: 68 kDa
Tested applications	ELISA, IF, IHC-P, WB

Biorbyt Ltd.

7 Signet Court, Swann Road
Cambridge
CB5 8LA
United Kingdom

Email: info@biorbyt.com, support@biorbyt.com

Phone: [+44 \(0\)1223 859353](tel:+44(0)1223859353) | Fax: [+1 \(415\) 651-8558](tel:+1(415)651-8558)

Biorbyt LLC

68 TW Alexander Drive
Research Triangle Park
Durham
NC 27713
United States

Email: info@biorbyt.com, support@biorbyt.com

Phone: [+1 \(415\) 906-5211](tel:+1(415)906-5211) | Fax: [+1 \(415\) 651-8558](tel:+1(415)651-8558)

Application notes

PPM1D antibody can be used for detection of PPM1D by Western blot at 1 - 2 µg/ml. Antibody can also be used for immunohistochemistry starting at 5 µg/mL. For immunofluorescence start at 20 µg/mL. Antibody validated: Western Blot in mouse samples; Immunohistochemistry in human samples and Immunofluorescence in human samples. All other applications and species not yet tested.

Specificity

PPM1D antibody is human, mouse and rat reactive. At least two isoforms of PPM1D are known to exist; this antibody will only detect the larger isoform.

Antibody Type

Primary Antibody

Modifications

None

Storage

Maintain refrigerated at 2-8°C for up to 2 weeks. For long term storage store at -20°C in small aliquots to prevent freeze-thaw cycles.

Note

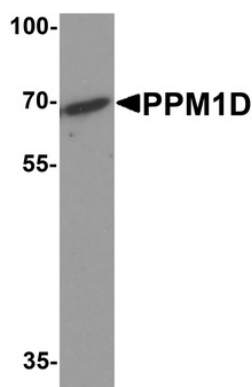
For research use only

NCBI

NP_003611

Expiration Date

12 months from date of receipt.



Western blot analysis of PPM1D in 3T3 cell lysate with PPM1D antibody at 1 µg/ml.

Biorbyt Ltd.

7 Signet Court, Swann Road
Cambridge
CB5 8LA
United Kingdom

Email: info@biorbyt.com, support@biorbyt.com

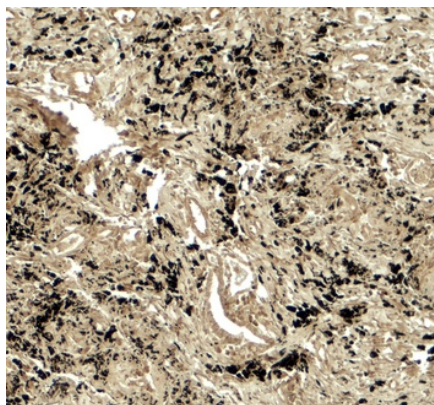
Phone: +44 (0)1223 859353 | Fax: +1 (415) 651-8558

Biorbyt LLC

68 TW Alexander Drive
Research Triangle Park
Durham
NC 27713
United States

Email: info@biorbyt.com, support@biorbyt.com

Phone: +1 (415) 906-5211 | Fax: +1 (415) 651-8558



Immunohistochemistry of PPM1D in human lung carcinoma tissue with PPM1D antibody at 5 µg/ml.



Immunofluorescence of PPM1D in human lung carcinoma tissue with PPM1D antibody at 20 µg/ml.

Biorbyt Ltd.

7 Signet Court, Swann Road
Cambridge
CB5 8LA
United Kingdom

Email: info@biorbyt.com, support@biorbyt.com

Phone: [+44 \(0\)1223 859353](tel:+44(0)1223859353) | Fax: [+1 \(415\) 651-8558](tel:+1(415)651-8558)

Biorbyt LLC

68 TW Alexander Drive
Research Triangle Park
Durham
NC 27713
United States

Email: info@biorbyt.com, support@biorbyt.com

Phone: [+1 \(415\) 906-5211](tel:+1(415)906-5211) | Fax: [+1 \(415\) 651-8558](tel:+1(415)651-8558)