

Product Datasheet

PRICKLE2 Antibody (orb1239186)

Catalog Number	orb1239186
Category	Antibodies
Description	PRICKLE2 Antibody
Target	PRICKLE2
Clonality	Polyclonal
Species/Host	Rabbit
Isotype	IgG
Conjugation	Unconjugated
Reactivity	Human, Mouse, Rat
Form/Appearance	Liquid
Concentration	1 mg/mL
Buffer/Preservatives	PRICKLE2 Antibody is supplied in PBS containing 0.02% sodium azide.
Purification	PRICKLE2 Antibody is affinity chromatography purified via peptide column.
Immunogen	PRICKLE2 antibody was raised against a 15 amino acid synthetic peptide near the center of human PRICKLE2. The immunogen is located within amino acids 420 - 470 of PRICKLE2.
UniProt ID	Q7Z3G6
Tested applications	ELISA, IF, WB

Biorbyt Ltd.

7 Signet Court, Swann Road
Cambridge
CB5 8LA
United Kingdom

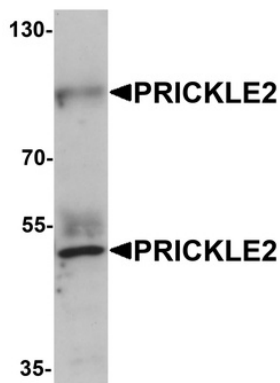
Email: info@biorbyt.com, support@biorbyt.com
Phone: [+44 \(0\)1223 859353](tel:+44(0)1223859353) | Fax: [+1 \(415\) 651-8558](tel:+1(415)651-8558)

Biorbyt LLC

68 TW Alexander Drive
Research Triangle Park
Durham
NC 27713-2847
United States

Email: info@biorbyt.com, support@biorbyt.com
Phone: [+1 \(415\) 906-5211](tel:+1(415)906-5211) | Fax: [+1 \(415\) 651-8558](tel:+1(415)651-8558)

Application notes	PRICKLE2 antibody can be used for detection of PRICKLE2 by Western blot at 1 µg/mL. Antibody can also be used for immunofluorescence starting at 20 µg/mL. For immunofluorescence start at 20 µg/mL. Antibody validated: Western Blot in mouse samples and Immunofluorescence in rat samples. All other applications and species not yet tested.
Specificity	Two isoforms of PRICKLE2 are known to exist. PRICKLE2 antibody is predicted to not cross-react with other PRICKLE protein family members.
Antibody Type	Primary Antibody
Modifications	None
Storage	Maintain refrigerated at 2-8°C for up to 2 weeks. For long term storage store at -20°C in small aliquots to prevent freeze-thaw cycles.
Note	For research use only
NCBI	NP_942559
Expiration Date	12 months from date of receipt.



Western blot analysis of PRICKLE2 in A-20 lysate with PRICKLE2 antibody at 1 µg/mL.

Biorbyt Ltd.

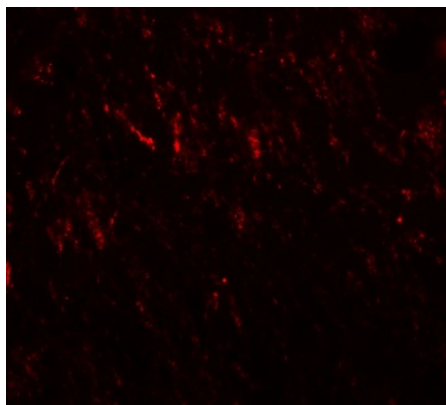
7 Signet Court, Swann Road
Cambridge
CB5 8LA
United Kingdom

Email: info@biorbyt.com, support@biorbyt.com
Phone: [+44 \(0\)1223 859353](tel:+44(0)1223859353) | Fax: [+1 \(415\) 651-8558](tel:+1(415)651-8558)

Biorbyt LLC

68 TW Alexander Drive
Research Triangle Park
Durham
NC 27713-2847
United States

Email: info@biorbyt.com, support@biorbyt.com
Phone: [+1 \(415\) 906-5211](tel:+1(415)906-5211) | Fax: [+1 \(415\) 651-8558](tel:+1(415)651-8558)



Immunofluorescence of PRICKLE2 in rat brain cells with PRICKLE2 antibody at 20 $\mu\text{g}/\text{mL}$.

Biorbyt Ltd.

7 Signet Court, Swann Road
Cambridge
CB5 8LA
United Kingdom

Email: info@biorbyt.com, support@biorbyt.com

Phone: [+44 \(0\)1223 859353](tel:+44(0)1223859353) | Fax: [+1 \(415\) 651-8558](tel:+1(415)651-8558)

Biorbyt LLC

68 TW Alexander Drive
Research Triangle Park
Durham
NC 27713-2847
United States

Email: info@biorbyt.com, support@biorbyt.com

Phone: [+1 \(415\) 906-5211](tel:+1(415)906-5211) | Fax: [+1 \(415\) 651-8558](tel:+1(415)651-8558)