

## Product Datasheet

### ACE2 Antibody (orb1239135)

<b>Catalog Number</b>	orb1239135
<b>Category</b>	Antibodies
<b>Description</b>	ACE2 Antibody
<b>Target</b>	ACE2
<b>Clonality</b>	Polyclonal
<b>Species/Host</b>	Rabbit
<b>Isotype</b>	IgG
<b>Conjugation</b>	Unconjugated
<b>Reactivity</b>	Human, Mouse, Rat
<b>Predicted Reactivity</b>	Bovine
<b>Form/Appearance</b>	Liquid
<b>Concentration</b>	1 mg/mL
<b>Buffer/Preservatives</b>	ACE2 Antibody is supplied in PBS containing 0.02% sodium azide.
<b>Purification</b>	ACE2 Antibody is affinity chromatography purified via peptide column.
<b>Immunogen</b>	ACE2 antibody was raised against a synthetic peptide corresponding to amino acids near the center of human ACE2. The immunogen is located within amino acids 150 - 200 of ACE2.
<b>UniProt ID</b>	<b>Q9BYF1</b>
<b>MW</b>	Predicted: 93kD Observed: 130 kD (7 N-linked glycosylation)

**Biorbyt Ltd.**

7 Signet Court, Swann Road  
Cambridge  
CB5 8LA  
United Kingdom

Email: [info@biorbyt.com](mailto:info@biorbyt.com), [support@biorbyt.com](mailto:support@biorbyt.com)

Phone: [+44 \(0\)1223 859353](tel:+44(0)1223859353) | Fax: [+1 \(415\) 651-8558](tel:+1(415)651-8558)

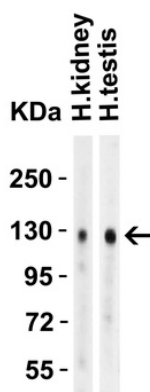
**Biorbyt LLC**

68 TW Alexander Drive  
Research Triangle Park  
Durham  
NC 27713  
United States

Email: [info@biorbyt.com](mailto:info@biorbyt.com), [support@biorbyt.com](mailto:support@biorbyt.com)

Phone: [+1 \(415\) 906-5211](tel:+1(415)906-5211) | Fax: [+1 \(415\) 651-8558](tel:+1(415)651-8558)

<b>Tested applications</b>	ELISA, IF, IHC-P, WB
<b>Application notes</b>	WB: 4 µg/mL; IHC: 2 µg/mL; IF: 20 µg/mL. Antibody validated: Western Blot in human, mouse and rat samples; Immunohistochemistry in human, mouse and rat samples; Immunofluorescence in human, mouse, and rat samples. All other applications and species not yet tested.
<b>Specificity</b>	Anti-ACE2 has no cross response to ACE1.
<b>Antibody Type</b>	Primary Antibody
<b>Modifications</b>	None
<b>Storage</b>	Maintain refrigerated at 2-8°C for up to 2 weeks. For long term storage store at -20°C in small aliquots to prevent freeze-thaw cycles.
<b>Note</b>	For research use only
<b>NCBI</b>	<b>NP_068576</b>
<b>Expiration Date</b>	12 months from date of receipt.



Western Blot Validation in Human Tissues. Loading: 15 µg of lysates per lane. Antibodies: ACE2, orb1239135 (4 µg/mL), 1h incubation at RT in 5% NFD/MTBST. Secondary: Goat anti-rabbit IgG HRP conjugate at 1:10000 dilution.

**Biorbyt Ltd.**

7 Signet Court, Swann Road  
Cambridge  
CB5 8LA  
United Kingdom

Email: [info@biorbyt.com](mailto:info@biorbyt.com), [support@biorbyt.com](mailto:support@biorbyt.com)

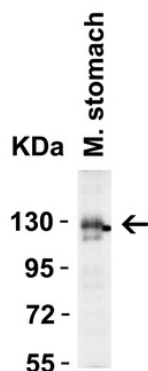
Phone: +44 (0)1223 859353 | Fax: +1 (415) 651-8558

**Biorbyt LLC**

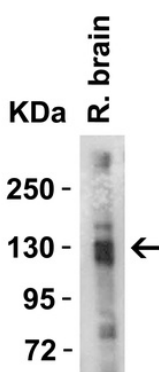
68 TW Alexander Drive  
Research Triangle Park  
Durham  
NC 27713  
United States

Email: [info@biorbyt.com](mailto:info@biorbyt.com), [support@biorbyt.com](mailto:support@biorbyt.com)

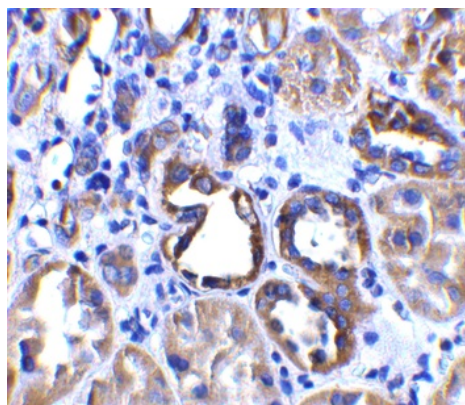
Phone: +1 (415) 906-5211 | Fax: +1 (415) 651-8558



Western Blot Validation in Mouse Stomach Tissue. Loading: 15  $\mu$ g of lysates per lane. Antibodies: ACE2, orb1239135 (4  $\mu$ g/mL), 1h incubation at RT in 5% NFDN/TBST. Secondary: Goat anti-rabbit IgG HRP conjugate at 1:10000 dilution.



Western Blot Validation in Rat Brain Tissue. Loading: 15  $\mu$ g of lysates per lane. Antibodies: ACE2, orb1239135 (4  $\mu$ g/mL), 1h incubation at RT in 5% NFDN/TBST. Secondary: Goat anti-rabbit IgG HRP conjugate at 1:10000 dilution.



Immunohistochemistry Validation of ACE2 in Human Kidney Tissue. Immunohistochemical analysis of paraffin-embedded human kidney tissue using anti-ACE2 antibody (orb1239135) at 2  $\mu$ g/ml. Tissue was fixed with formaldehyde and blocked with 10% serum for 1 h at RT; antigen retrieval was by heat mediation with a citrate buffer (pH6). Samples were incubated with primary antibody overnight at 4 °C. A goat anti-rabbit IgG H&L (HRP) at 1/250 was used as secondary. Counter stained with Hematoxylin.

**Biorbyt Ltd.**

7 Signet Court, Swann Road  
Cambridge  
CB5 8LA  
United Kingdom

Email: [info@biorbyt.com](mailto:info@biorbyt.com), [support@biorbyt.com](mailto:support@biorbyt.com)

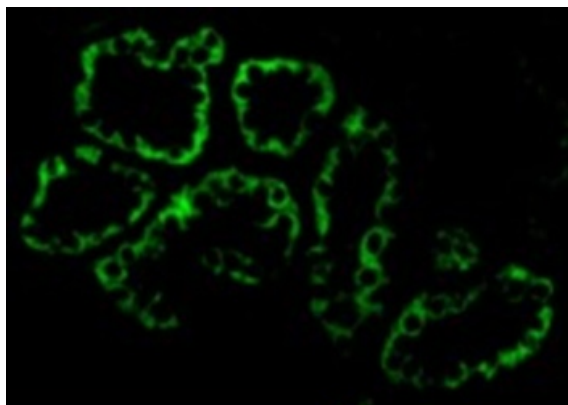
Phone: +44 (0)1223 859353 | Fax: +1 (415) 651-8558

**Biorbyt LLC**

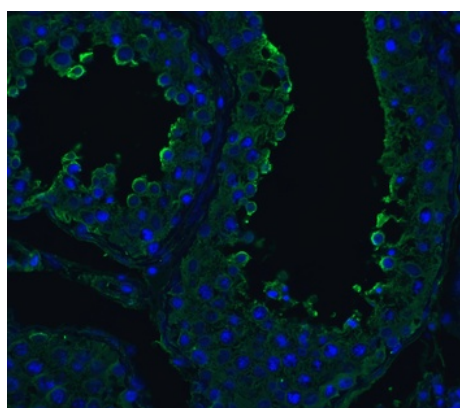
68 TW Alexander Drive  
Research Triangle Park  
Durham  
NC 27713  
United States

Email: [info@biorbyt.com](mailto:info@biorbyt.com), [support@biorbyt.com](mailto:support@biorbyt.com)

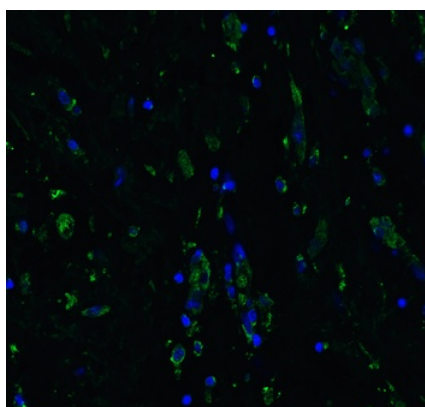
Phone: +1 (415) 906-5211 | Fax: +1 (415) 651-8558



Immunofluorescence Validation of ACE2 in Human Kidney Cells. Immunofluorescent analysis of 4% paraformaldehyde-fixed human kidney cells labeling ACE2 with orb1239135 at 20 µg/mL, followed by goat anti-rabbit IgG secondary antibody at 1/500 dilution (green).



Immunofluorescence Validation of ACE2 in Human Testis Tissue. Immunofluorescent analysis of 4% paraformaldehyde-fixed human testis tissue labeling ACE-2 with orb1239135 at 20 µg/mL, followed by goat anti-rabbit IgG secondary antibody at 1/500 dilution (green) and DAPI staining (blue).



Immunofluorescence Validation of ACE2 in Human Lung Tissue. Immunofluorescent analysis of 4% paraformaldehyde-fixed human lung tissue labeling ACE-2 with orb1239135 at 20 µg/mL, followed by goat anti-rabbit IgG secondary antibody at 1/500 dilution (green) and DAPI staining (blue).

**Biorbyt Ltd.**

7 Signet Court, Swann Road  
Cambridge  
CB5 8LA  
United Kingdom

Email: [info@biorbyt.com](mailto:info@biorbyt.com), [support@biorbyt.com](mailto:support@biorbyt.com)

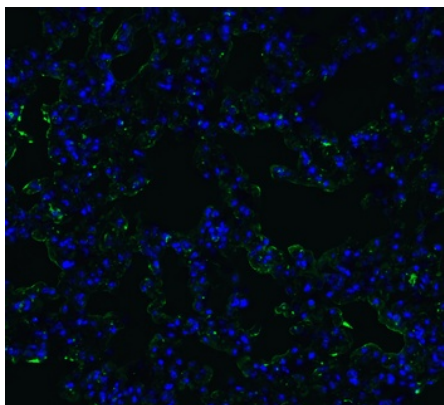
Phone: [+44 \(0\)1223 859353](tel:+44(0)1223859353) | Fax: [+1 \(415\) 651-8558](tel:+1(415)651-8558)

**Biorbyt LLC**

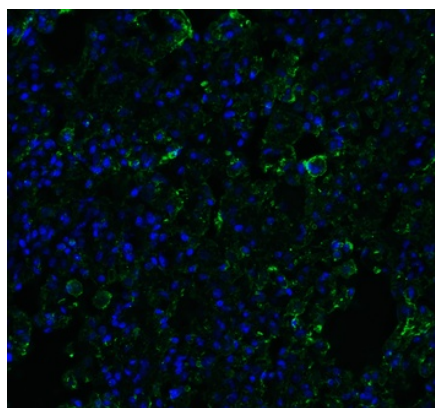
68 TW Alexander Drive  
Research Triangle Park  
Durham  
NC 27713  
United States

Email: [info@biorbyt.com](mailto:info@biorbyt.com), [support@biorbyt.com](mailto:support@biorbyt.com)

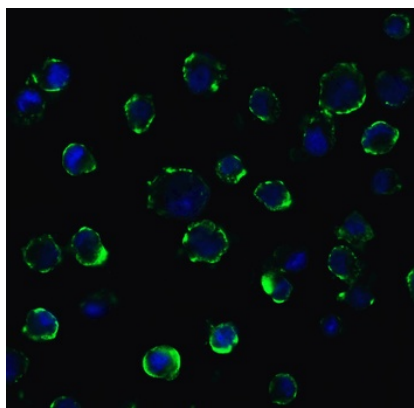
Phone: [+1 \(415\) 906-5211](tel:+1(415)906-5211) | Fax: [+1 \(415\) 651-8558](tel:+1(415)651-8558)



Immunofluorescence Validation of ACE2 in Mouse Lung Tissue. Immunofluorescent analysis of 4% paraformaldehyde-fixed mouse lung tissue labeling ACE-2 with orb1239135 at 20 µg/mL, followed by goat anti-rabbit IgG secondary antibody at 1/500 dilution (green) and DAPI staining (blue).



Immunofluorescence Validation of ACE2 in Rat Lung Tissue. Immunofluorescent analysis of 4% paraformaldehyde-fixed rat lung tissue labeling ACE-2 with orb1239135 at 20 µg/mL, followed by goat anti-rabbit IgG secondary antibody at 1/500 dilution (green) and DAPI staining (blue).



Immunofluorescence Validation of ACE2 In Caco2 Cells. Immunofluorescent analysis of 4% paraformaldehyde-fixed Caco2 cells labeling ACE2 with orb1239135 at 5 µg/mL, followed by goat anti-rabbit IgG secondary antibody at 1/500 dilution (green) and DAPI staining (blue). Image showing membrane staining on Caco2 cells.

**Biorbyt Ltd.**

7 Signet Court, Swann Road  
Cambridge  
CB5 8LA  
United Kingdom

Email: [info@biorbyt.com](mailto:info@biorbyt.com), [support@biorbyt.com](mailto:support@biorbyt.com)

Phone: [+44 \(0\)1223 859353](tel:+44(0)1223859353) | Fax: [+1 \(415\) 651-8558](tel:+1(415)651-8558)

**Biorbyt LLC**

68 TW Alexander Drive  
Research Triangle Park  
Durham  
NC 27713  
United States

Email: [info@biorbyt.com](mailto:info@biorbyt.com), [support@biorbyt.com](mailto:support@biorbyt.com)

Phone: [+1 \(415\) 906-5211](tel:+1(415)906-5211) | Fax: [+1 \(415\) 651-8558](tel:+1(415)651-8558)