

## Product Datasheet

### C19orf80 Antibody (orb1239052)

<b>Catalog Number</b>	orb1239052
<b>Category</b>	Antibodies
<b>Description</b>	C19orf80 Antibody
<b>Target</b>	C19orf80
<b>Clonality</b>	Polyclonal
<b>Species/Host</b>	Rabbit
<b>Isotype</b>	IgG
<b>Conjugation</b>	Unconjugated
<b>Reactivity</b>	Human, Mouse, Rat
<b>Form/Appearance</b>	Liquid
<b>Concentration</b>	1 mg/mL
<b>Buffer/Preservatives</b>	Betatrophin antibody is supplied in PBS containing 0.02% sodium azide.
<b>Purification</b>	Betatrophin antibody is affinity chromatography purified via peptide column.
<b>Immunogen</b>	Betatrophin antibody was raised against a 16 amino acid peptide near the amino terminus of human Betatrophin. The immunogen is located within amino acids 40 - 90 of Betatrophin.
<b>UniProt ID</b>	<b>Q6UXH0</b>
<b>MW</b>	Predicted: 22 kDa Observed: 22 kDa
<b>Tested applications</b>	ELISA, IF, IHC-P, WB

**Biorbyt Ltd.**

7 Signet Court, Swann Road  
Cambridge  
CB5 8LA  
United Kingdom

Email: [info@biorbyt.com](mailto:info@biorbyt.com), [support@biorbyt.com](mailto:support@biorbyt.com)  
Phone: [+44 \(0\)1223 859353](tel:+44(0)1223859353) | Fax: [+1 \(415\) 651-8558](tel:+1(415)651-8558)

**Biorbyt LLC**

68 TW Alexander Drive  
Research Triangle Park  
Durham  
NC 27713  
United States

Email: [info@biorbyt.com](mailto:info@biorbyt.com), [support@biorbyt.com](mailto:support@biorbyt.com)  
Phone: [+1 \(415\) 906-5211](tel:+1(415)906-5211) | Fax: [+1 \(415\) 651-8558](tel:+1(415)651-8558)

**Application notes**

Betatrophin antibody can be used for detection of Betatrophin by Western blot at 1 - 2  $\mu\text{g/ml}$ . Antibody can also be used for Immunohistochemistry starting at 5  $\mu\text{g/mL}$ . For immunofluorescence start at 20  $\mu\text{g/mL}$ . Antibody validated: Western Blot in rat samples; Immunohistochemistry in mouse and rat samples and Immunofluorescence in rat samples. All other applications and species not yet tested.

**Specificity**

Betatrophin antibody is human, mouse and rat reactive. At least three isoforms of Betatrophin are known to exist; this antibody will detect the two largest isoforms.

**Antibody Type**

Primary Antibody

**Modifications**

None

**Storage**

Maintain refrigerated at 2-8°C for up to 2 weeks. For long term storage store at -20°C in small aliquots to prevent freeze-thaw cycles.

**Note**

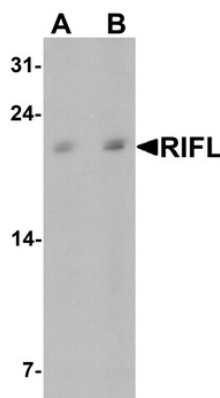
For research use only

**NCBI**

**NP\_061157**

**Expiration Date**

12 months from date of receipt.



Western blot analysis of Betatrophin in rat liver tissue lysate with Betatrophin antibody at (A) 1 and (B) 2  $\mu\text{g/ml}$ .

**Biorbyt Ltd.**

7 Signet Court, Swann Road  
Cambridge  
CB5 8LA  
United Kingdom

Email: [info@biorbyt.com](mailto:info@biorbyt.com), [support@biorbyt.com](mailto:support@biorbyt.com)

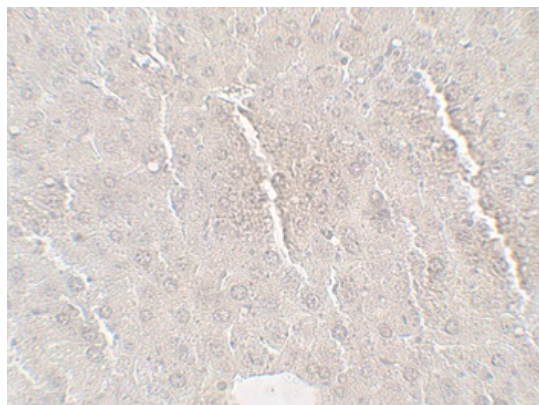
Phone: +44 (0)1223 859353 | Fax: +1 (415) 651-8558

**Biorbyt LLC**

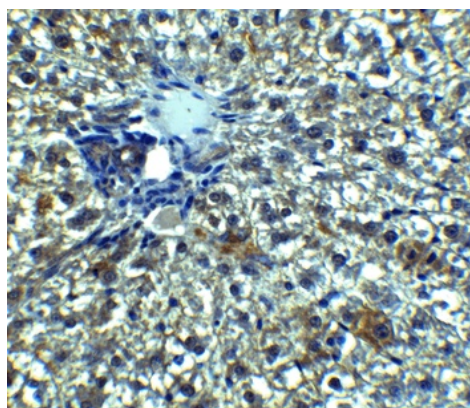
68 TW Alexander Drive  
Research Triangle Park  
Durham  
NC 27713  
United States

Email: [info@biorbyt.com](mailto:info@biorbyt.com), [support@biorbyt.com](mailto:support@biorbyt.com)

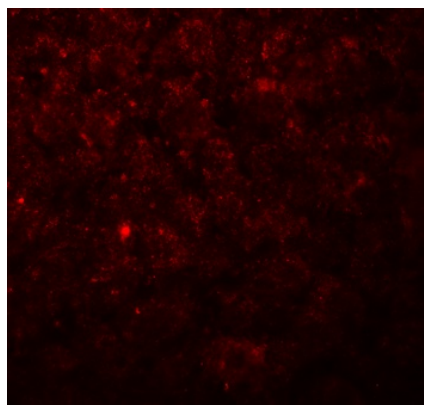
Phone: +1 (415) 906-5211 | Fax: +1 (415) 651-8558



Immunohistochemistry of Betatrophin in mouse liver tissue with Betatrophin antibody at 5 µg/mL.



Immunohistochemistry of Betatrophin in rat liver tissue with Betatrophin Antibody at 5 µg/mL.



Immunofluorescence of Betatrophin in rat liver tissue with Betatrophin Antibody at 20 µg/mL.

**Biorbyt Ltd.**

7 Signet Court, Swann Road  
Cambridge  
CB5 8LA  
United Kingdom

Email: [info@biorbyt.com](mailto:info@biorbyt.com), [support@biorbyt.com](mailto:support@biorbyt.com)

Phone: [+44 \(0\)1223 859353](tel:+44(0)1223859353) | Fax: [+1 \(415\) 651-8558](tel:+1(415)651-8558)

**Biorbyt LLC**

68 TW Alexander Drive  
Research Triangle Park  
Durham  
NC 27713  
United States

Email: [info@biorbyt.com](mailto:info@biorbyt.com), [support@biorbyt.com](mailto:support@biorbyt.com)

Phone: [+1 \(415\) 906-5211](tel:+1(415)906-5211) | Fax: [+1 \(415\) 651-8558](tel:+1(415)651-8558)