

Product Datasheet

SARS-CoV-2 (COVID-19) Envelope Antibody (HRP) (orb1239043)

Description	SARS-CoV-2 (COVID-19) Envelope Antibody (HRP)
Species/Host	Rabbit
Reactivity	Virus
Conjugation	HRP
Tested Applications	ELISA, IHC
Immunogen	Anti-SARS-CoV-2 (COVID-19, 2019-nCoV) Envelope antibody (HRP) (3531) was raised against a peptide corresponding to 10 amino acids near the amino terminus of SARS-CoV-2 (COVID-19, 2019-nCoV) Envelope protein. The immunogen is located within the first 50 amino acids of SARS-CoV-2 (COVID-19, 2019-nCoV) Envelope.
Target	E
Preservatives	SARS-CoV-2 (COVID-19) Envelope Antibody is supplied in PBS containing 0.02% sodium azide.
Form/Appearance	Liquid
Concentration	1 mg/mL
Storage	SARS-CoV-2 (COVID-19) Envelope antibody can be stored at 4 ° C for three months and -20 ° C, stable for up to one year. As with all antibodies care should be taken to avoid repeated freeze thaw cycles. Antibodies should not be exposed to prolonged high temperatures.
Note	For research use only
Application notes	IHC: 2 µg/mL Antibody validated: Immunohistochemistry in COVID-19 patient samples. All other applications and species not yet tested.

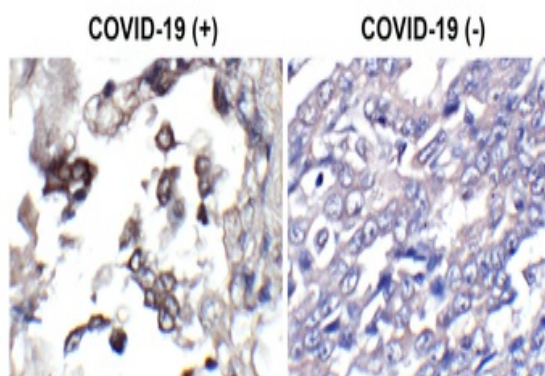
Biorbyt Ltd.

7 Signet Court, Swann's Road,
Cambridge, CB5 8LA, United Kingdom
Email: info@biorbyt.com, support@biorbyt.com
Phone: [+44 \(0\) 1223 859-353](tel:+441223859353) | Fax: [+1 \(415\) 651-8558](tel:+14156518558)

Biorbyt LLC.

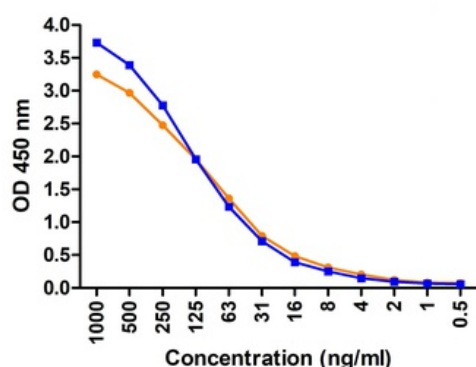
68 TW Alexander Drive,
Durham, NC, 27713, United States
Email: info@biorbyt.com, support@biorbyt.com
Phone: [+1 \(415\) 906-5211](tel:+14159065211) | Fax: [+1 \(415\) 651-8558](tel:+14156518558)

Isotype	IgG
Clonality	Polyclonal
Antibody Type	Primary Antibody
Uniprot ID	QHD43418
NCBI	QHD43418
Expiration Date	12 months from date of receipt.



Immunohistochemistry Validation of SARS-CoV-2 (COVID-19) Envelope Protein in COVID-19 Patient Lung.

Immunohistochemical analysis of paraffin-embedded COVID-19 patient lung tissue using anti- SARS-CoV-2 (COVID-19) envelope antibody (orb1239043, 2 ug/mL). Tissue was fixed with formaldehyde and blocked with 10% serum for 1 h at RT; antigen retrieval was by heat mediation with a citrate buffer (pH6). Samples were incubated with primary antibody overnight at 4 °C. Counter stained with Hematoxylin. Strong signal of SARS-COV-2 envelope protein was observed in macrophages of COVID-19 patient lung, but not in non-COVID-19 patient lung.



ELISA Validation. Coating Antigen: immunogen peptide, orb1236593, 10 ug/mL, incubate at 4 °C overnight. Detection Antibodies: SARS-CoV-2 Spike antibody, orb1239043 or orb1239971, dilution: 0.5-1000 ng/mL, incubate at RT for 1 hr. orb1239971 was detected by anti-rabbit HRP-conjugated secondary antibodies at 1:10000, incubate at RT for 1 hr.

Biorbyt Ltd.

7 Signet Court, Swann's Road,
Cambridge, CB5 8LA, United Kingdom
Email: info@biorbyt.com, support@biorbyt.com
Phone: [+44 \(0\) 1223 859-353](tel:+44201223859353) | Fax: [+1 \(415\) 651-8558](tel:+14156518558)

Biorbyt LLC.

68 TW Alexander Drive,
Durham, NC, 27713, United States
Email: info@biorbyt.com, support@biorbyt.com
Phone: [+1 \(415\) 906-5211](tel:+14159065211) | Fax: [+1 \(415\) 651-8558](tel:+14156518558)