

Product Datasheet

SARS-CoV-2 (COVID-19) Envelope Antibody (biotin) (orb1239041)

Catalog Number	orb1239041
Category	Antibodies
Description	SARS-CoV-2 (COVID-19) Envelope Antibody (biotin)
Target	E
Clonality	Polyclonal
Species/Host	Rabbit
Isotype	IgG
Conjugation	Biotin
Reactivity	Virus
Form/Appearance	Liquid
Concentration	1 mg/mL
Buffer/Preservatives	SARS-CoV-2 (COVID-19, 2019-nCoV) Envelope Antibody is supplied in PBS containing 0.02% sodium azide.
Purification	SARS-CoV-2 (COVID-19, 2019-nCoV) Envelope Antibody is affinity chromatography purified via peptide column.
Immunogen	Anti-SARS-CoV-2 (COVID-19, 2019-nCoV) Envelope antibody was raised against a peptide corresponding to 10 amino acids near the amino terminus of SARS-CoV-2 (COVID-19, 2019-nCoV) Envelope protein. The immunogen is located within the first 50 amino acids of SARS-CoV-2 (COVID-19, 2019-nCoV) Envelope.

Biorbyt Ltd.

7 Signet Court, Swann Road
Cambridge
CB5 8LA
United Kingdom

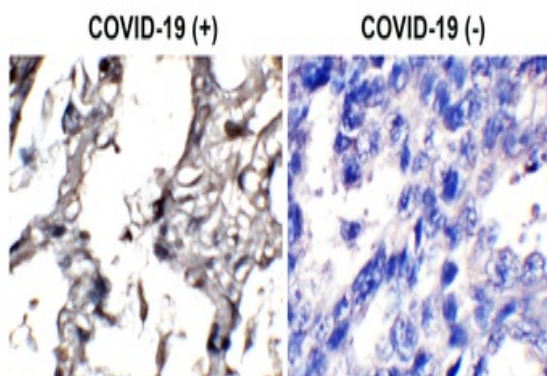
Email: info@biorbyt.com, support@biorbyt.com
Phone: [+44 \(0\)1223 859353](tel:+44(0)1223859353) | Fax: [+1 \(415\) 651-8558](tel:+1(415)651-8558)

Biorbyt LLC

68 TW Alexander Drive
Research Triangle Park
Durham
NC 27713
United States

Email: info@biorbyt.com, support@biorbyt.com
Phone: [+1 \(415\) 906-5211](tel:+1(415)906-5211) | Fax: [+1 \(415\) 651-8558](tel:+1(415)651-8558)

UniProt ID	QHD43418
Tested applications	ELISA, IHC
Application notes	IHC: 2 µg/mL Antibody validated: Immunohistochemistry in COVID-19 patient samples. All other applications and species not yet tested.
Antibody Type	Primary Antibody
Modifications	None
Storage	Maintain refrigerated at 2-8°C for up to 2 weeks. For long term storage store at -20°C in small aliquots to prevent freeze-thaw cycles.
Note	For research use only
NCBI	QHD43418
Expiration Date	12 months from date of receipt.



Immunohistochemistry Validation of SARS-CoV-2 (COVID-19) Envelope Protein in COVID-19 Patient Lung.
Immunohistochemical analysis of paraffin-embedded COVID-19 patient lung tissue using anti- SARS-CoV-2 (COVID-19) envelope antibody (orb1239043, 2 ug/mL). Tissue was fixed with formaldehyde and blocked with 10% serum for 1 h at RT; antigen retrieval was by heat mediation with a citrate buffer (pH6). Samples were incubated with primary antibody overnight at 4 °C, following by streptavidin-HRP conjugate at 20 ug/mL. Counter stained with Hematoxylin. Strong signal of SARS-COV-2 envelope protein was observed in macrophages of COVID-19 patient lung, but not in non-COVID-19 patient lung.

Biorbyt Ltd.

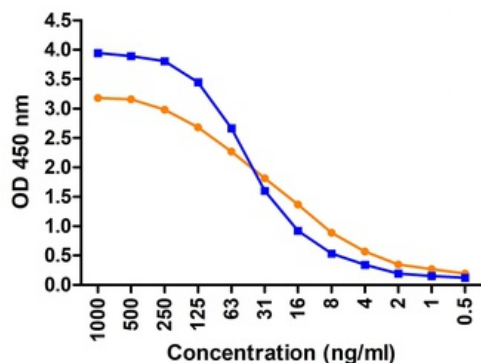
7 Signet Court, Swann Road
Cambridge
CB5 8LA
United Kingdom

Email: info@biorbyt.com, support@biorbyt.com
Phone: [+44 \(0\)1223 859353](tel:+44(0)1223859353) | Fax: [+1 \(415\) 651-8558](tel:+1(415)651-8558)

Biorbyt LLC

68 TW Alexander Drive
Research Triangle Park
Durham
NC 27713
United States

Email: info@biorbyt.com, support@biorbyt.com
Phone: [+1 \(415\) 906-5211](tel:+1(415)906-5211) | Fax: [+1 \(415\) 651-8558](tel:+1(415)651-8558)



ELISA Validation. Coating Antigen: immunogen peptide, orb1236593, 10 ug/mL, incubate at 4 °C overnight. Detection Antibodies: SARS-CoV-2 Spike antibody, orb1239041 or orb1239971, dilution: 0.5-1000 ng/mL, incubate at RT for 1 hr. orb1239041 was detected by HRP-conjugated streptavidin at 1:5000 and orb1239971 was detected by anti-rabbit HRP conjugated secondary antibodies at 1:10000, incubate at RT for 1 hr.

Biorbyt Ltd.

7 Signet Court, Swann Road
Cambridge
CB5 8LA
United Kingdom

Email: info@biorbyt.com, support@biorbyt.com
Phone: [+44 \(0\)1223 859353](tel:+44(0)1223859353) | Fax: [+1 \(415\) 651-8558](tel:+1(415)651-8558)

Biorbyt LLC

68 TW Alexander Drive
Research Triangle Park
Durham
NC 27713
United States

Email: info@biorbyt.com, support@biorbyt.com
Phone: [+1 \(415\) 906-5211](tel:+1(415)906-5211) | Fax: [+1 \(415\) 651-8558](tel:+1(415)651-8558)