

Product Datasheet

SIPA1L3 Antibody (orb1238968)

| | |
|-----------------------------|---|
| Catalog Number | orb1238968 |
| Category | Antibodies |
| Description | SIPA1L3 Antibody |
| Target | SIPA1L3 |
| Clonality | Polyclonal |
| Species/Host | Rabbit |
| Isotype | IgG |
| Conjugation | Unconjugated |
| Reactivity | Human, Mouse, Rat |
| Form/Appearance | Liquid |
| Concentration | 1 mg/mL |
| Buffer/Preservatives | SIPA1L3 Antibody is supplied in PBS containing 0.02% sodium azide. |
| Purification | SIPA1L3 Antibody is affinity chromatography purified via peptide column. |
| Immunogen | SIPA1L3 antibody was raised against a 15 amino acid synthetic peptide from near the amino terminus of human SIPA1L3. The immunogen is located within amino acids 80 - 130 of SIPA1L3. |
| UniProt ID | O60292 |
| Tested applications | ELISA, IF, IHC-P, WB |

Biorbyt Ltd.

7 Signet Court, Swann Road
Cambridge
CB5 8LA
United Kingdom

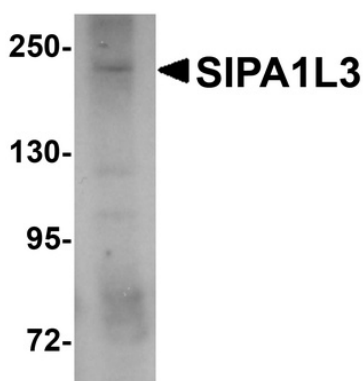
Email: info@biorbyt.com, support@biorbyt.com
Phone: [+44 \(0\)1223 859353](tel:+44(0)1223859353) | Fax: [+1 \(415\) 651-8558](tel:+1(415)651-8558)

Biorbyt LLC

68 TW Alexander Drive
Research Triangle Park
Durham
NC 27713
United States

Email: info@biorbyt.com, support@biorbyt.com
Phone: [+1 \(415\) 906-5211](tel:+1(415)906-5211) | Fax: [+1 \(415\) 651-8558](tel:+1(415)651-8558)

| | |
|--------------------------|---|
| Application notes | SIPA1L3 antibody can be used for detection of SIPA1L3 by Western blot at 1 $\mu\text{g}/\text{mL}$. Antibody can also be used for immunohistochemistry starting at 5 $\mu\text{g}/\text{mL}$. For immunofluorescence start at 20 $\mu\text{g}/\text{mL}$. Antibody validated: Western Blot in human samples; Immunohistochemistry in human samples and Immunofluorescence in human samples. All other applications and species not yet tested. |
| Antibody Type | Primary Antibody |
| Modifications | None |
| Storage | Maintain refrigerated at 2-8°C for up to 2 weeks. For long term storage store at -20°C in small aliquots to prevent freeze-thaw cycles. |
| Note | For research use only |
| NCBI | NP_055888 |
| Expiration Date | 12 months from date of receipt. |



Western blot analysis of SIPA1L3 in SK-N-SH lysate with SIPA1L3 antibody at 1 $\mu\text{g}/\text{mL}$.

Biorbyt Ltd.

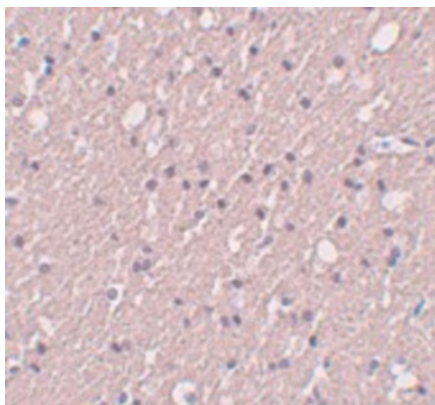
7 Signet Court, Swann Road
Cambridge
CB5 8LA
United Kingdom

Email: info@biorbyt.com, support@biorbyt.com
Phone: [+44 \(0\)1223 859353](tel:+44(0)1223859353) | Fax: [+1 \(415\) 651-8558](tel:+1(415)651-8558)

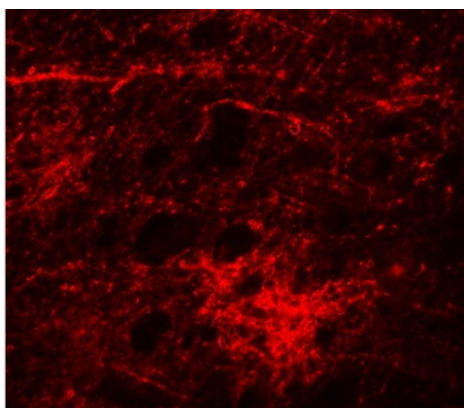
Biorbyt LLC

68 TW Alexander Drive
Research Triangle Park
Durham
NC 27713
United States

Email: info@biorbyt.com, support@biorbyt.com
Phone: [+1 \(415\) 906-5211](tel:+1(415)906-5211) | Fax: [+1 \(415\) 651-8558](tel:+1(415)651-8558)



Immunohistochemistry of SIPA1L3 in human brain tissue with SIPA1L3 antibody at 5 µg/mL.



Immunofluorescence of SIPA1L3 in Human Brain cells with SIPA1L3 antibody at 20 µg/mL.

Biorbyt Ltd.

7 Signet Court, Swann Road
Cambridge
CB5 8LA
United Kingdom

Email: info@biorbyt.com, support@biorbyt.com

Phone: [+44 \(0\)1223 859353](tel:+44(0)1223859353) | Fax: [+1 \(415\) 651-8558](tel:+1(415)651-8558)

Biorbyt LLC

68 TW Alexander Drive
Research Triangle Park
Durham
NC 27713
United States

Email: info@biorbyt.com, support@biorbyt.com

Phone: [+1 \(415\) 906-5211](tel:+1(415)906-5211) | Fax: [+1 \(415\) 651-8558](tel:+1(415)651-8558)