

Product Datasheet

GFRA1 Antibody (orb1238923)

Catalog Number	orb1238923
Category	Antibodies
Description	GFRA1 Antibody
Target	GFRA1
Clonality	Polyclonal
Species/Host	Rabbit
Isotype	IgG
Conjugation	Unconjugated
Reactivity	Human, Mouse, Rat
Form/Appearance	Liquid
Concentration	1 mg/mL
Buffer/Preservatives	GFRA1 Antibody is supplied in PBS containing 0.02% sodium azide.
Purification	GFRA1 Antibody is affinity chromatography purified via peptide column.
Immunogen	GFRA1 antibody was raised against a 14 amino acid peptide near the center of human GFRA1. The immunogen is located within amino acids 360 - 410 of GFRA1.
UniProt ID	P56159
MW	51 kDa
Tested applications	ELISA, IF, IHC-P, WB

Biorbyt Ltd.

7 Signet Court, Swann Road
Cambridge
CB5 8LA
United Kingdom

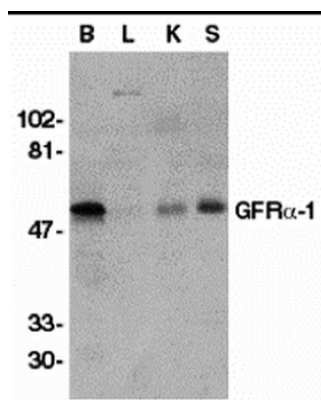
Email: info@biorbyt.com, support@biorbyt.com
Phone: [+44 \(0\)1223 859353](tel:+44(0)1223859353) | Fax: [+1 \(415\) 651-8558](tel:+1(415)651-8558)

Biorbyt LLC

68 TW Alexander Drive
Research Triangle Park
Durham
NC 27713
United States

Email: info@biorbyt.com, support@biorbyt.com
Phone: [+1 \(415\) 906-5211](tel:+1(415)906-5211) | Fax: [+1 \(415\) 651-8558](tel:+1(415)651-8558)

Application notes	GFR alpha 1 antibody can be used for detection of GFR alpha 1 by Western blot at 1 µg/mL. Antibody can also be used for immunohistochemistry starting at 1 µg/mL. Antibody validated: Western Blot in human samples; Immunohistochemistry in human samples and Immunofluorescence in human samples. All other applications and species not yet tested.
Specificity	GFR alpha 1 antibody is predicted to not cross-react with other members of the GFR alpha family of proteins.
Antibody Type	Primary Antibody
Modifications	None
Storage	Maintain refrigerated at 2-8°C for up to 2 weeks. For long term storage store at -20°C in small aliquots to prevent freeze-thaw cycles.
Note	For research use only
NCBI	P56159
Expiration Date	12 months from date of receipt.



Western blot analysis of GFR alpha 1 in crude membrane fractions of human brain (B), liver (L), kidney (K), and spleen (S), respectively, with GFR alpha 1 antibody at 1 µg/mL.

Biorbyt Ltd.

7 Signet Court, Swann Road
Cambridge
CB5 8LA
United Kingdom

Email: info@biorbyt.com, support@biorbyt.com

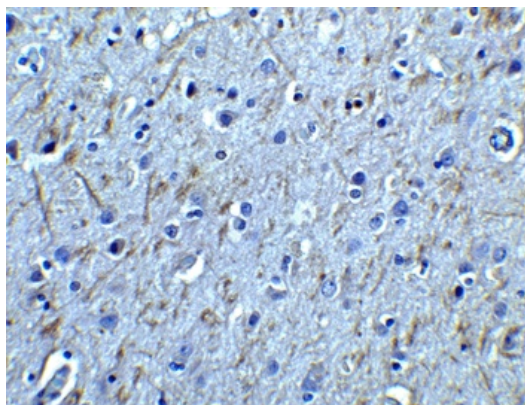
Phone: +44 (0)1223 859353 | Fax: +1 (415) 651-8558

Biorbyt LLC

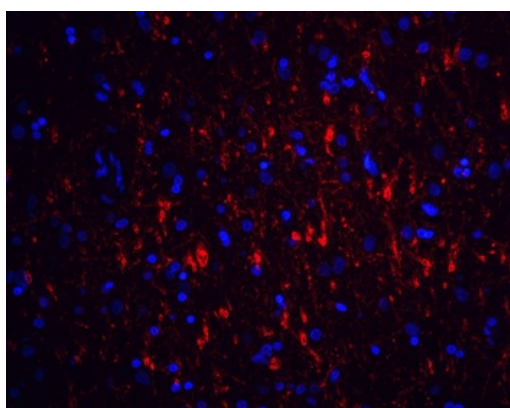
68 TW Alexander Drive
Research Triangle Park
Durham
NC 27713
United States

Email: info@biorbyt.com, support@biorbyt.com

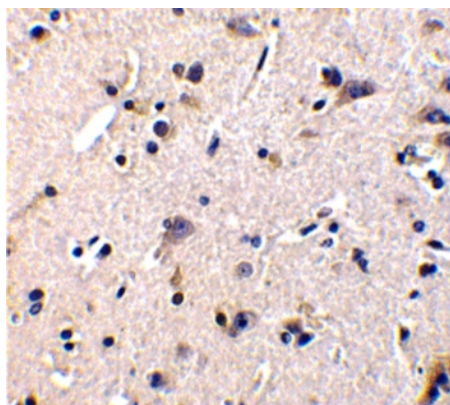
Phone: +1 (415) 906-5211 | Fax: +1 (415) 651-8558



Immunohistochemistry of GFR alpha 1 in human brain tissue with GFR alpha 1 antibody at 2.5 µg/ml.



Immunofluorescence of GFR alpha 1 in human brain tissue with GFR alpha 1 antibody at 20 µg/mL. Red: GFR alpha 1 Antibody (orb1238923) Blue: DAPI staining.



Immunohistochemistry of GFR alpha 1 in human brain tissue with GFR alpha 1 antibody at 1 µg/mL.

Biorbyt Ltd.

7 Signet Court, Swann Road
Cambridge
CB5 8LA
United Kingdom

Email: info@biorbyt.com, support@biorbyt.com

Phone: [+44 \(0\)1223 859353](tel:+44(0)1223859353) | Fax: [+1 \(415\) 651-8558](tel:+1(415)651-8558)

Biorbyt LLC

68 TW Alexander Drive
Research Triangle Park
Durham
NC 27713
United States

Email: info@biorbyt.com, support@biorbyt.com

Phone: [+1 \(415\) 906-5211](tel:+1(415)906-5211) | Fax: [+1 \(415\) 651-8558](tel:+1(415)651-8558)