

## Product Datasheet

# SARS-CoV-2 (COVID-19) Envelope Antibody (orb1238718)

<b>Catalog Number</b>	orb1238718
<b>Category</b>	Antibodies
<b>Description</b>	SARS-CoV-2 (COVID-19) Envelope Antibody
<b>Target</b>	E
<b>Clonality</b>	Polyclonal
<b>Species/Host</b>	Rabbit
<b>Isotype</b>	IgG
<b>Conjugation</b>	Unconjugated
<b>Reactivity</b>	Virus
<b>Form/Appearance</b>	Liquid
<b>Concentration</b>	1 mg/mL
<b>Buffer/Preservatives</b>	SARS-CoV-2 (COVID-19) Envelope Antibody is supplied in PBS containing 0.02% sodium azide.
<b>Purification</b>	SARS-CoV-2 (COVID-19) Envelope Antibody is affinity chromatography purified via peptide column.
<b>Immunogen</b>	Anti-SARS-CoV-2 (COVID-19) Envelope antibody (orb1238718) was raised against a peptide corresponding to 14 amino acids near the carboxyl terminus of SARS-CoV-2 (COVID-19) Envelope protein. The immunogen is located within the last 50 amino acids of SARS-CoV-2 (COVID-19) Envelope protein.

**Biorbyt Ltd.**

7 Signet Court, Swann Road  
Cambridge  
CB5 8LA  
United Kingdom

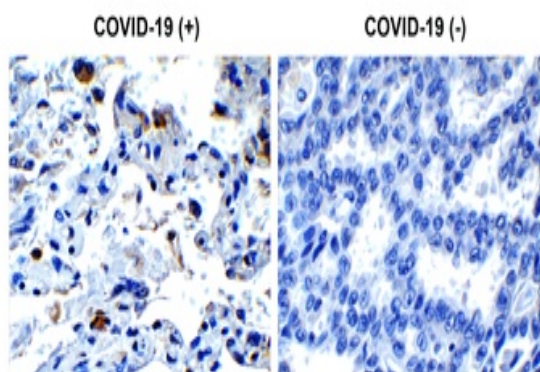
Email: [info@biorbyt.com](mailto:info@biorbyt.com), [support@biorbyt.com](mailto:support@biorbyt.com)  
Phone: [+44 \(0\)1223 859353](tel:+44(0)1223859353) | Fax: [+1 \(415\) 651-8558](tel:+1(415)651-8558)

**Biorbyt LLC**

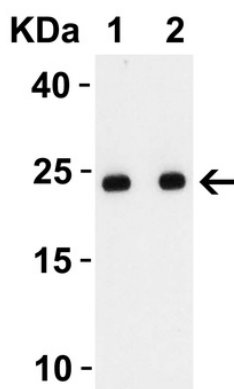
68 TW Alexander Drive  
Research Triangle Park  
Durham  
NC 27713  
United States

Email: [info@biorbyt.com](mailto:info@biorbyt.com), [support@biorbyt.com](mailto:support@biorbyt.com)  
Phone: [+1 \(415\) 906-5211](tel:+1(415)906-5211) | Fax: [+1 \(415\) 651-8558](tel:+1(415)651-8558)

<b>UniProt ID</b>	QHD43418
<b>Tested applications</b>	ELISA, IHC, WB
<b>Antibody Type</b>	Primary Antibody
<b>Storage</b>	Maintain refrigerated at 2-8°C for up to 2 weeks. For long term storage store at -20°C in small aliquots to prevent freeze-thaw cycles.
<b>Note</b>	For research use only
<b>NCBI</b>	<b>QHD43418</b>
<b>Expiration Date</b>	12 months from date of receipt.



Immunohistochemistry Validation of SARS-CoV-2 (COVID-19) Envelope in COVID-19 Patient Lung. Immunohistochemical analysis of paraffin-embedded COVID-19 patient lung tissue using anti-SARS-CoV-2 (COVID-19) Envelope antibody (orb1238718, 0.5 µg/mL). Tissue was fixed with formaldehyde and blocked with 10% serum for 1 h at RT; antigen retrieval was by heat mediation with a citrate buffer (pH6). Samples were incubated with primary antibody overnight at 4 °C. A goat anti-rabbit IgG H&L (HRP) at 1/250 was used as secondary. Counter stained with Hematoxylin. Strong signal of SARS-COV-2 envelope protein was observed in macrophage of COVID-19 patient lung, but not in non-COVID-19 patient lung.



Western Blot Validation with SARS-CoV-2 Envelope Recombinant Protein. Loading: 50 ng per lane of SARS-CoV-2 Envelope recombinant protein (orb1228241). Antibodies: SARS-CoV-2 (COVID-19) Envelope, orb1238718, 1 h incubation at RT in 5% NFDN/TBST. Secondary: Goat anti-rabbit IgG HRP conjugate at 1:10000 dilution. Lane 1: 1 µg/mL and. Lane 2: 2 µg/mL.

**Biorbyt Ltd.**

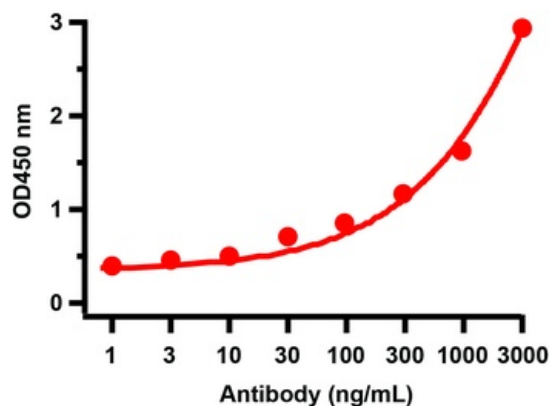
7 Signet Court, Swann Road  
Cambridge  
CB5 8LA  
United Kingdom

Email: [info@biorbyt.com](mailto:info@biorbyt.com), [support@biorbyt.com](mailto:support@biorbyt.com)  
Phone: +44 (0)1223 859353 | Fax: +1 (415) 651-8558

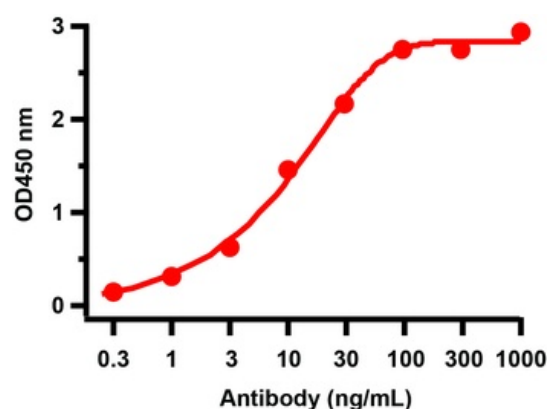
**Biorbyt LLC**

68 TW Alexander Drive  
Research Triangle Park  
Durham  
NC 27713  
United States

Email: [info@biorbyt.com](mailto:info@biorbyt.com), [support@biorbyt.com](mailto:support@biorbyt.com)  
Phone: +1 (415) 906-5211 | Fax: +1 (415) 651-8558



ELISA Validation with SARS-CoV-2 Envelope Recombinant Protein. Antibodies: SARS-CoV-2 (COVID-19) Envelope Antibody, orb1238718. A direct ELISA was performed using SARS-CoV-2 Envelope recombinant protein (orb1228241) as coating antigen and the anti-SARS-CoV-2 (COVID-19) Envelope antibody as the capture antibody. Secondary: Goat anti-rabbit IgG HRP conjugate at 1:20000 dilution. Detection range is from 1 ng/mL to 3000 ng/mL.



ELISA Validation. Antibodies: SARS-CoV-2 (COVID-19) Envelope Antibody, orb1238718. A direct ELISA was performed using immunogen peptide (orb1236593) as coating antigen and the anti-SARS-CoV-2 (COVID-19) Envelope antibody as the capture antibody. Secondary: Goat anti-rabbit IgG HRP conjugate at 1:20000 dilution. Detection range is from 0.3 ng/mL to 1000 ng/mL.

**Biorbyt Ltd.**

7 Signet Court, Swann Road  
Cambridge  
CB5 8LA  
United Kingdom

Email: [info@biorbyt.com](mailto:info@biorbyt.com), [support@biorbyt.com](mailto:support@biorbyt.com)  
Phone: +44 (0)1223 859353 | Fax: +1 (415) 651-8558

**Biorbyt LLC**

68 TW Alexander Drive  
Research Triangle Park  
Durham  
NC 27713  
United States

Email: [info@biorbyt.com](mailto:info@biorbyt.com), [support@biorbyt.com](mailto:support@biorbyt.com)  
Phone: +1 (415) 906-5211 | Fax: +1 (415) 651-8558