

Product Datasheet

Lirilumab (KIRD2 subgroup) - Research Grade Biosimilar Antibody (orb1237572)

Catalog Number	orb1237572
Category	Antibodies
Description	Lirilumab (KIRD2 subgroup) - Research Grade Biosimilar Antibody
Clonality	Recombinant
Isotype	IgG4-kappa
Conjugation	Unconjugated
Concentration	batch dependent
Buffer/Preservatives	PBS buffer pH 7.5
Purification	>95%
Immunogen	Homo sapiens / KIRD2 subgroup [Homo sapiens]
Antibody Type	Primary Antibody
Source	CHO cells
Modifications	None
Storage	Maintain refrigerated at 2-8°C for up to 2 weeks. For long term storage store at -20°C in small aliquots to prevent freeze-thaw cycles.
Note	For research use only
Expiration Date	12 months from date of receipt.

Biorbyt Ltd.

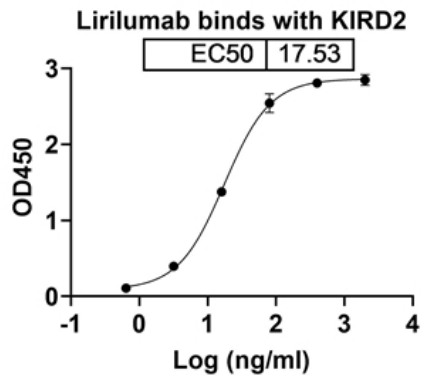
7 Signet Court, Swann Road
Cambridge
CB5 8LA
United Kingdom

Email: info@biorbyt.com, support@biorbyt.com
Phone: [+44 \(0\)1223 859353](tel:+44(0)1223859353) | Fax: [+1 \(415\) 651-8558](tel:+1(415)651-8558)

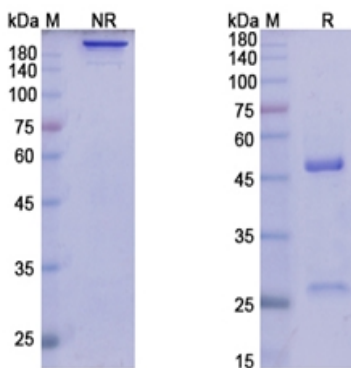
Biorbyt LLC

68 TW Alexander Drive
Research Triangle Park
Durham
NC 27713-2847
United States

Email: info@biorbyt.com, support@biorbyt.com
Phone: [+1 \(415\) 906-5211](tel:+1(415)906-5211) | Fax: [+1 \(415\) 651-8558](tel:+1(415)651-8558)



Lirilumab binds with KIRD2



SDS-PAGE Image

Biorbyt Ltd.

7 Signet Court, Swann Road
Cambridge
CB5 8LA
United Kingdom

Email: info@biorbyt.com, support@biorbyt.com

Phone: +44 (0)1223 859353 | Fax: +1 (415) 651-8558

Biorbyt LLC

68 TW Alexander Drive
Research Triangle Park
Durham
NC 27713-2847
United States

Email: info@biorbyt.com, support@biorbyt.com

Phone: +1 (415) 906-5211 | Fax: +1 (415) 651-8558