

## Product Datasheet

# Siplizumab (CD2/LFA-2) - Research Grade Biosimilar Antibody (orb1237364)

<b>Catalog Number</b>	orb1237364
<b>Category</b>	Antibodies
<b>Description</b>	Siplizumab (CD2/LFA-2) - Research Grade Biosimilar Antibody
<b>Clonality</b>	Recombinant
<b>Isotype</b>	IgG1-kappa
<b>Conjugation</b>	Unconjugated
<b>Concentration</b>	batch dependent
<b>Buffer/Preservatives</b>	PBS buffer pH 7.5
<b>Purification</b>	>95%
<b>Immunogen</b>	Humanized / CD2/LFA-2 [Homo sapiens]
<b>UniProt ID</b>	<b>Q53F96, P06729</b>
<b>Antibody Type</b>	Primary Antibody
<b>Source</b>	CHO cells
<b>Modifications</b>	None
<b>Storage</b>	Maintain refrigerated at 2-8°C for up to 2 weeks. For long term storage store at -20°C in small aliquots to prevent freeze-thaw cycles.
<b>Note</b>	For research use only

### Biorbyt Ltd.

7 Signet Court, Swann Road  
Cambridge  
CB5 8LA  
United Kingdom

Email: [info@biorbyt.com](mailto:info@biorbyt.com), [support@biorbyt.com](mailto:support@biorbyt.com)  
Phone: [+44 \(0\)1223 859353](tel:+44(0)1223859353) | Fax: [+1 \(415\) 651-8558](tel:+1(415)651-8558)

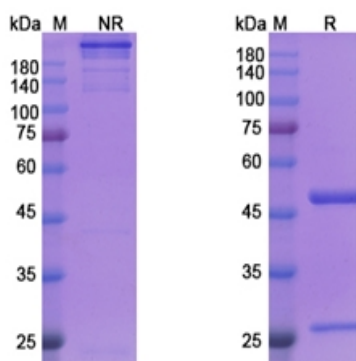
### Biorbyt LLC

68 TW Alexander Drive  
Research Triangle Park  
Durham  
NC 27713-2847  
United States

Email: [info@biorbyt.com](mailto:info@biorbyt.com), [support@biorbyt.com](mailto:support@biorbyt.com)  
Phone: [+1 \(415\) 906-5211](tel:+1(415)906-5211) | Fax: [+1 \(415\) 651-8558](tel:+1(415)651-8558)

**Expiration Date**

12 months from date of receipt.



SDS-PAGE Image

**Biorbyt Ltd.**

7 Signet Court, Swann Road  
Cambridge  
CB5 8LA  
United Kingdom

Email: [info@biorbyt.com](mailto:info@biorbyt.com), [support@biorbyt.com](mailto:support@biorbyt.com)

Phone: [+44 \(0\)1223 859353](tel:+44(0)1223859353) | Fax: [+1 \(415\) 651-8558](tel:+1(415)651-8558)

**Biorbyt LLC**

68 TW Alexander Drive  
Research Triangle Park  
Durham  
NC 27713-2847  
United States

Email: [info@biorbyt.com](mailto:info@biorbyt.com), [support@biorbyt.com](mailto:support@biorbyt.com)

Phone: [+1 \(415\) 906-5211](tel:+1(415)906-5211) | Fax: [+1 \(415\) 651-8558](tel:+1(415)651-8558)