

Product Datasheet

Human ACE2 Recombinant Protein (orb1231610)

Catalog Number	orb1231610
Category	Proteins
Description	Human ACE2 Recombinant Protein
Target	ACE2
Tag	His, Avi tag at the C-terminus
Form/Appearance	Lyophilized
Buffer/Preservatives	PBS, pH 7.4
Purity	> 95% by SDS-PAGE.
Protein Sequence	Gln18- Ser740
UniProt ID	Q9BYF1
MW	86.2 kDa
Tested applications	ELISA, WB
Application notes	This recombinant protein can be used for SDS-PAGE.
Source	HEK293 cells
Biological Activity	Measured by its binding ability in a functional ELISA. Immobilized Recombinant Human ACE2-His at 2µg/mL (100 µL/well) can bind Recombinant 2019-nCoV Spike S1 with a linear range of 1.5-104.5ng/mL.
Storage	Store the lyophilized protein at -20°C to -80°C for long term. After reconstitution, the protein solution is stable at -20°C for 3 months, at 2-8°C for up to 1 week.

Biorbyt Ltd.

7 Signet Court, Swann Road
Cambridge
CB5 8LA
United Kingdom

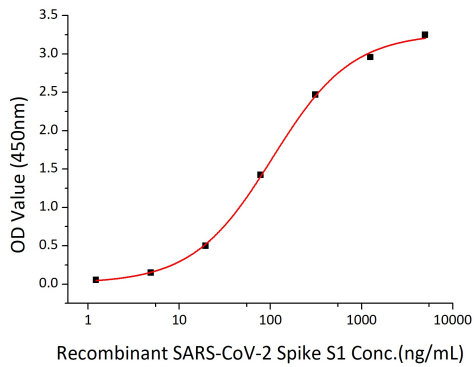
Email: info@biorbyt.com, support@biorbyt.com
Phone: [+44 \(0\)1223 859353](tel:+44(0)1223859353) | Fax: [+1 \(415\) 651-8558](tel:+1(415)651-8558)

Biorbyt LLC

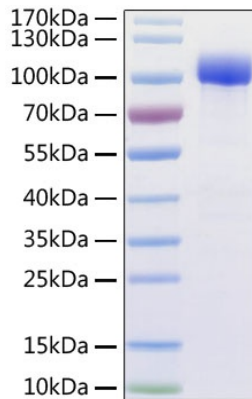
68 TW Alexander Drive
Research Triangle Park
Durham
NC 27713-2847
United States

Email: info@biorbyt.com, support@biorbyt.com
Phone: [+1 \(415\) 906-5211](tel:+1(415)906-5211) | Fax: [+1 \(415\) 651-8558](tel:+1(415)651-8558)

Note	For research use only
NCBI	Q9BYF1
Expiration Date	6 months from date of receipt.



Immobilized human ACE2 recombinant protein at 2 μ g/mL (100 μ L/well) can bind recombinant SARS-CoV-2 (COVID-19) spike S1 with a linear range of 1.5-104.5ng/mL.



Human ACE2 recombinant protein was determined by SDS-PAGE with Coomassie Blue, showing a band at 95-110 kD.

Biorbyt Ltd.

7 Signet Court, Swann Road
Cambridge
CB5 8LA
United Kingdom

Email: info@biorbyt.com, support@biorbyt.com

Phone: +44 (0)1223 859353 | Fax: +1 (415) 651-8558

Biorbyt LLC

68 TW Alexander Drive
Research Triangle Park
Durham
NC 27713-2847
United States

Email: info@biorbyt.com, support@biorbyt.com

Phone: +1 (415) 906-5211 | Fax: +1 (415) 651-8558