

Product Datasheet

Human ACE2 Recombinant Protein (orb1231599)

Catalog Number	orb1231599
Category	Proteins
Description	Human ACE2 Recombinant Protein
Tag	Fc-Avi Tag
Form/Appearance	Lyophilized
Buffer/Preservatives	20mM PB (pH 7.4). 5 % trehalose is added as protectant before lyophilization.
Purity	> 95% as determined by Bis-Tris PAGE; > 95% as determined by HPLC
Protein Sequence	Gln18- Ser740
MW	Predicted: 111.2kD Observed: 115-125kD due to glycosylation
Tested applications	ELISA, WB
Application notes	SDS-PAGE
Source	HEK293 cells
Storage	Store in working aliquots at -20°C. Avoid freeze/thaw cycles.
Note	For research use only
NCBI	Q9BYF1
Expiration Date	6 months from date of receipt.

Biorbyt Ltd.

7 Signet Court, Swann Road
Cambridge
CB5 8LA
United Kingdom

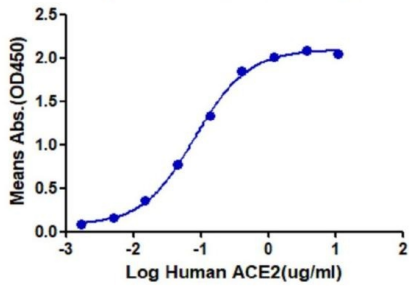
Email: info@biorbyt.com, support@biorbyt.com
Phone: [+44 \(0\)1223 859353](tel:+44(0)1223859353) | Fax: [+1 \(415\) 651-8558](tel:+1(415)651-8558)

Biorbyt LLC

68 TW Alexander Drive
Research Triangle Park
Durham
NC 27713-2847
United States

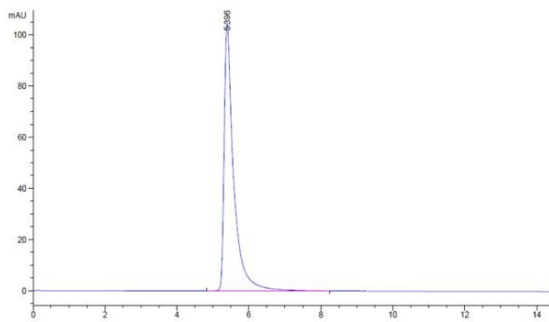
Email: info@biorbyt.com, support@biorbyt.com
Phone: [+1 \(415\) 906-5211](tel:+1(415)906-5211) | Fax: [+1 \(415\) 651-8558](tel:+1(415)651-8558)

Biotinylated nCov-S1, His Tag ELISA



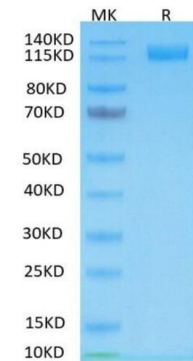
Standard curve for orb1231599 ELISA kit.

Immobilized biotinylated n-COV S1, His Tag at 1ug/ml (100ul/Well). Dose response curve for ACE2, Fc Tag with the EC50 of 81ng/ml determined by ELISA.



HPLC analysis of orb1231599.

The purity of human ACE2 is greater than 95% as determined by SEC-HPLC



Recombinant human ACE2 on Tris-Bis PAGE under reduced condition. The purity is greater than 95%.

SDS-PAGE gel analysis of orb1231599.

Biorbyt Ltd.

7 Signet Court, Swann Road
Cambridge
CB5 8LA
United Kingdom

Email: info@biorbyt.com, support@biorbyt.com
Phone: +44 (0)1223 859353 | Fax: +1 (415) 651-8558

Biorbyt LLC

68 TW Alexander Drive
Research Triangle Park
Durham
NC 27713-2847
United States

Email: info@biorbyt.com, support@biorbyt.com
Phone: +1 (415) 906-5211 | Fax: +1 (415) 651-8558