

## Product Datasheet

# SARS-CoV-2 (COVID-19) Spike RBD + SD1 +SD2 Recombinant Protein (orb1231586)

<b>Catalog Number</b>	orb1231586
<b>Category</b>	Proteins
<b>Description</b>	SARS-CoV-2 (COVID-19) Spike RBD + SD1 +SD2 Recombinant Protein
<b>Tag</b>	His tag at C-terminus
<b>Form/Appearance</b>	Liquid
<b>Concentration</b>	1 mg/mL
<b>Buffer/Preservatives</b>	PBS
<b>Purity</b>	95%
<b>Protein Sequence</b>	Glu309-Ala684
<b>MW</b>	42.9 kD
<b>Tested applications</b>	ELISA, WB
<b>Source</b>	HEK293 cells
<b>Storage</b>	The protein is stable in a liquid state at -70°C for 12 months. Avoid repeated freeze-thaw cycles.
<b>Dry Ice Shipping</b>	<b>Please note: This product requires shipment on dry ice. A dry ice surcharge will apply.</b>
<b>Note</b>	For research use only
<b>Expiration Date</b>	6 months from date of receipt.

### Biorbyt Ltd.

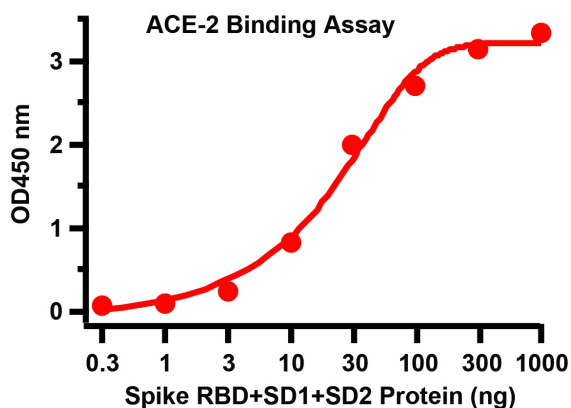
7 Signet Court, Swann Road  
Cambridge  
CB5 8LA  
United Kingdom

Email: [info@biorbyt.com](mailto:info@biorbyt.com), [support@biorbyt.com](mailto:support@biorbyt.com)  
Phone: [+44 \(0\)1223 859353](tel:+44(0)1223859353) | Fax: [+1 \(415\) 651-8558](tel:+1(415)651-8558)

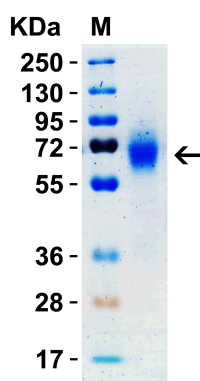
### Biorbyt LLC

68 TW Alexander Drive  
Research Triangle Park  
Durham  
NC 27713  
United States

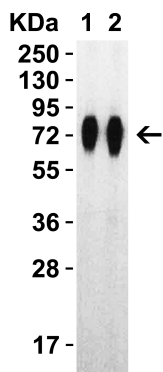
Email: [info@biorbyt.com](mailto:info@biorbyt.com), [support@biorbyt.com](mailto:support@biorbyt.com)  
Phone: [+1 \(415\) 906-5211](tel:+1(415)906-5211) | Fax: [+1 \(415\) 651-8558](tel:+1(415)651-8558)



Binding Assay of ACE2 and SARS-CoV-2 (COVID-19) Spike RBD + SD1 + SD2 Recombinant Protein, Coating: SARS-CoV-2 (COVID-19) Spike RBD + SD1 + SD2 recombinant protein (orb1231586) from 0.3 ng to 1000 ng. Capture: ACE2 recombinant protein, orb1231604 (0.5 µg/mL). Secondary: Goat anti-human IgG HRP conjugate at 1:10000 dilution.



SDS-PAGE Validation with SARS-CoV-2 (COVID-19) Spike RBD + SD1 + SD2 Recombinant Protein. Loading: 1 µg SARS-CoV-2 (COVID-19) Spike RBD + SD1 + SD2 recombinant protein, orb1231586. Observed: 70kD



Western Blot Validation with SARS-CoV-2 (COVID-19) Spike RBD + SD1 + SD2 Recombinant Protein. Loading: 30 ng per lane of SARS-CoV-2 (COVID-19) Spike RBD + SD1 + SD2 recombinant protein, orb1231586. Antibodies: SARS-CoV-2 (COVID-19) Spike RBD, orb1239994, 1h incubation at RT in 5% NFDm/TBST. Secondary: Goat anti-rabbit IgG HRP conjugate at 1:10000 dilution. Lane 1: 1 µg/mL and Lane 2: 2 µg/mL.

**Biorbyt Ltd.**

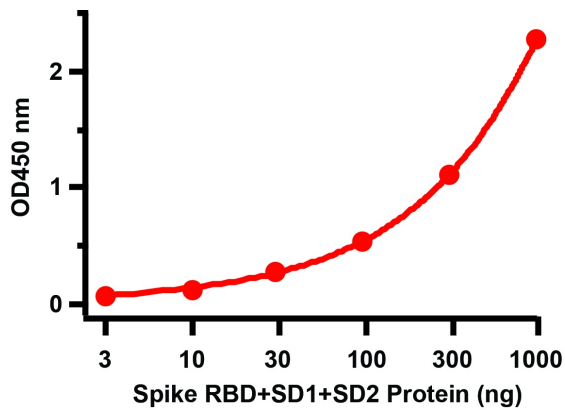
7 Signet Court, Swann Road  
Cambridge  
CB5 8LA  
United Kingdom

Email: [info@biorbyt.com](mailto:info@biorbyt.com), [support@biorbyt.com](mailto:support@biorbyt.com)  
Phone: +44 (0)1223 859353 | Fax: +1 (415) 651-8558

**Biorbyt LLC**

68 TW Alexander Drive  
Research Triangle Park  
Durham  
NC 27713  
United States

Email: [info@biorbyt.com](mailto:info@biorbyt.com), [support@biorbyt.com](mailto:support@biorbyt.com)  
Phone: +1 (415) 906-5211 | Fax: +1 (415) 651-8558



ELISA Validation of SARS-CoV-2 (COVID-19) Spike RBD + SD1 + SD2 Recombinant Protein. Coating Antigen: SARS-CoV-2 (COVID-19) Spike RBD + SD1 + SD2 recombinant protein (orb1231586) from 0.3 ng to 1000 ng. Capture Antibody: SARS-CoV-2 (COVID-19) Spike RBD antibody, orb1239994 (1 µg/mL). Secondary: Goat anti-rabbit IgG HRP conjugate at 1:20000 dilution.

**Biorbyt Ltd.**

7 Signet Court, Swann Road  
Cambridge  
CB5 8LA  
United Kingdom

Email: [info@biorbyt.com](mailto:info@biorbyt.com), [support@biorbyt.com](mailto:support@biorbyt.com)

Phone: [+44 \(0\)1223 859353](tel:+44(0)1223859353) | Fax: [+1 \(415\) 651-8558](tel:+1(415)651-8558)

**Biorbyt LLC**

68 TW Alexander Drive  
Research Triangle Park  
Durham  
NC 27713  
United States

Email: [info@biorbyt.com](mailto:info@biorbyt.com), [support@biorbyt.com](mailto:support@biorbyt.com)

Phone: [+1 \(415\) 906-5211](tel:+1(415)906-5211) | Fax: [+1 \(415\) 651-8558](tel:+1(415)651-8558)