

## Product Datasheet

# SARS-CoV-2 (COVID-19) NSP8 Recombinant Protein (orb1231057)

<b>Catalog Number</b>	orb1231057
<b>Category</b>	Proteins
<b>Description</b>	SARS-CoV-2 (COVID-19) NSP8 Recombinant Protein
<b>Target</b>	ORF1ab
<b>Tag</b>	N-Term GST Uncleaved
<b>Form/Appearance</b>	Liquid
<b>Concentration</b>	batch dependent
<b>Buffer/Preservatives</b>	50 mM Tris-HCl pH 7.5, 270 mM Sucrose, 150 mM NaCl, 0.1 mM EGTA, 0.1 % 2-mercaptoethanol, 0.03 % Brij-35
<b>Purity</b>	GSH-Agarose (0.95)
<b>Protein Sequence</b>	Native Sequence: MSPILGYWKIKGLVQPTRLLEYLEEKYEEHLYERDEGDKWRNKKFELGLEFPN LPYYIDGDVKLTSMAIIRYIADKHNMLGGCPKERAEISMLEGAVLDIRYGVSRIAYSKDFETL KVDFLSKLPEMLKMFEDRLCHKTYLNGDHVTHPDFMLYDALDVVLYMDPMCLDAFPKLV FKKRIEAIPIQIDKYLKSSKYIAWPLQGWQATFGGGDHPKSDLEVLVFGGPLGSAIASEFSSLP SYAAFATAQEAYEQAVANGDSEVVLLKLLKSLNVAKSEFDRDAAMQRKLEKMADQAMTQ MYKQARSEDKRAKVTSAMQTMFLTMLRKLNDALNIIINNARDGCVPLNIIPLTTAAKLMV VIPDYNTYKNTCDGTTFTYASALWEIQVVDADSKIVQLSEISMDNSPNLAWPLIVTALRAN SAVKLQ Amino acids A1 - Q198 (end). Residue A232 of the fusion protein is equivalent to A1 of the native enzyme. The GST tag is located at residues 1 - 220. Protease Cleavage: PreScission (LEVLVFGP) residues 221 - 228
<b>UniProt ID</b>	<b>P0DTC1</b>

**Biorbyt Ltd.**

7 Signet Court, Swann Road  
Cambridge  
CB5 8LA  
United Kingdom

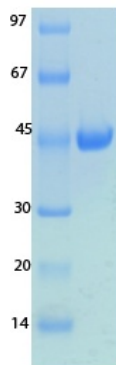
Email: [info@biorbyt.com](mailto:info@biorbyt.com), [support@biorbyt.com](mailto:support@biorbyt.com)  
Phone: [+44 \(0\)1223 859353](tel:+44(0)1223859353) | Fax: [+1 \(415\) 651-8558](tel:+1(415)651-8558)

**Biorbyt LLC**

68 TW Alexander Drive  
Research Triangle Park  
Durham  
NC 27713  
United States

Email: [info@biorbyt.com](mailto:info@biorbyt.com), [support@biorbyt.com](mailto:support@biorbyt.com)  
Phone: [+1 \(415\) 906-5211](tel:+1(415)906-5211) | Fax: [+1 \(415\) 651-8558](tel:+1(415)651-8558)

<b>MW</b>	Mono-Isotopic Mass: 48, 673.74 daltons Average Mass: 48, 705.25 daltons
<b>Source</b>	bacteria
<b>Storage</b>	Store at -70 °C. Avoid repeated freeze-thaw cycles.
<b>Dry Ice Shipping</b>	<b>Please note: This product requires shipment on dry ice. A dry ice surcharge will apply.</b>
<b>Note</b>	For research use only
<b>NCBI</b>	<b>QHD43415.1</b>
<b>Expiration Date</b>	6 months from date of receipt.

**Biorbyt Ltd.**

7 Signet Court, Swann Road  
Cambridge  
CB5 8LA  
United Kingdom

Email: [info@biorbyt.com](mailto:info@biorbyt.com), [support@biorbyt.com](mailto:support@biorbyt.com)

Phone: [+44 \(0\)1223 859353](tel:+44(0)1223859353) | Fax: [+1 \(415\) 651-8558](tel:+1(415)651-8558)

**Biorbyt LLC**

68 TW Alexander Drive  
Research Triangle Park  
Durham  
NC 27713  
United States

Email: [info@biorbyt.com](mailto:info@biorbyt.com), [support@biorbyt.com](mailto:support@biorbyt.com)

Phone: [+1 \(415\) 906-5211](tel:+1(415)906-5211) | Fax: [+1 \(415\) 651-8558](tel:+1(415)651-8558)