

## Product Datasheet

# Goat Anti-Rabbit IgG (H+L) Antibody (HRP) (orb1176161)

<b>Catalog Number</b>	orb1176161
<b>Category</b>	Antibodies
<b>Description</b>	Goat Anti-Rabbit IgG (H+L) Antibody (HRP) is an HRP conjugated polyclonal antibody. Generated against a rabbit IgG (H+L), it is supplied in liquid form and exhibits reactivity with rabbit samples. The suitable applications for this antibody are ELISA, IHC-P, IP, WB.
<b>Clonality</b>	Polyclonal
<b>Species/Host</b>	Goat
<b>Isotype</b>	IgG
<b>Conjugation</b>	HRP
<b>Reactivity</b>	Rabbit
<b>Form/Appearance</b>	Liquid
<b>Concentration</b>	1.0 mg/ml
<b>Buffer/Preservatives</b>	PBS pH7.0, 50% glycerol
<b>Purification</b>	Affinity-purified
<b>Immunogen</b>	Rabbit IgG (H+L)
<b>Tested applications</b>	ELISA, IHC-P, IP, WB
<b>Dilution range</b>	WB:1:500-20000, IHC-P:1:200-2000, IP:1:100-1:1000, ELISA: 1:2000-50000

**Biorbyt Ltd.**

7 Signet Court, Swann Road  
Cambridge  
CB5 8LA  
United Kingdom

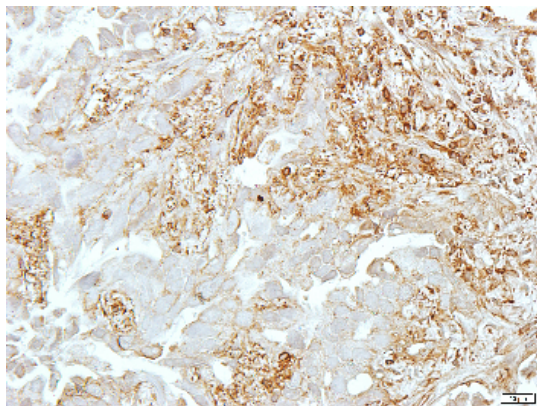
Email: [info@biorbyt.com](mailto:info@biorbyt.com), [support@biorbyt.com](mailto:support@biorbyt.com)  
Phone: [+44 \(0\)1223 859353](tel:+44(0)1223859353) | Fax: [+1 \(415\) 651-8558](tel:+1(415)651-8558)

**Biorbyt LLC**

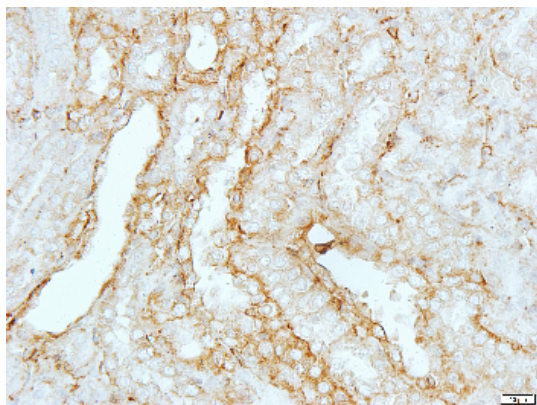
68 TW Alexander Drive  
Research Triangle Park  
Durham  
NC 27713  
United States

Email: [info@biorbyt.com](mailto:info@biorbyt.com), [support@biorbyt.com](mailto:support@biorbyt.com)  
Phone: [+1 \(415\) 906-5211](tel:+1(415)906-5211) | Fax: [+1 \(415\) 651-8558](tel:+1(415)651-8558)

<b>Antibody Type</b>	Secondary Antibody
<b>Storage</b>	Upon receipt, store at -20°C or -80°C. Avoid repeated freeze.
<b>Note</b>	For research use only
<b>Expiration Date</b>	12 months from date of receipt.



Immunohistochemical analysis of paraffin-embedded human lung cancer using Beta-actin Rabbit Polyclonal Antibody orb393034 (1:100) and Goat Anti-Rabbit IgG (H+L) Antibody (HRP) orb1176161 (1:500).



Immunohistochemical analysis of paraffin-embedded rat kidney using Beta-actin Rabbit Polyclonal Antibody orb393034 (1:100) and Goat Anti-Rabbit IgG (H+L) Antibody (HRP) orb1176161 (1:500).

**Biorbyt Ltd.**

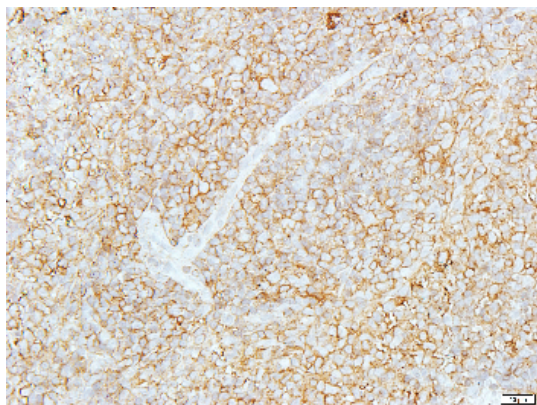
7 Signet Court, Swann Road  
Cambridge  
CB5 8LA  
United Kingdom

Email: [info@biorbyt.com](mailto:info@biorbyt.com), [support@biorbyt.com](mailto:support@biorbyt.com)  
Phone: [+44 \(0\)1223 859353](tel:+44(0)1223859353) | Fax: [+1 \(415\) 651-8558](tel:+1(415)651-8558)

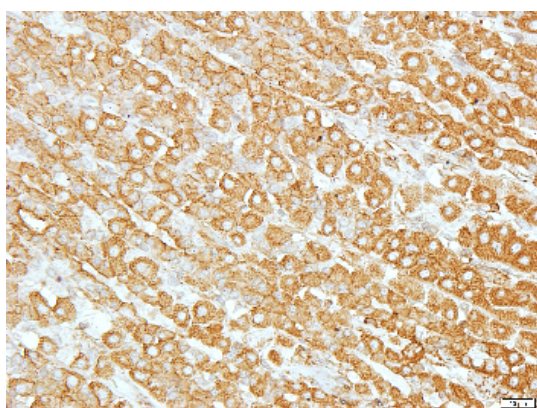
**Biorbyt LLC**

68 TW Alexander Drive  
Research Triangle Park  
Durham  
NC 27713  
United States

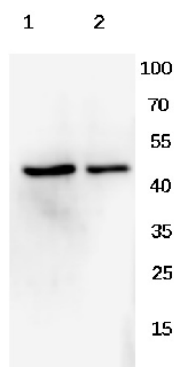
Email: [info@biorbyt.com](mailto:info@biorbyt.com), [support@biorbyt.com](mailto:support@biorbyt.com)  
Phone: [+1 \(415\) 906-5211](tel:+1(415)906-5211) | Fax: [+1 \(415\) 651-8558](tel:+1(415)651-8558)



Immunohistochemical analysis of paraffin-embedded rat spleen using Beta-actin Rabbit Polyclonal Antibody orb393034 (1:100) and Goat Anti-Rabbit IgG (H+L) Antibody (HRP) orb1176161 (1:500).



Immunohistochemical analysis of paraffin-embedded rat stomach using Beta-actin Rabbit Polyclonal Antibody orb393034 (1:100) and Goat Anti-Rabbit IgG (H+L) Antibody (HRP) orb1176161 (1:500).



Western blot analysis of 293T 30 ug (1), 293T 15 ug (2) using Beta-actin Rabbit Polyclonal Antibody orb393034 (1:2000) and Goat Anti-Rabbit IgG (H+L) Antibody (HRP) orb1176161 (1:3000).

**Biorbyt Ltd.**

7 Signet Court, Swann Road  
Cambridge  
CB5 8LA  
United Kingdom

Email: [info@biorbyt.com](mailto:info@biorbyt.com), [support@biorbyt.com](mailto:support@biorbyt.com)

Phone: +44 (0)1223 859353 | Fax: +1 (415) 651-8558

**Biorbyt LLC**

68 TW Alexander Drive  
Research Triangle Park  
Durham  
NC 27713  
United States

Email: [info@biorbyt.com](mailto:info@biorbyt.com), [support@biorbyt.com](mailto:support@biorbyt.com)

Phone: +1 (415) 906-5211 | Fax: +1 (415) 651-8558