

Product Datasheet

GPX4 Rabbit Polyclonal Antibody (orb1174390)

Catalog Number	orb1174390
Category	Antibodies
Description	Rabbit polyclonal antibody to GPX4
Target	GPX4
Clonality	Polyclonal
Species/Host	Rabbit
Isotype	IgG
Conjugation	Unconjugated
Reactivity	Human
Predicted Reactivity	Mouse, Rat
Form/Appearance	Lyophilized power with 1% rAlbumin and 0.02% NaN ₃ .
Purification	Purified by antigen affinity column.
Immunogen	Recombinant fragment corresponding to 13-67aa of human GPX4.
MW	20KD
Tested applications	ELISA, IHC, WB
Dilution range	WB: 1:200-1:1,000
Application notes	Reconstitute in 100µL of sterile H ₂ O with 50% glycerol.

Biorbyt Ltd.

7 Signet Court, Swann Road
Cambridge
CB5 8LA
United Kingdom

Email: info@biorbyt.com, support@biorbyt.com

Phone: [+44 \(0\)1223 859353](tel:+44(0)1223859353) | Fax: [+1 \(415\) 651-8558](tel:+1(415)651-8558)

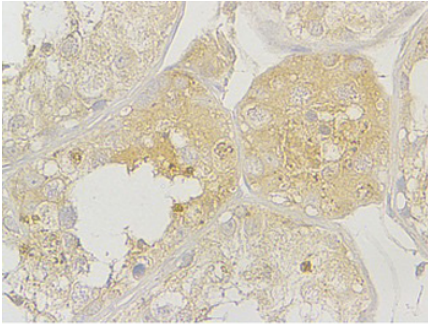
Biorbyt LLC

68 TW Alexander Drive
Research Triangle Park
Durham
NC 27713-2847
United States

Email: info@biorbyt.com, support@biorbyt.com

Phone: [+1 \(415\) 906-5211](tel:+1(415)906-5211) | Fax: [+1 \(415\) 651-8558](tel:+1(415)651-8558)

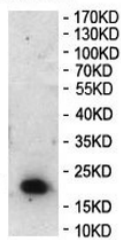
Storage	Maintain refrigerated at 2-8°C for up to 2 weeks. For long term storage store at -20°C in small aliquots to prevent freeze-thaw cycles.
Note	For research use only
Expiration Date	12 months from date of receipt.



Immunohistochemical staining of formalin-fixed paraffin-embedded human testis showing cytoplasmic staining with anti-GPX4 antibody

IHC analysis of orb1174390.

Mouse Testis



Western Blot analysis of
Mouse Testis tissue lysate
with anti-GPX4 antibody

WB analysis of orb1174390.

Biorbyt Ltd.

7 Signet Court, Swann Road
Cambridge
CB5 8LA
United Kingdom

Email: info@biorbyt.com, support@biorbyt.com
Phone: +44 (0)1223 859353 | Fax: +1 (415) 651-8558

Biorbyt LLC

68 TW Alexander Drive
Research Triangle Park
Durham
NC 27713-2847
United States

Email: info@biorbyt.com, support@biorbyt.com
Phone: +1 (415) 906-5211 | Fax: +1 (415) 651-8558