

## Product Datasheet

# Anti-IL-2R alpha (CD25) [Basiliximab] (orb1152522)

<b>Catalog Number</b>	orb1152522
<b>Category</b>	Antibodies
<b>Description</b>	Mouse monoclonal antibody to IL-2R alpha
<b>Target</b>	IL-2R alpha (CD25)
<b>Clonality</b>	Monoclonal
<b>Species/Host</b>	Human
<b>Isotype</b>	Human IgG1
<b>Conjugation</b>	Unconjugated
<b>Reactivity</b>	Human, Primate
<b>Concentration</b>	1 mg/ml
<b>Buffer/Preservatives</b>	PBS with 0.02% Proclin 300.
<b>Purity</b>	Purified
<b>Immunogen</b>	Basiliximab was prepared by immunizing BALB/c mice with CTC 16 cells.
<b>UniProt ID</b>	<b>P01589</b>
<b>Tested applications</b>	Blocking, FC, IF, IHC, WB

### Biorbyt Ltd.

7 Signet Court, Swann Road  
Cambridge  
CB5 8LA  
United Kingdom

Email: [info@biorbyt.com](mailto:info@biorbyt.com), [support@biorbyt.com](mailto:support@biorbyt.com)

Phone: [+44 \(0\)1223 859353](tel:+44(0)1223859353) | Fax: [+1 \(415\) 651-8558](tel:+1(415)651-8558)

### Biorbyt LLC

68 TW Alexander Drive  
Research Triangle Park  
Durham  
NC 27713-2847  
United States

Email: [info@biorbyt.com](mailto:info@biorbyt.com), [support@biorbyt.com](mailto:support@biorbyt.com)

Phone: [+1 \(415\) 906-5211](tel:+1(415)906-5211) | Fax: [+1 \(415\) 651-8558](tel:+1(415)651-8558)

**Specificity**

Basiliximab recognises the human IL-2R and binds to the epitope (116)ERIYHFV(122) within the extracellular domain of the CD25 subunit – binding is abolished when 2 or more residues within the epitope are mutated. This epitope overlaps with the interaction site of CD25 and IL-2. CD25 is found in the high-affinity IL-2R ( $\alpha\beta\gamma$ c) – T cells only express CD25 upon activation. IL-2 binding to IL-2R on T cells modulates proliferation and differentiation.

**Clone Number**

Basiliximab

**Storage**

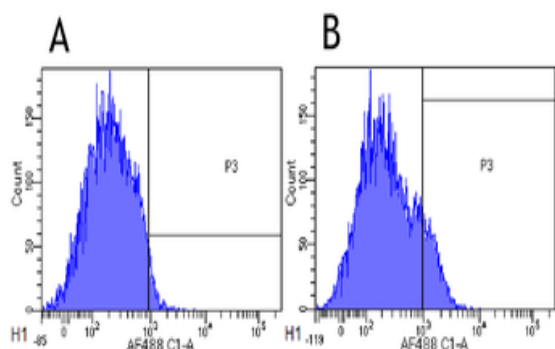
Maintain refrigerated at 2-8°C for up to 2 weeks. For long term storage store at -20°C in small aliquots to prevent freeze-thaw cycles.

**Note**

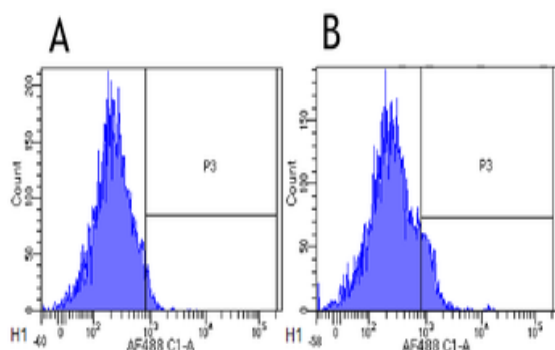
For research use only

**Expiration Date**

12 months from date of receipt.



Flow-cytometry using anti-CD25 antibody Basiliximab Cynomolgus monkey lymphocytes were stained with an isotype control (orb256390, panel A) or the rabbit-chimeric version of Basiliximab (orb348908, panel B) at a concentration of 1 µg/ml for 30 mins at RT. After washing, bound antibody was detected using a AF488 conjugated donkey anti-rabbit antibody and cells analysed on a FACSCanto flow-cytometer.



Flow-cytometry using anti-CD25 antibody Basiliximab Rhesus monkey lymphocytes were stained with an isotype control (orb256390, panel A) or the rabbit-chimeric version of Basiliximab (orb348908, panel B) at a concentration of 1 µg/ml for 30 mins at RT. After washing, bound antibody was detected using a AF488 conjugated donkey anti-rabbit antibody and cells analysed on a FACSCanto flow-cytometer.

**Biorbyt Ltd.**

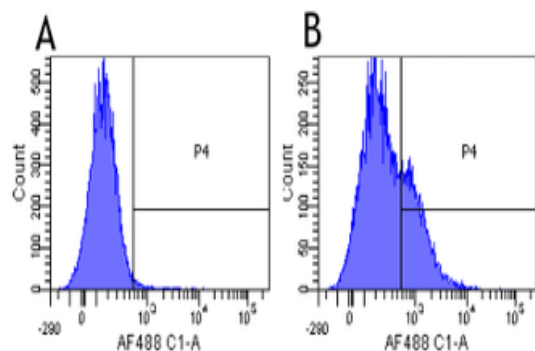
7 Signet Court, Swann Road  
Cambridge  
CB5 8LA  
United Kingdom

Email: [info@biorbyt.com](mailto:info@biorbyt.com), [support@biorbyt.com](mailto:support@biorbyt.com)  
Phone: +44 (0)1223 859353 | Fax: +1 (415) 651-8558

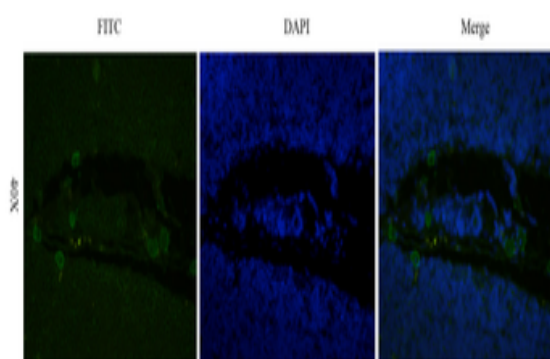
**Biorbyt LLC**

68 TW Alexander Drive  
Research Triangle Park  
Durham  
NC 27713-2847  
United States

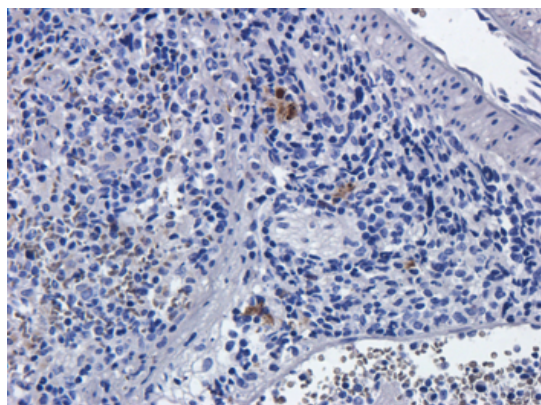
Email: [info@biorbyt.com](mailto:info@biorbyt.com), [support@biorbyt.com](mailto:support@biorbyt.com)  
Phone: +1 (415) 906-5211 | Fax: +1 (415) 651-8558



Flow-cytometry using the anti-CD25 (IL2R) research biosimilar antibody Basiliximab Human lymphocytes were stained with an isotype control (orb256390, panel A) or the rabbit-chimeric version of Basiliximab (orb348908, panel B) at a concentration of 1  $\mu\text{g}/\text{ml}$  for 30 mins at RT. After washing, bound antibody was detected using a AF488 conjugated donkey anti-rabbit antibody and cells analysed on a FACSCanto flow-cytometer.



Immunofluorescent staining of rat thymus using anti-CD25 antibody. Formaldehyde-fixed rat thymus slices were stained with orb348865 at 5  $\mu\text{g}/\text{ml}$  and detected with a FITC-conjugated secondary antibody.



Immunohistochemical staining of rat spleens using anti-CD25 antibody. Formalin fixed rat spleen slices were stained with a orb348865 at 5  $\mu\text{g}/\text{ml}$ . The anti-human CD25 antibody also shows some cross-reactivity with rat in IHC.

**Biorbyt Ltd.**

7 Signet Court, Swann Road  
Cambridge  
CB5 8LA  
United Kingdom

Email: [info@biorbyt.com](mailto:info@biorbyt.com), [support@biorbyt.com](mailto:support@biorbyt.com)

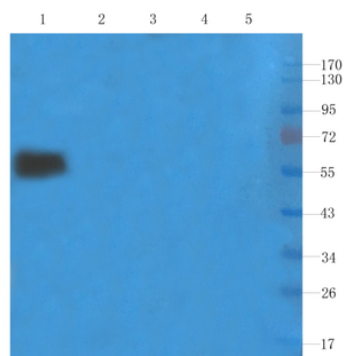
Phone: +44 (0)1223 859353 | Fax: +1 (415) 651-8558

**Biorbyt LLC**

68 TW Alexander Drive  
Research Triangle Park  
Durham  
NC 27713-2847  
United States

Email: [info@biorbyt.com](mailto:info@biorbyt.com), [support@biorbyt.com](mailto:support@biorbyt.com)

Phone: +1 (415) 906-5211 | Fax: +1 (415) 651-8558



Western Blot using anti-IL2R alpha (CD25) antibody. Human thyroid cancer (lane 1), rat spleen (lane 2), mouse lymph node (lane 3), mouse thymus (lane 4) and rat small intestines (lane 5) samples were resolved on a 10% SDS PAGE gel and blots probed with orb348865 at 1  $\mu$ g/ml before being detected by a secondary antibody.

**Biorbyt Ltd.**

7 Signet Court, Swann Road  
Cambridge  
CB5 8LA  
United Kingdom

Email: [info@biorbyt.com](mailto:info@biorbyt.com), [support@biorbyt.com](mailto:support@biorbyt.com)

Phone: [+44 \(0\)1223 859353](tel:+44(0)1223859353) | Fax: [+1 \(415\) 651-8558](tel:+1(415)651-8558)

**Biorbyt LLC**

68 TW Alexander Drive  
Research Triangle Park  
Durham  
NC 27713-2847  
United States

Email: [info@biorbyt.com](mailto:info@biorbyt.com), [support@biorbyt.com](mailto:support@biorbyt.com)

Phone: [+1 \(415\) 906-5211](tel:+1(415)906-5211) | Fax: [+1 \(415\) 651-8558](tel:+1(415)651-8558)