

Product Datasheet

TGF beta Receptor 2 Rabbit Polyclonal Antibody (orb11471)

Catalog Number	orb11471
Category	Antibodies
Description	TGF beta Receptor 2 Rabbit Polyclonal Antibody
Target	TGF beta Receptor 2
Clonality	Polyclonal
Species/Host	Rabbit
Isotype	IgG
Conjugation	Unconjugated
Reactivity	Human, Mouse, Rat
Form/Appearance	10 mM PBS, 0.02% sodium azide
Concentration	- 100 µg (in 200 µl): 0.5 mg/ml- 200 µg (in 400 µl): 0.5 mg/ml
Purity	Polyclonal antibodies are purified by peptide affinity chromatography
Immunogen	KLH conjugated synthetic peptide derived from human TGF beta Receptor 2. Please contact us for the exact immunogen sequence. The peptide is available as orb374751.
UniProt ID	Q62312, P37173
RRID	AB_10747657
MW	56 kDa

Biorbyt Ltd.

7 Signet Court, Swann Road
Cambridge
CB5 8LA
United Kingdom

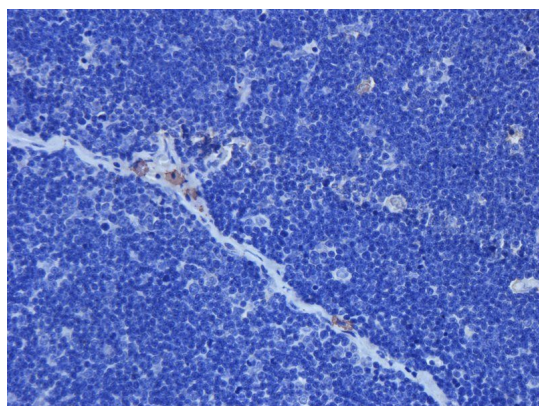
Email: info@biorbyt.com, support@biorbyt.com
Phone: [+44 \(0\)1223 859353](tel:+44(0)1223859353) | Fax: [+1 \(415\) 651-8558](tel:+1(415)651-8558)

Biorbyt LLC

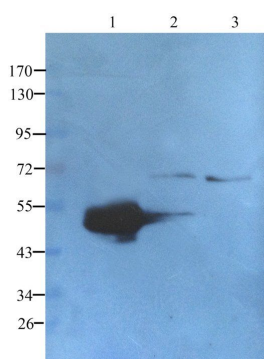
68 TW Alexander Drive
Research Triangle Park
Durham
NC 27713
United States

Email: info@biorbyt.com, support@biorbyt.com
Phone: [+1 \(415\) 906-5211](tel:+1(415)906-5211) | Fax: [+1 \(415\) 651-8558](tel:+1(415)651-8558)

Tested applications	ELISA, IHC-P, WB
Dilution range	IHC-P: 1:100-600, WB: 1:100-2000
Storage	Maintain refrigerated at 2-8°C for up to 2 weeks. For long term storage store at -20°C in small aliquots to prevent freeze-thaw cycles.
Note	For research use only
Entrez	7048
NCBI	001024847, 21, 001020018, 11
Expiration Date	12 months from date of receipt.



Immunohistochemical staining of paraffin embedded rat thymus tissue using TGF beta Receptor 2 antibody (primary antibody at 2.5 ug/ml)



WB analysis of human lung cancer (lane 1); HeLa cells (lane 2); 293T cells (lane 3) using TGF beta Receptor 2 antibody (1 ug/ml)

Biorbyt Ltd.

7 Signet Court, Swann Road
Cambridge
CB5 8LA
United Kingdom

Email: info@biorbyt.com, support@biorbyt.com

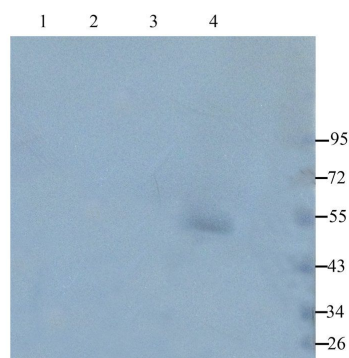
Phone: [+44 \(0\)1223 859353](tel:+44(0)1223859353) | Fax: [+1 \(415\) 651-8558](tel:+1(415)651-8558)

Biorbyt LLC

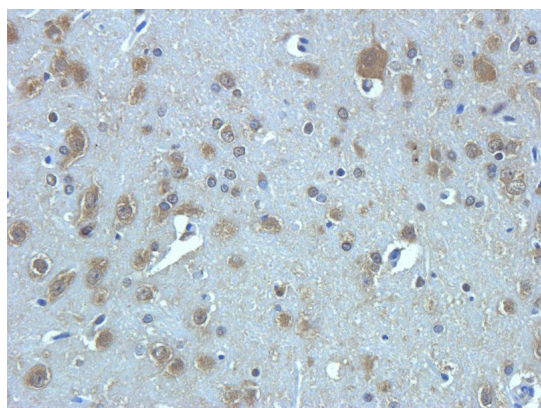
68 TW Alexander Drive
Research Triangle Park
Durham
NC 27713
United States

Email: info@biorbyt.com, support@biorbyt.com

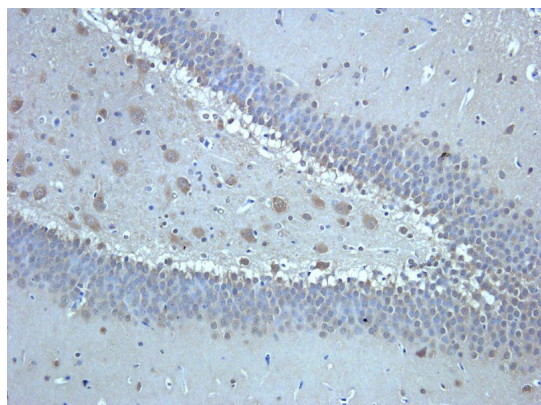
Phone: [+1 \(415\) 906-5211](tel:+1(415)906-5211) | Fax: [+1 \(415\) 651-8558](tel:+1(415)651-8558)



Western blot analysis of rat pancreas (lane 1); rat brain (lane 2); rat testis (lane 3); human breast cancer (lane 4) using TGF beta Receptor 2 antibody (1 ug/ml)



IHC-P staining of rat brain tissue using anti-TGF beta Receptor 2 (dilution at 2.5 ug/ml)



Immunohistochemical staining of paraffin embedded rat brain tissue using TGF beta Receptor 2 antibody (primary antibody at 2.5 ug/ml)

Biorbyt Ltd.

7 Signet Court, Swann Road
Cambridge
CB5 8LA
United Kingdom

Email: info@biorbyt.com, support@biorbyt.com

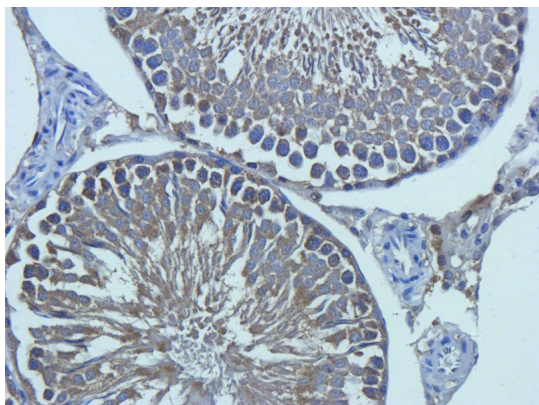
Phone: +44 (0)1223 859353 | Fax: +1 (415) 651-8558

Biorbyt LLC

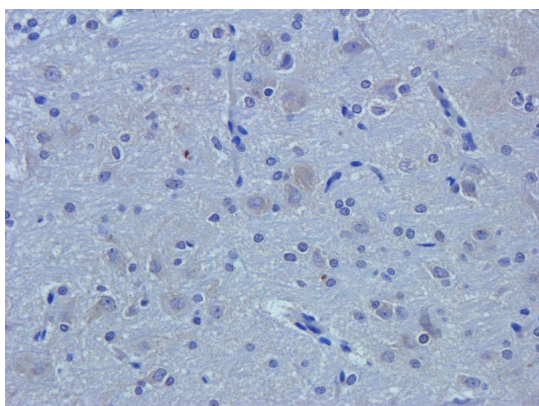
68 TW Alexander Drive
Research Triangle Park
Durham
NC 27713
United States

Email: info@biorbyt.com, support@biorbyt.com

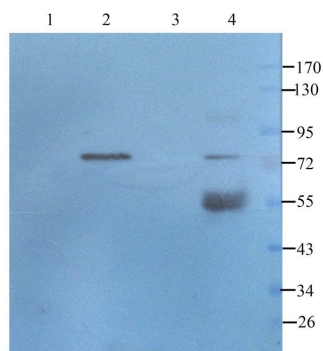
Phone: +1 (415) 906-5211 | Fax: +1 (415) 651-8558



IHC-P image of rat testis tissue using TGF beta Receptor 2 antibody (dilution of primary antibody at 2.5 ug/ml)



IHC-P staining of rat brain tissue using anti-TGF beta Receptor 2 (dilution at 2.5 ug/ml)



Western blot analysis of rat pancreas (lane 1); rat brain (lane 2); rat testis (lane 3); human breast cancer (lane 4) using TGF beta Receptor 2 antibody (1 ug/ml)

Biorbyt Ltd.

7 Signet Court, Swann Road
Cambridge
CB5 8LA
United Kingdom

Email: info@biorbyt.com, support@biorbyt.com

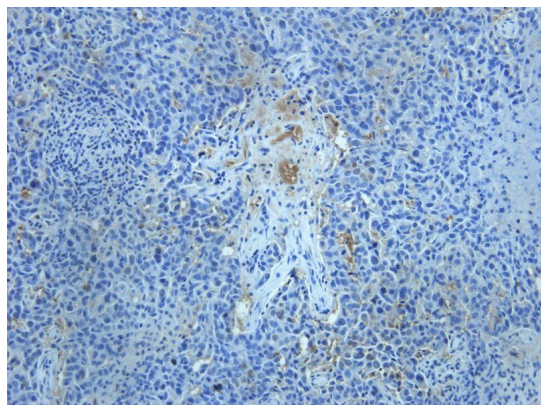
Phone: +44 (0)1223 859353 | Fax: +1 (415) 651-8558

Biorbyt LLC

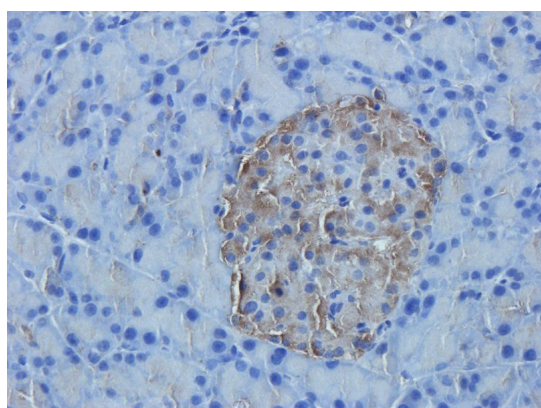
68 TW Alexander Drive
Research Triangle Park
Durham
NC 27713
United States

Email: info@biorbyt.com, support@biorbyt.com

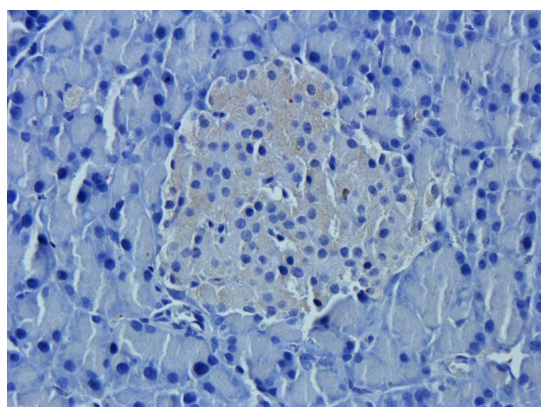
Phone: +1 (415) 906-5211 | Fax: +1 (415) 651-8558



IHC-P staining of human breast cancer tissue using TGF beta Receptor 2 antibody (dilution at 2.5 ug/ml)



IHC-P image of rat pancreas tissue using TGF beta Receptor 2 antibody (dilution of primary antibody at 2.5 ug/ml)



Immunohistochemical staining of paraffin embedded rat pancreas tissue using TGF beta Receptor 2 antibody (primary antibody at 2.5 ug/ml)

Biorbyt Ltd.

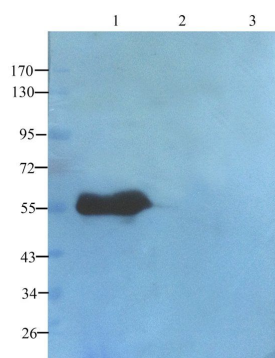
7 Signet Court, Swann Road
Cambridge
CB5 8LA
United Kingdom

Email: info@biorbyt.com, support@biorbyt.com
Phone: [+44 \(0\)1223 859353](tel:+44(0)1223859353) | Fax: [+1 \(415\) 651-8558](tel:+1(415)651-8558)

Biorbyt LLC

68 TW Alexander Drive
Research Triangle Park
Durham
NC 27713
United States

Email: info@biorbyt.com, support@biorbyt.com
Phone: [+1 \(415\) 906-5211](tel:+1(415)906-5211) | Fax: [+1 \(415\) 651-8558](tel:+1(415)651-8558)



WB analysis of human lung cancer (lane 1); HeLa cells (lane 2); 293T cells (lane 3) using TGF beta Receptor 2 antibody (1 ug/ml)

Biorbyt Ltd.

7 Signet Court, Swann Road
Cambridge
CB5 8LA
United Kingdom

Email: info@biorbyt.com, support@biorbyt.com

Phone: [+44 \(0\)1223 859353](tel:+44(0)1223859353) | Fax: [+1 \(415\) 651-8558](tel:+1(415)651-8558)

Biorbyt LLC

68 TW Alexander Drive
Research Triangle Park
Durham
NC 27713
United States

Email: info@biorbyt.com, support@biorbyt.com

Phone: [+1 \(415\) 906-5211](tel:+1(415)906-5211) | Fax: [+1 \(415\) 651-8558](tel:+1(415)651-8558)