

Product Datasheet

SOD2 Rabbit Polyclonal Antibody (orb11395)

Catalog Number	orb11395
Category	Antibodies
Description	SOD2 Rabbit Polyclonal Antibody is an unconjugated antibody that specifically recognizes SOD2. Generated against a KLH conjugated synthetic peptide derived from human SOD2. The peptide is available as orb374749. It is supplied in liquid form and exhibits reactivity with Bovine, Canine, Equine, Human, Mouse, Porcine and Rat, Sheep samples. The suitable applications for this antibody are ELISA, IHC-P and WB.
Target	SOD2
Clonality	Polyclonal
Species/Host	Rabbit
Isotype	IgG
Conjugation	Unconjugated
Reactivity	Bovine, Canine, Equine, Human, Mouse, Porcine, Rat, Sheep
Form/Appearance	10 mM PBS, 0.02% sodium azide
Concentration	- 100 µg (in 200 µl): 0.5 mg/ml- 200 µg (in 400 µl): 0.5 mg/ml
Purity	Polyclonal antibodies are purified by peptide affinity chromatography
Immunogen	KLH conjugated synthetic peptide derived from human SOD2. Please contact us for the exact immunogen sequence. The peptide is available as orb374749.
UniProt ID	P09671, P04179, P07895
RRID	AB_10749396

Biorbyt Ltd.

7 Signet Court, Swann Road
Cambridge
CB5 8LA
United Kingdom

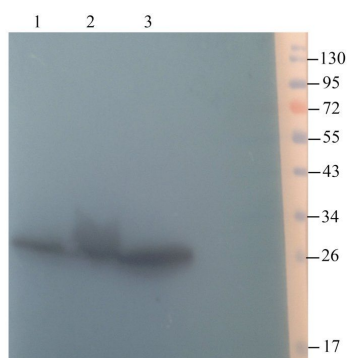
Email: info@biorbyt.com, support@biorbyt.com
Phone: [+44 \(0\)1223 859353](tel:+44(0)1223859353) | Fax: [+1 \(415\) 651-8558](tel:+1(415)651-8558)

Biorbyt LLC

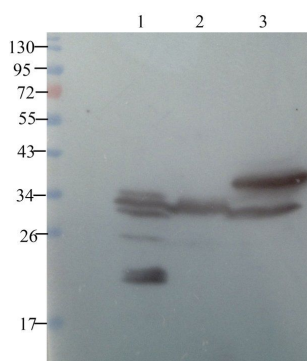
68 TW Alexander Drive
Research Triangle Park
Durham
NC 27713
United States

Email: info@biorbyt.com, support@biorbyt.com
Phone: [+1 \(415\) 906-5211](tel:+1(415)906-5211) | Fax: [+1 \(415\) 651-8558](tel:+1(415)651-8558)

MW	25 kDa
Tested applications	ELISA, IHC-P, WB
Dilution range	IHC-P: 1:200, WB: 1:200-1000
Storage	Maintain refrigerated at 2-8°C for up to 2 weeks. For long term storage store at -20°C in small aliquots to prevent freeze-thaw cycles.
Note	For research use only
Entrez	6648
NCBI	000627, 21, 000636
Expiration Date	12 months from date of receipt.



Western blot analysis of rat heart (lane 1), rat kidney (lane 2), rat liver (lane 3) using SOD2 antibody (1 ug/ml)



WB analysis of rat heart (lane 1), rat kidney (lane 2), rat liver (lane 3) using SOD2 antibody (1 ug/ml)

Biorbyt Ltd.

7 Signet Court, Swann Road
Cambridge
CB5 8LA
United Kingdom

Email: info@biorbyt.com, support@biorbyt.com

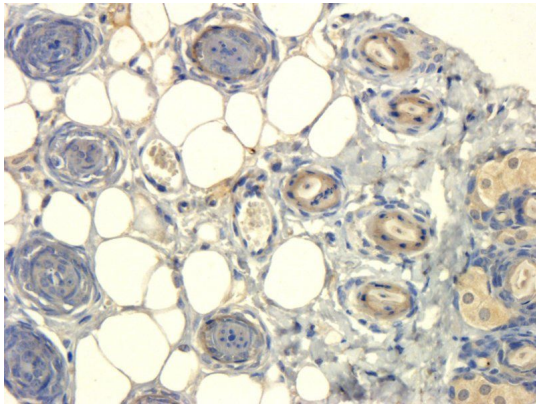
Phone: [+44 \(0\)1223 859353](tel:+44(0)1223859353) | Fax: [+1 \(415\) 651-8558](tel:+1(415)651-8558)

Biorbyt LLC

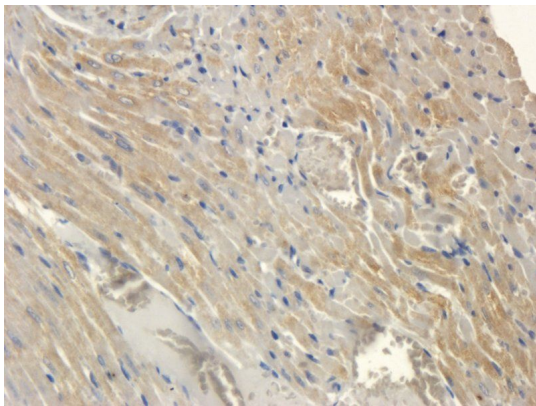
68 TW Alexander Drive
Research Triangle Park
Durham
NC 27713
United States

Email: info@biorbyt.com, support@biorbyt.com

Phone: [+1 \(415\) 906-5211](tel:+1(415)906-5211) | Fax: [+1 \(415\) 651-8558](tel:+1(415)651-8558)



IHC-P staining of mouse skin tissue using SOD2 antibody (2.5 ug/ml)



Immunohistochemical staining of rat heart tissue using SOD2 antibody (2.5 ug/ml)

Biorbyt Ltd.

7 Signet Court, Swann Road
Cambridge
CB5 8LA
United Kingdom

Email: info@biorbyt.com, support@biorbyt.com

Phone: [+44 \(0\)1223 859353](tel:+44(0)1223859353) | Fax: [+1 \(415\) 651-8558](tel:+1(415)651-8558)

Biorbyt LLC

68 TW Alexander Drive
Research Triangle Park
Durham
NC 27713
United States

Email: info@biorbyt.com, support@biorbyt.com

Phone: [+1 \(415\) 906-5211](tel:+1(415)906-5211) | Fax: [+1 \(415\) 651-8558](tel:+1(415)651-8558)