

## Product Datasheet

### OPG Rabbit Polyclonal Antibody (orb11189)

|                            |   |
|----------------------------|---|
| <b>Catalog Number</b>      | orb11189  |
| <b>Category</b>            | Antibodies  |
| <b>Description</b>         | OPG Rabbit Polyclonal Antibody  |
| <b>Target</b>              | OPG   |
| <b>Clonality</b>           | Polyclonal  |
| <b>Species/Host</b>        | Rabbit  |
| <b>Isotype</b>             | IgG   |
| <b>Conjugation</b>         | Unconjugated  |
| <b>Form/Appearance</b>     | 10 mM PBS, 0.02% sodium azide   |
| <b>Concentration</b>       | - 100 µg (in 200 µl): 0.5 mg/ml- 200 µg (in 400 µl): 0.5 mg/ml  |
| <b>Purity</b>              | Purified by Protein A affinity chromatography.  |
| <b>Immunogen</b>           | KLH conjugated synthetic peptide derived from human OPG. Please contact us for the exact immunogen sequence. The peptide is available as orb374854. |
| <b>UniProt ID</b>          | <b>O00300</b>   |
| <b>RRID</b>                | AB_10751934   |
| <b>MW</b>                  | 43 kDa  |
| <b>Tested applications</b> | ELISA, ICC, IF, IHC-P, WB   |
| <b>Dilution range</b>      | IF/ICC: 1:200, IHC-P: 1:200, WB: 2 µg/ml  |

**Biorbyt Ltd.**

7 Signet Court, Swann Road  
Cambridge  
CB5 8LA  
United Kingdom

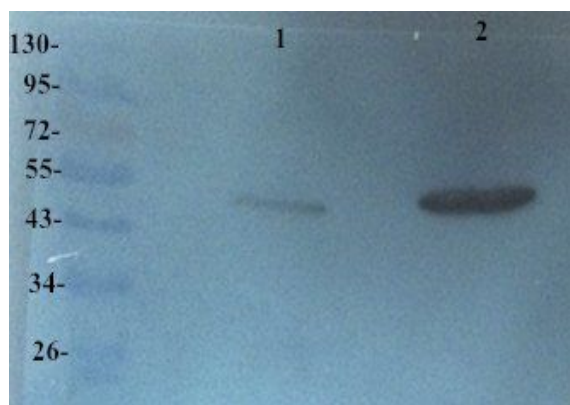
Email: [info@biorbyt.com](mailto:info@biorbyt.com), [support@biorbyt.com](mailto:support@biorbyt.com)  
Phone: [+44 \(0\)1223 859353](tel:+44(0)1223859353) | Fax: [+1 \(415\) 651-8558](tel:+1(415)651-8558)

**Biorbyt LLC**

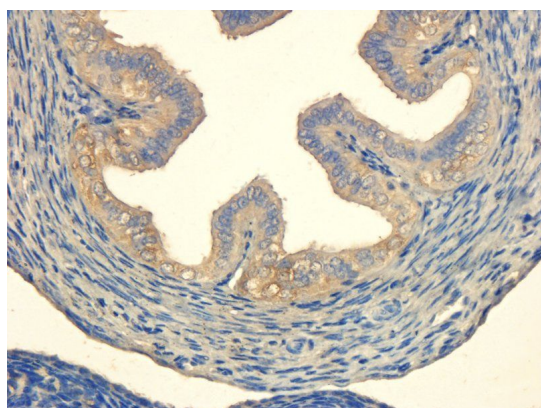
68 TW Alexander Drive  
Research Triangle Park  
Durham  
NC 27713  
United States

Email: [info@biorbyt.com](mailto:info@biorbyt.com), [support@biorbyt.com](mailto:support@biorbyt.com)  
Phone: [+1 \(415\) 906-5211](tel:+1(415)906-5211) | Fax: [+1 \(415\) 651-8558](tel:+1(415)651-8558)

|                        |   |
|------------------------|---|
| <b>Storage</b>         | Maintain refrigerated at 2-8°C for up to 2 weeks. For long term storage store at -20°C in small aliquots to prevent freeze-thaw cycles. |
| <b>Note</b>            | For research use only   |
| <b>Entrez</b>          | <b>4982</b>   |
| <b>NCBI</b>            | <b>002546, 002537, 31</b>   |
| <b>Expiration Date</b> | 12 months from date of receipt.   |



Western blot analysis of Rat heart (Lane 1), Rat liver (Lane 2) using OPG antibody (primary antibody dilution at 2 ug/ml)



Immunohistochemical staining of paraffin embedded mouse ovary tissue using anti-OPG (primary antibody at 1:200)

**Biorbyt Ltd.**

7 Signet Court, Swann Road  
Cambridge  
CB5 8LA  
United Kingdom

Email: [info@biorbyt.com](mailto:info@biorbyt.com), [support@biorbyt.com](mailto:support@biorbyt.com)

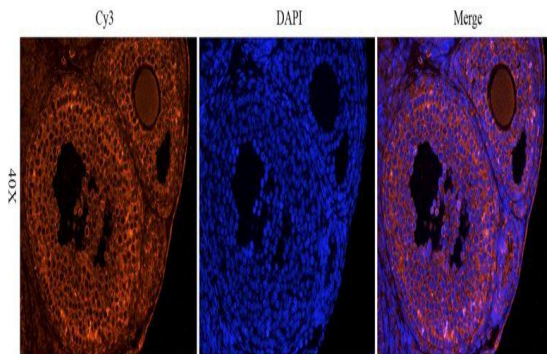
Phone: +44 (0)1223 859353 | Fax: +1 (415) 651-8558

**Biorbyt LLC**

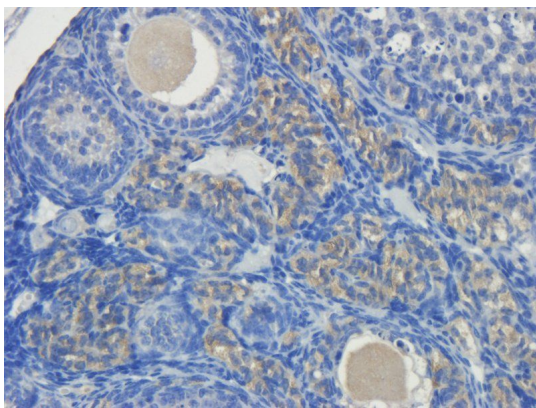
68 TW Alexander Drive  
Research Triangle Park  
Durham  
NC 27713  
United States

Email: [info@biorbyt.com](mailto:info@biorbyt.com), [support@biorbyt.com](mailto:support@biorbyt.com)

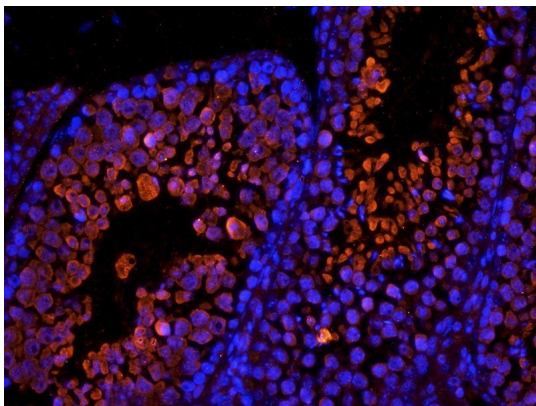
Phone: +1 (415) 906-5211 | Fax: +1 (415) 651-8558



IF image of mouse ovary tissue using OPG antibody (primary antibody at 1:200)



Immunohistochemical staining of mouse ovary tissue using OPG antibody (dilution of primary antibody - 1:200)



Immunofluorescence analysis of mouse testis tissue using anti-OPG (dilution of primary antibody - 1:200)

**Biorbyt Ltd.**

7 Signet Court, Swann Road  
Cambridge  
CB5 8LA  
United Kingdom

Email: [info@biorbyt.com](mailto:info@biorbyt.com), [support@biorbyt.com](mailto:support@biorbyt.com)

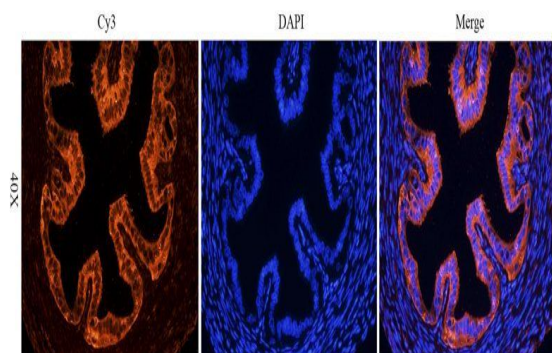
Phone: [+44 \(0\)1223 859353](tel:+44(0)1223859353) | Fax: [+1 \(415\) 651-8558](tel:+1(415)651-8558)

**Biorbyt LLC**

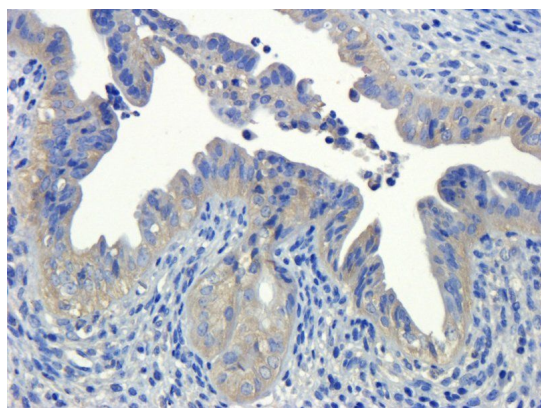
68 TW Alexander Drive  
Research Triangle Park  
Durham  
NC 27713  
United States

Email: [info@biorbyt.com](mailto:info@biorbyt.com), [support@biorbyt.com](mailto:support@biorbyt.com)

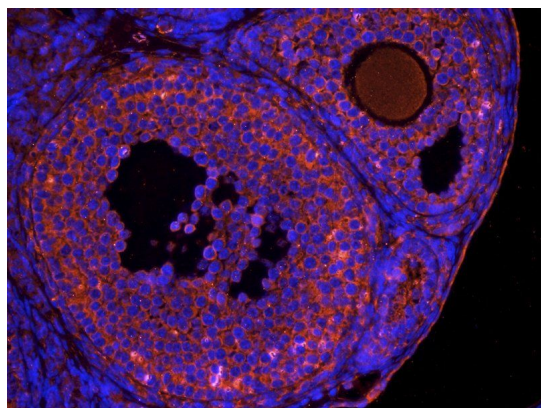
Phone: [+1 \(415\) 906-5211](tel:+1(415)906-5211) | Fax: [+1 \(415\) 651-8558](tel:+1(415)651-8558)



IF image of mouse ovary tissue using anti-OPG (primary antibody at 1:200)



IHC-P image of mouse ovary tissue using anti-OPG (dilution of primary antibody at 1:200)



IF analysis of mouse ovary tissue using OPG antibody (dilution of primary antibody at 1:200)

**Biorbyt Ltd.**

7 Signet Court, Swann Road  
Cambridge  
CB5 8LA  
United Kingdom

Email: [info@biorbyt.com](mailto:info@biorbyt.com), [support@biorbyt.com](mailto:support@biorbyt.com)

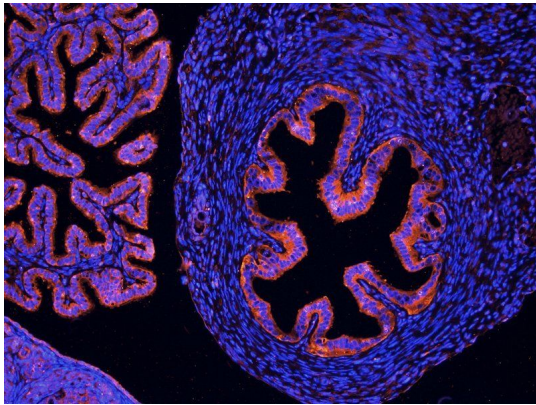
Phone: +44 (0)1223 859353 | Fax: +1 (415) 651-8558

**Biorbyt LLC**

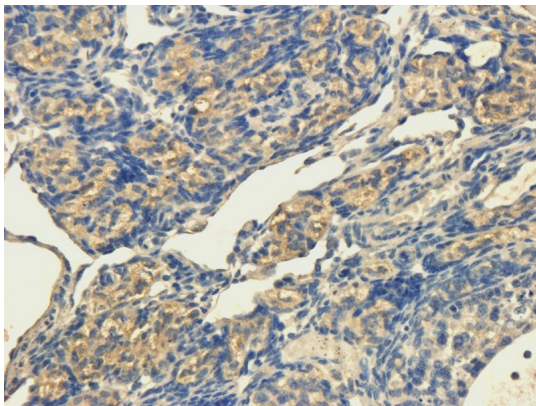
68 TW Alexander Drive  
Research Triangle Park  
Durham  
NC 27713  
United States

Email: [info@biorbyt.com](mailto:info@biorbyt.com), [support@biorbyt.com](mailto:support@biorbyt.com)

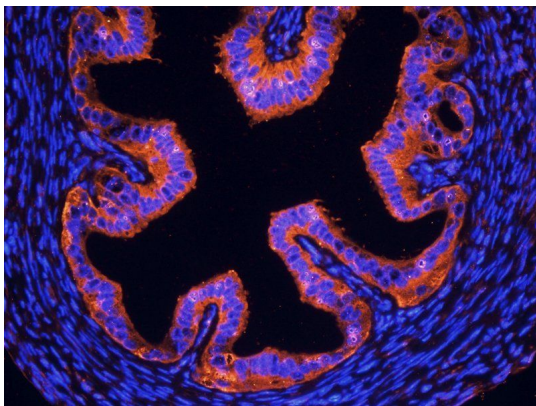
Phone: +1 (415) 906-5211 | Fax: +1 (415) 651-8558



Immunofluorescence analysis of mouse ovary tissue using OPG antibody (dilution of primary antibody - 1:200)



Immunohistochemical staining of paraffin embedded mouse ovary tissue using OPG antibody (primary antibody at 1:200)



Immunofluorescence image of mouse ovary tissue using anti-OPG (dilution at 1:200)

**Biorbyt Ltd.**

7 Signet Court, Swann Road  
Cambridge  
CB5 8LA  
United Kingdom

Email: [info@biorbyt.com](mailto:info@biorbyt.com), [support@biorbyt.com](mailto:support@biorbyt.com)

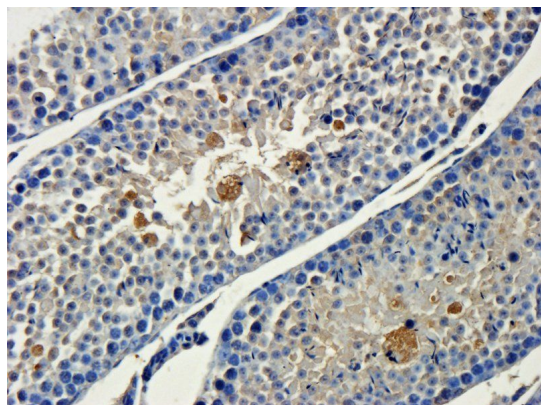
Phone: [+44 \(0\)1223 859353](tel:+44(0)1223859353) | Fax: [+1 \(415\) 651-8558](tel:+1(415)651-8558)

**Biorbyt LLC**

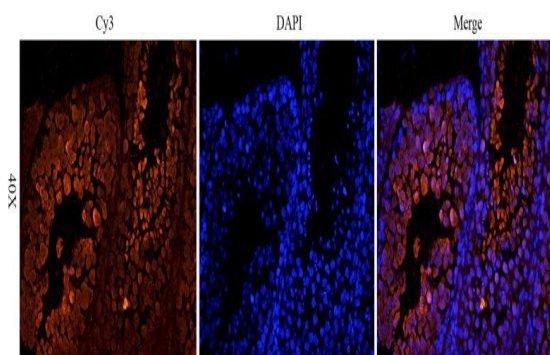
68 TW Alexander Drive  
Research Triangle Park  
Durham  
NC 27713  
United States

Email: [info@biorbyt.com](mailto:info@biorbyt.com), [support@biorbyt.com](mailto:support@biorbyt.com)

Phone: [+1 \(415\) 906-5211](tel:+1(415)906-5211) | Fax: [+1 \(415\) 651-8558](tel:+1(415)651-8558)



IHC-P staining of mouse testis tissue using OPG antibody (dilution at 1:200)



Immunofluorescence analysis of mouse testis tissue using OPG antibody (dilution of primary antibody - 1:200)

**Biorbyt Ltd.**

7 Signet Court, Swann Road  
Cambridge  
CB5 8LA  
United Kingdom

Email: [info@biorbyt.com](mailto:info@biorbyt.com), [support@biorbyt.com](mailto:support@biorbyt.com)

Phone: [+44 \(0\)1223 859353](tel:+44(0)1223859353) | Fax: [+1 \(415\) 651-8558](tel:+1(415)651-8558)

**Biorbyt LLC**

68 TW Alexander Drive  
Research Triangle Park  
Durham  
NC 27713  
United States

Email: [info@biorbyt.com](mailto:info@biorbyt.com), [support@biorbyt.com](mailto:support@biorbyt.com)

Phone: [+1 \(415\) 906-5211](tel:+1(415)906-5211) | Fax: [+1 \(415\) 651-8558](tel:+1(415)651-8558)