

Product Datasheet

Melatonin Receptor 1A antibody (orb11085)

Catalog Number	orb11085
Category	Antibodies
Description	Melatonin Receptor 1A antibody
Target	Melatonin Receptor 1A
Clonality	Polyclonal
Species/Host	Rabbit
Isotype	IgG
Conjugation	Unconjugated
Form/Appearance	10 mM PBS, 0.02% sodium azide
Concentration	- 100 µg (in 200 µl): 0.5 mg/ml- 200 µg (in 400 µl): 0.5 mg/ml
Purity	Polyclonal antibodies are purified by peptide affinity chromatography
Immunogen	KLH conjugated synthetic peptide derived from human Melatonin Receptor 1A. Please contact us for the exact immunogen sequence. The peptide is available as orb374736.
UniProt ID	B7X945, P48039, Q61184
RRID	AB_10747021
MW	38 kDa
Tested applications	ELISA, ICC, IF, IHC-P, WB
Dilution range	WB: 2 µg/ml, IHC-P:1:500, IF/ICC: 1:300

Biorbyt Ltd.

7 Signet Court, Swann Road
Cambridge
CB5 8LA
United Kingdom

Email: info@biorbyt.com, support@biorbyt.com

Phone: [+44 \(0\)1223 859353](tel:+44(0)1223859353) | Fax: [+1 \(415\) 651-8558](tel:+1(415)651-8558)

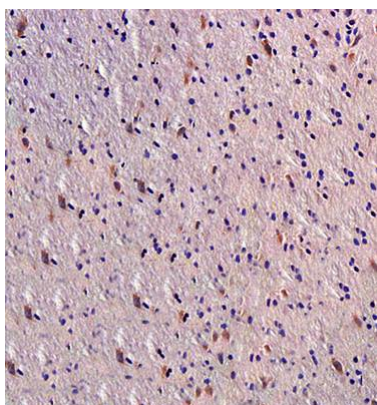
Biorbyt LLC

68 TW Alexander Drive
Research Triangle Park
Durham
NC 27713
United States

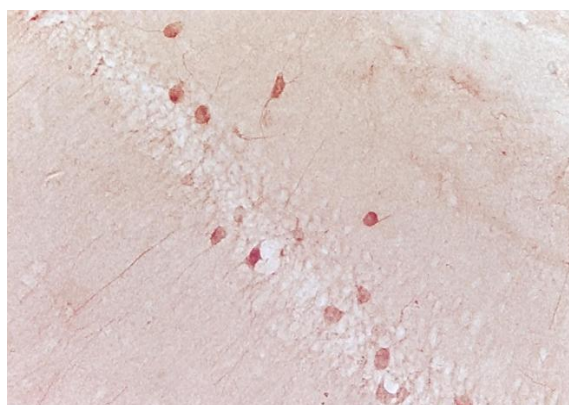
Email: info@biorbyt.com, support@biorbyt.com

Phone: [+1 \(415\) 906-5211](tel:+1(415)906-5211) | Fax: [+1 \(415\) 651-8558](tel:+1(415)651-8558)

Storage	Maintain refrigerated at 2-8°C for up to 2 weeks. For long term storage store at -20°C in small aliquots to prevent freeze-thaw cycles.
Note	For research use only
Entrez	4543
NCBI	005958, 11, 31, 005949
Expiration Date	12 months from date of receipt.



Immunohistochemical analysis of formalin fixed and paraffin embedded rat brain tissue(Snr) using anti Melatonin Receptor 1A (primary antibody at 1:300)



IHC-P of mouse hippocampus tissue using Melatonin Receptor 1A antibody (orb11085 at 1:300)

Biorbyt Ltd.

7 Signet Court, Swann Road
Cambridge
CB5 8LA
United Kingdom

Email: info@biorbyt.com, support@biorbyt.com

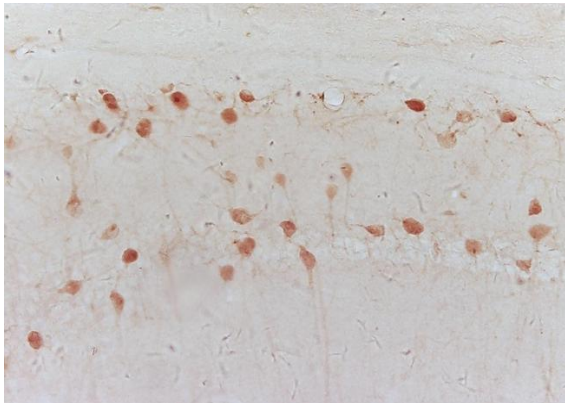
Phone: [+44 \(0\)1223 859353](tel:+44(0)1223859353) | Fax: [+1 \(415\) 651-8558](tel:+1(415)651-8558)

Biorbyt LLC

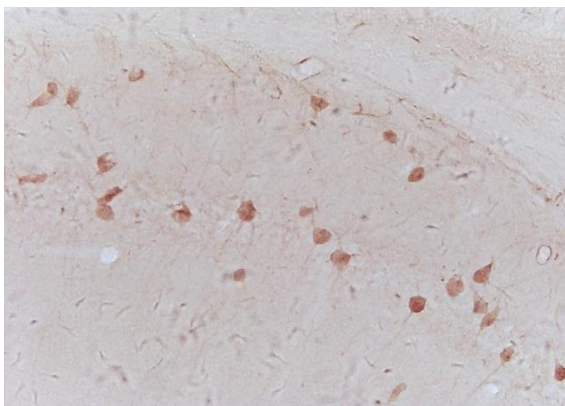
68 TW Alexander Drive
Research Triangle Park
Durham
NC 27713
United States

Email: info@biorbyt.com, support@biorbyt.com

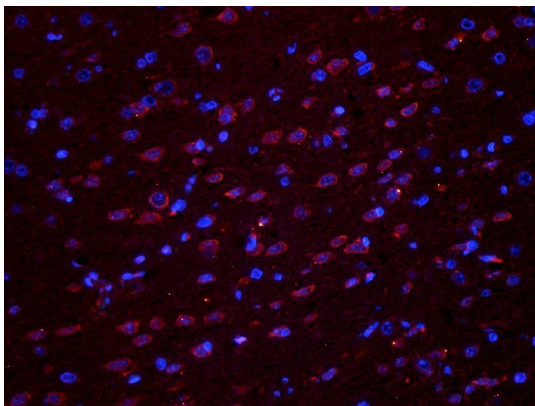
Phone: [+1 \(415\) 906-5211](tel:+1(415)906-5211) | Fax: [+1 \(415\) 651-8558](tel:+1(415)651-8558)



IHC-P of mouse hippocampus tissue (orb11085 at 1:300)



Immunohistochemical staining of paraffin embedded mouse hippocampus tissue using Melatonin Receptor 1A antibody (dilution at 1:500)



Immunofluorescence analysis of rat brain tissue using Melatonin receptor 1A antibody (dilution of primary antibody at 1:300)

Biorbyt Ltd.

7 Signet Court, Swann Road
Cambridge
CB5 8LA
United Kingdom

Email: info@biorbyt.com, support@biorbyt.com

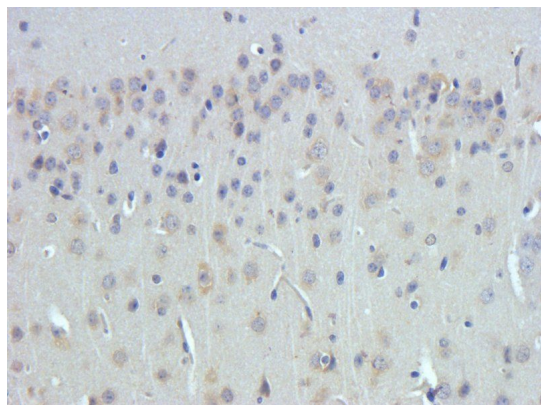
Phone: [+44 \(0\)1223 859353](tel:+44(0)1223859353) | Fax: [+1 \(415\) 651-8558](tel:+1(415)651-8558)

Biorbyt LLC

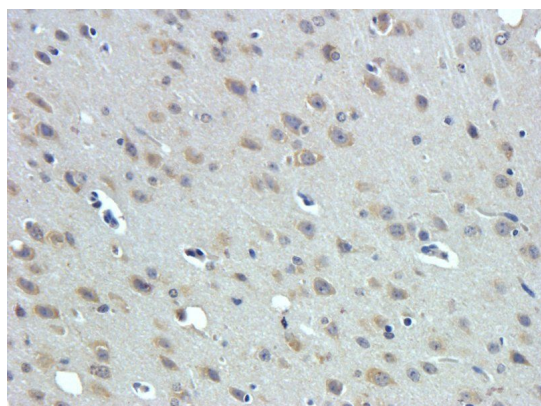
68 TW Alexander Drive
Research Triangle Park
Durham
NC 27713
United States

Email: info@biorbyt.com, support@biorbyt.com

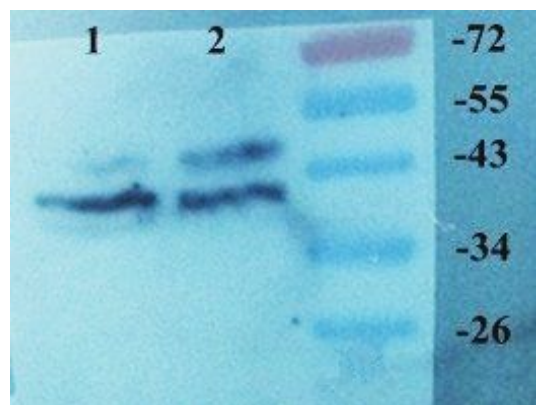
Phone: [+1 \(415\) 906-5211](tel:+1(415)906-5211) | Fax: [+1 \(415\) 651-8558](tel:+1(415)651-8558)



Immunohistochemical staining of rat brain tissue using Melatonin receptor 1A antibody (dilution of primary antibody - 1:500)



IHC-P image of rat brain tissue using anti-Melatonin receptor 1A (dilution of primary antibody at 1:500)



Western blot analysis of Rat brain (lane 1), Mouse brain (lane 2) using Melatonin Receptor antibody (Dilution at 2 ug/ml)

Biorbyt Ltd.

7 Signet Court, Swann Road
Cambridge
CB5 8LA
United Kingdom

Email: info@biorbyt.com, support@biorbyt.com

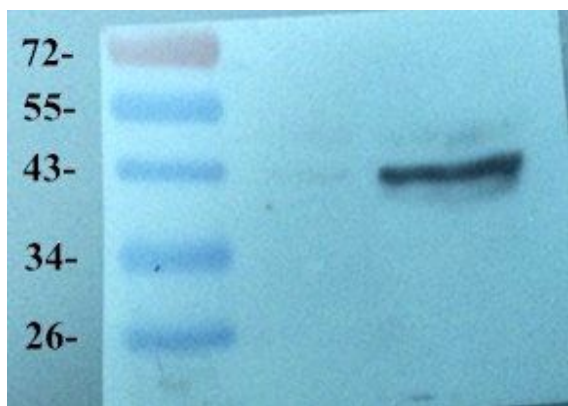
Phone: +44 (0)1223 859353 | Fax: +1 (415) 651-8558

Biorbyt LLC

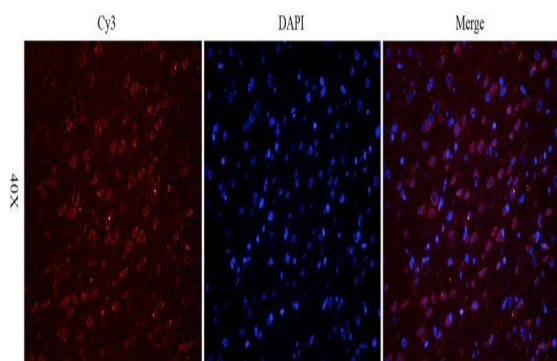
68 TW Alexander Drive
Research Triangle Park
Durham
NC 27713
United States

Email: info@biorbyt.com, support@biorbyt.com

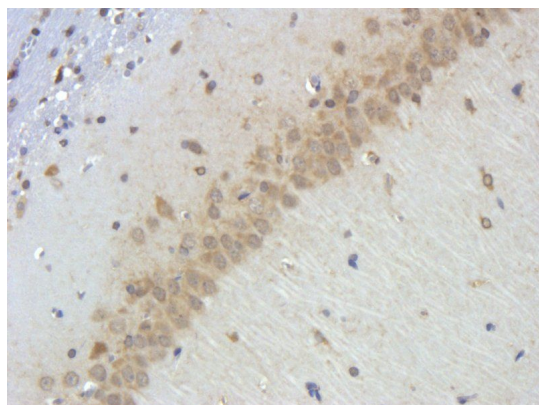
Phone: +1 (415) 906-5211 | Fax: +1 (415) 651-8558



WB analysis of Rat brain tissue using Melatonin Receptor (dilution of primary antibody - 2 ug/ml)



Immunofluorescence image of rat brain tissue using anti-Melatonin receptor 1A (dilution at 1:300)



IHC-P staining of rat brain hippocampus layer tissue using anti-Melatonin receptor 1A (dilution at 1:500)

Biorbyt Ltd.

7 Signet Court, Swann Road
Cambridge
CB5 8LA
United Kingdom

Email: info@biorbyt.com, support@biorbyt.com

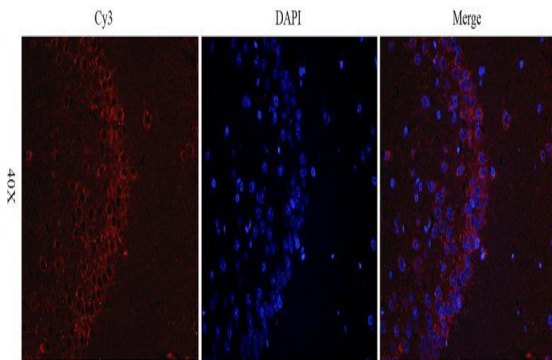
Phone: +44 (0)1223 859353 | Fax: +1 (415) 651-8558

Biorbyt LLC

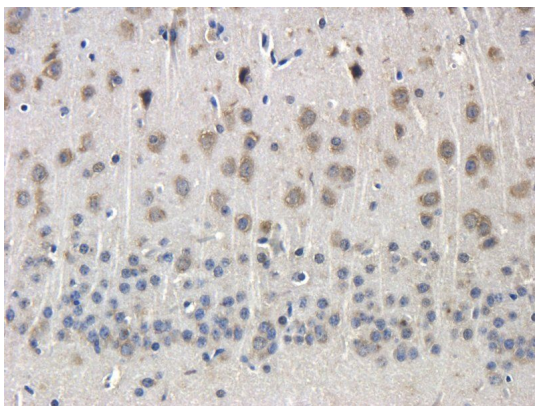
68 TW Alexander Drive
Research Triangle Park
Durham
NC 27713
United States

Email: info@biorbyt.com, support@biorbyt.com

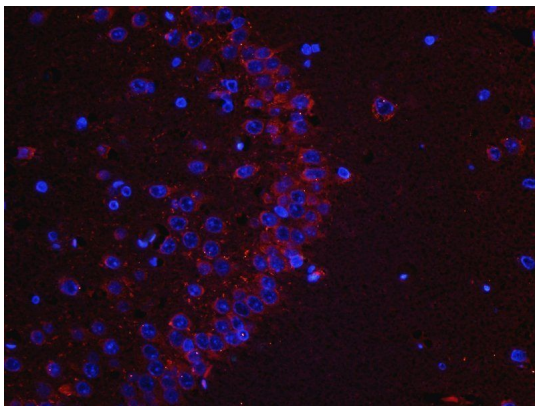
Phone: +1 (415) 906-5211 | Fax: +1 (415) 651-8558



IF image of rat brain hippocampus layer tissue using anti-Melatonin receptor 1A (primary antibody at 1:300)



Immunohistochemical staining of mouse brain tissue using Melatonin receptor 1A antibody (dilution of primary antibody - 1:300)



Immunofluorescence analysis of rat brain hippocampus layer tissue using Melatonin receptor 1A antibody (dilution of primary antibody - 1:300)

Biorbyt Ltd.

7 Signet Court, Swann Road
Cambridge
CB5 8LA
United Kingdom

Email: info@biorbyt.com, support@biorbyt.com

Phone: [+44 \(0\)1223 859353](tel:+44(0)1223859353) | Fax: [+1 \(415\) 651-8558](tel:+1(415)651-8558)

Biorbyt LLC

68 TW Alexander Drive
Research Triangle Park
Durham
NC 27713
United States

Email: info@biorbyt.com, support@biorbyt.com

Phone: [+1 \(415\) 906-5211](tel:+1(415)906-5211) | Fax: [+1 \(415\) 651-8558](tel:+1(415)651-8558)