

Product Datasheet

Leptin Receptor Rabbit Polyclonal Antibody (orb10980)

Catalog Number	orb10980
Category	Antibodies
Description	Leptin Receptor Rabbit Polyclonal Antibody is an unconjugated antibody that specifically recognizes Leptin Receptor. Generated against a KLH conjugated synthetic peptide derived from human Leptin Receptor. The peptide is available as orb374731. It is supplied in liquid form and exhibits reactivity with Human, Mouse, Porcine and Rat samples. The suitable applications for this antibody are ICC, IF, IHC-P and WB.
Target	Leptin Receptor
Clonality	Polyclonal
Species/Host	Rabbit
Isotype	IgG
Conjugation	Unconjugated
Reactivity	Human, Mouse, Porcine, Rat
Form/Appearance	10 mM PBS, 0.02% sodium azide
Concentration	- 100 µg (in 200 µl): 0.5 mg/ml- 200 µg (in 400 µl): 0.5 mg/ml
Purity	Polyclonal antibodies are purified by peptide affinity chromatography
Immunogen	KLH conjugated synthetic peptide derived from human Leptin Receptor. Please contact us for the exact immunogen sequence. The peptide is available as orb374731.

Biorbyt Ltd.

7 Signet Court, Swann Road
Cambridge
CB5 8LA
United Kingdom

Email: info@biorbyt.com, support@biorbyt.com

Phone: [+44 \(0\)1223 859353](tel:+44(0)1223859353) | Fax: [+1 \(415\) 651-8558](tel:+1(415)651-8558)

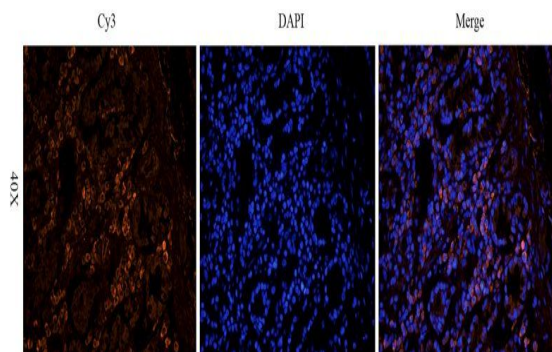
Biorbyt LLC

68 TW Alexander Drive
Research Triangle Park
Durham
NC 27713-2847
United States

Email: info@biorbyt.com, support@biorbyt.com

Phone: [+1 \(415\) 906-5211](tel:+1(415)906-5211) | Fax: [+1 \(415\) 651-8558](tel:+1(415)651-8558)

UniProt ID	P48356, Q62959, P48357
RRID	AB_10753463
MW	132 kDa
Tested applications	ICC, IF, IHC-P, WB
Dilution range	WB: 1:100-1000, IHC-P: 1:100-500, IF/ICC: 1:100-800 (based on 0.5 mg/ml)
Storage	Maintain refrigerated at 2-8°C for up to 2 weeks. For long term storage store at -20°C in small aliquots to prevent freeze-thaw cycles.
Note	For research use only
Entrez	3953
NCBI	11, 001003679, 31
Expiration Date	12 months from date of receipt.



Immunofluorescence analysis of pig small intestines tissue using Leptin Receptor antibody (2.5 ug/ml)

Biorbyt Ltd.

7 Signet Court, Swann Road
Cambridge
CB5 8LA
United Kingdom

Email: info@biorbyt.com, support@biorbyt.com

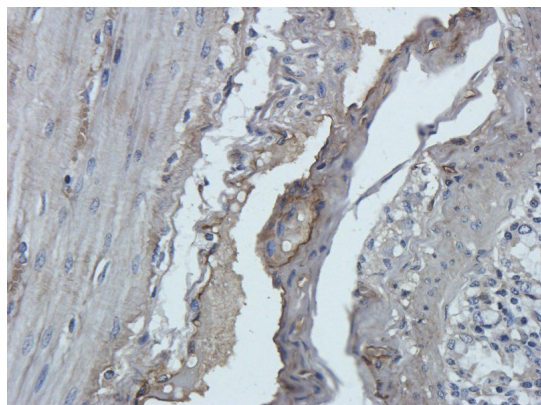
Phone: [+44 \(0\)1223 859353](tel:+44(0)1223859353) | Fax: [+1 \(415\) 651-8558](tel:+1(415)651-8558)

Biorbyt LLC

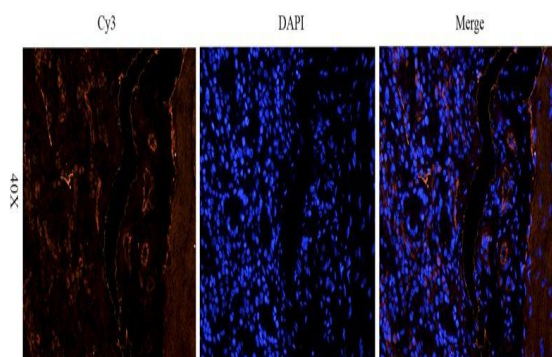
68 TW Alexander Drive
Research Triangle Park
Durham
NC 27713-2847
United States

Email: info@biorbyt.com, support@biorbyt.com

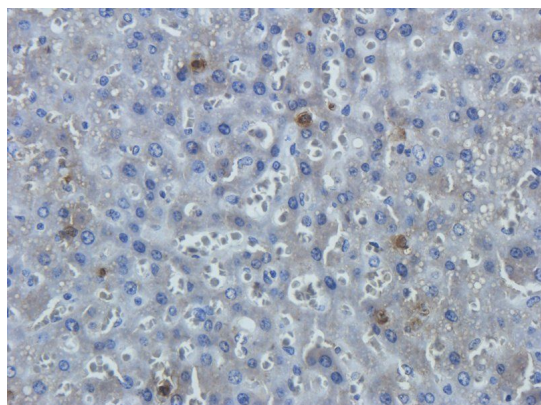
Phone: [+1 \(415\) 906-5211](tel:+1(415)906-5211) | Fax: [+1 \(415\) 651-8558](tel:+1(415)651-8558)



IHC-P staining of pig small intestines tissue using Leptin Receptor antibody (2.5 ug/ml)



IF image of pig small intestines tissue using Leptin Receptor antibody (2.5 ug/ml)



IHC-P image of rat liver tissue using anti-Leptin Receptor (2.5 ug/ml)

Biorbyt Ltd.

7 Signet Court, Swann Road
Cambridge
CB5 8LA
United Kingdom

Email: info@biorbyt.com, support@biorbyt.com

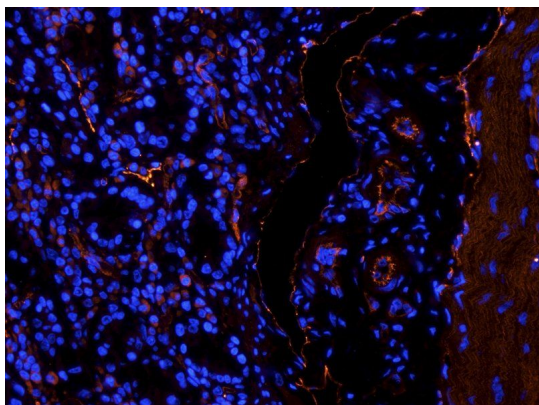
Phone: [+44 \(0\)1223 859353](tel:+44(0)1223859353) | Fax: [+1 \(415\) 651-8558](tel:+1(415)651-8558)

Biorbyt LLC

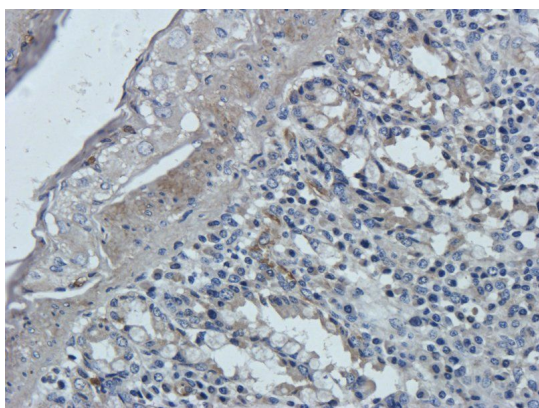
68 TW Alexander Drive
Research Triangle Park
Durham
NC 27713-2847
United States

Email: info@biorbyt.com, support@biorbyt.com

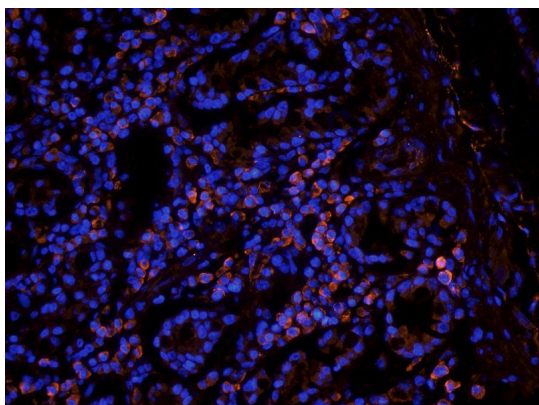
Phone: [+1 \(415\) 906-5211](tel:+1(415)906-5211) | Fax: [+1 \(415\) 651-8558](tel:+1(415)651-8558)



IF analysis of pig small intestines tissue using anti-Leptin Receptor (2.5 ug/ml)



Immunohistochemical staining of pig small intestines tissue using Leptin Receptor antibody (2.5 ug/ml)



Immunofluorescence image of pig small intestines tissue using Leptin Receptor antibody (2.5 ug/ml)

Biorbyt Ltd.

7 Signet Court, Swann Road
Cambridge
CB5 8LA
United Kingdom

Email: info@biorbyt.com, support@biorbyt.com

Phone: [+44 \(0\)1223 859353](tel:+44(0)1223859353) | Fax: [+1 \(415\) 651-8558](tel:+1(415)651-8558)

Biorbyt LLC

68 TW Alexander Drive
Research Triangle Park
Durham
NC 27713-2847
United States

Email: info@biorbyt.com, support@biorbyt.com

Phone: [+1 \(415\) 906-5211](tel:+1(415)906-5211) | Fax: [+1 \(415\) 651-8558](tel:+1(415)651-8558)