

Product Datasheet

Anti-EpCAM [KS1/4] (orb1089960)

| | |
|-----------------------------|--|
| Catalog Number | orb1089960 |
| Category | Antibodies |
| Description | Rabbit monoclonal antibody to EpCAM |
| Target | EpCAM |
| Clonality | Monoclonal |
| Species/Host | Mouse |
| Isotype | Mouse IgG |
| Conjugation | Unconjugated |
| Reactivity | Human |
| Concentration | 1 mg/ml |
| Buffer/Preservatives | PBS with 0.02% Proclin 300. |
| Purity | Purified |
| Immunogen | The original antibody was generated by immunizing BALB/c mice with human adenocarcinoma of the lung cell line UCLA P3. |
| UniProt ID | P16422 |
| Tested applications | ELISA, FC |
| Specificity | This antibody binds to the EpCAM receptor which is expressed on surface of adenocarcinomas and almost all epithelial cell membranes except mesodermal and neural cell membranes. |

Biorbyt Ltd.

7 Signet Court, Swann Road
Cambridge
CB5 8LA
United Kingdom

Email: info@biorbyt.com, support@biorbyt.com

Phone: [+44 \(0\)1223 859353](tel:+44(0)1223859353) | Fax: [+1 \(415\) 651-8558](tel:+1(415)651-8558)

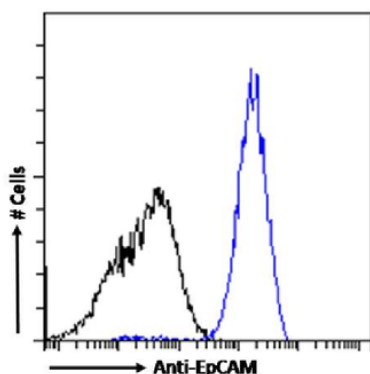
Biorbyt LLC

68 TW Alexander Drive
Research Triangle Park
Durham
NC 27713
United States

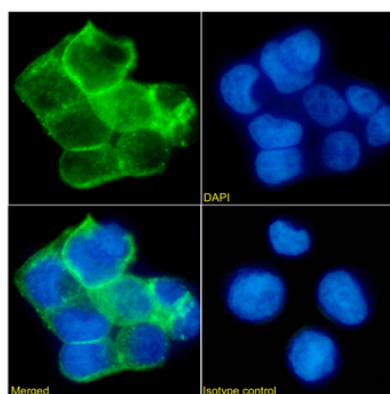
Email: info@biorbyt.com, support@biorbyt.com

Phone: [+1 \(415\) 906-5211](tel:+1(415)906-5211) | Fax: [+1 \(415\) 651-8558](tel:+1(415)651-8558)

| | |
|------------------------|---|
| Clone Number | KS1/4 |
| Storage | Maintain refrigerated at 2-8°C for up to 2 weeks. For long term storage store at -20°C in small aliquots to prevent freeze-thaw cycles. |
| Note | For research use only |
| Expiration Date | 12 months from date of receipt. |



Flow cytometry using the Anti-EpCAM antibody KS1/4. Paraformaldehyde fixed Caco-2 cells were stained with anti-unknown specificity antibody (orb256458; isotype control, black line) or the rabbit IgG version of KS1/4 (orb1089960, blue line) at a dilution of 1:100 for 1h at RT. After washing, the bound antibody was detected using a goat anti-rabbit IgG AlexaFluor® 488 antibody at a dilution of 1:1000 and cells analyzed using a FACSCanto flow-cytometer.



Immunofluorescence staining of Caco-2 cells with anti_EpCAM KS1/4. Immunofluorescence analysis of paraformaldehyde fixed Caco-2 cells stained with the chimeric rabbit IgG version of KS1/4 (orb1089960) (1:100 dilution) for 1h followed by Alexa Fluor® 488 secondary antibody (1:1000 dilution), showing membrane staining. The nuclear stain is DAPI (blue). Panels show from left-right, top-bottom orb1089960, DAPI, merged channels and an isotype control. The isotype control was an unknown specificity antibody (orb256458) followed by staining with Alexa Fluor® 488 secondary antibody.

Biorbyt Ltd.

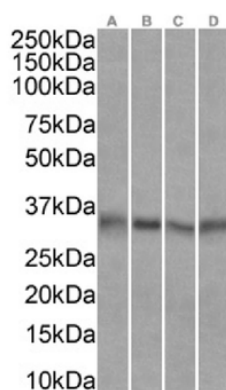
7 Signet Court, Swann Road
Cambridge
CB5 8LA
United Kingdom

Email: info@biorbyt.com, support@biorbyt.com
Phone: +44 (0)1223 859353 | Fax: +1 (415) 651-8558

Biorbyt LLC

68 TW Alexander Drive
Research Triangle Park
Durham
NC 27713
United States

Email: info@biorbyt.com, support@biorbyt.com
Phone: +1 (415) 906-5211 | Fax: +1 (415) 651-8558



Western Blot using Anti-EpCAM antibody KS1/4. A431(A), Caco-2(B), MCF7(C) and HepG2(D) cell lysates (35 µg protein in RIPA buffer) were resolved on a SDS PAGE gel and blots were probed with the chimeric rabbit version of KS1/4 (orb1089960) at 2 µg/ml before detection using an anti-rabbit secondary antibody. A primary incubation of 1h was used and protein was detected by chemiluminescence.

Biorbyt Ltd.

7 Signet Court, Swann Road
Cambridge
CB5 8LA
United Kingdom

Email: info@biorbyt.com, support@biorbyt.com

Phone: [+44 \(0\)1223 859353](tel:+44(0)1223859353) | Fax: [+1 \(415\) 651-8558](tel:+1(415)651-8558)

Biorbyt LLC

68 TW Alexander Drive
Research Triangle Park
Durham
NC 27713
United States

Email: info@biorbyt.com, support@biorbyt.com

Phone: [+1 \(415\) 906-5211](tel:+1(415)906-5211) | Fax: [+1 \(415\) 651-8558](tel:+1(415)651-8558)