

Product Datasheet

Anti-SETD7 [RAB-C220] (orb1089925)

Catalog Number	orb1089925
Category	Antibodies
Description	Human polyclonal antibody to SETD7
Target	SETD7
Clonality	Monoclonal
Species/Host	Human
Isotype	Fab fragment
Conjugation	Unconjugated
Reactivity	Human
Concentration	1 mg/ml
Buffer/Preservatives	PBS with 0.02% Proclin 300.
Purity	Purified
Immunogen	This antibody was obtained by recombinant antibody (rAb) phage display recognizing SETD7 protein under non-denaturing conditions.
UniProt ID	Q8WTS6
Tested applications	ChIP, ELISA, FC, IF, IP

Biorbyt Ltd.

7 Signet Court, Swann Road
Cambridge
CB5 8LA
United Kingdom

Email: info@biorbyt.com, support@biorbyt.com
Phone: [+44 \(0\)1223 859353](tel:+44(0)1223859353) | Fax: [+1 \(415\) 651-8558](tel:+1(415)651-8558)

Biorbyt LLC

68 TW Alexander Drive
Research Triangle Park
Durham
NC 27713-2847
United States

Email: info@biorbyt.com, support@biorbyt.com
Phone: [+1 \(415\) 906-5211](tel:+1(415)906-5211) | Fax: [+1 \(415\) 651-8558](tel:+1(415)651-8558)

Specificity

This antibody recognizes SETD7 (Histone-lysine N-methyltransferase SETD7). It binds to a folded domain, amino acids 2-366. SETD7 is a histone methyltransferase that specifically monomethylates 'Lys-4' of histone H3. H3 'Lys-4' methylation represents a specific tag for epigenetic transcriptional activation. It plays a central role in the transcriptional activation of genes such as collagenase or insulin.

Clone Number

RAB-C220

Storage

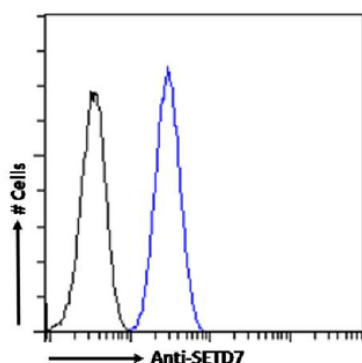
Maintain refrigerated at 2-8°C for up to 2 weeks. For long term storage store at -20°C in small aliquots to prevent freeze-thaw cycles.

Note

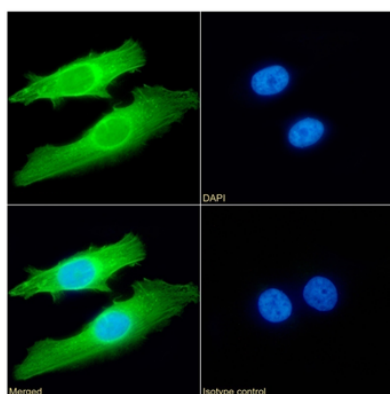
For research use only

Expiration Date

12 months from date of receipt.



Flow cytometry using the Anti-SETD7 antibody RAB-C220. Paraformaldehyde fixed HeLa cells permeabilized with 0.5% Triton were stained with anti-unknown specificity antibody (orb256458; isotype control, black line) or the rabbit IgG version of RAB-C220 (orb1089948, blue line) at a dilution of 1:100 for 1h at RT. After washing, the bound antibody was detected using a goat anti-rabbit IgG AlexaFluor® 488 antibody at a dilution of 1:1000 and cells analyzed using a FACSCanto flow-cytometer.



Immunofluorescence staining of HeLa cells with anti-SETD7 RAB-C220. Immunofluorescence analysis of paraformaldehyde fixed HeLa cells permeabilized with 0.15% Triton stained with the chimeric rabbit IgG version of RAB-C220 (orb1089948) (1:100 dilution) for 1h followed by Alexa Fluor® 488 secondary antibody (1:1500 dilution), showing cytoplasmic staining. The nuclear stain is DAPI (blue). Panels show from left-right, top-bottom orb1089948, DAPI, merged channels and an isotype control. The isotype control was an unknown specificity antibody (orb256458) followed by staining with Alexa Fluor® 488 secondary antibody.

Biorbyt Ltd.

7 Signet Court, Swann Road
Cambridge
CB5 8LA
United Kingdom

Email: info@biorbyt.com, support@biorbyt.com

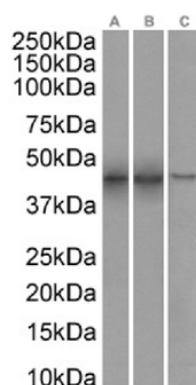
Phone: +44 (0)1223 859353 | Fax: +1 (415) 651-8558

Biorbyt LLC

68 TW Alexander Drive
Research Triangle Park
Durham
NC 27713-2847
United States

Email: info@biorbyt.com, support@biorbyt.com

Phone: +1 (415) 906-5211 | Fax: +1 (415) 651-8558



Western Blot using anti-SETD7 antibody RAB-C220. Nuclear lysate of MCF7(A) (0.01 $\mu\text{g/ml}$), Jurkat(B) (0.1 $\mu\text{g/ml}$) cells and A549(C) (0.03 $\mu\text{g/ml}$) cell lysates (35 μg protein in RIPA buffer) were resolved on a SDS PAGE gel and blots were probed with the chimeric rabbit version of RAB-C220 (orb1089948) before detection using an anti-rabbit secondary antibody. A primary incubation of 1h was used and protein was detected by chemiluminescence.

Biorbyt Ltd.

7 Signet Court, Swann Road
Cambridge
CB5 8LA
United Kingdom

Email: info@biorbyt.com, support@biorbyt.com

Phone: [+44 \(0\)1223 859353](tel:+44(0)1223859353) | Fax: [+1 \(415\) 651-8558](tel:+1(415)651-8558)

Biorbyt LLC

68 TW Alexander Drive
Research Triangle Park
Durham
NC 27713-2847
United States

Email: info@biorbyt.com, support@biorbyt.com

Phone: [+1 \(415\) 906-5211](tel:+1(415)906-5211) | Fax: [+1 \(415\) 651-8558](tel:+1(415)651-8558)