

Product Datasheet

Rat IgG2a Isotype Control FITC Antibody (orb1088487)

| | |
|-----------------------------|---|
| Catalog Number | orb1088487 |
| Category | Antibodies |
| Description | Rat IgG2a Isotype Control FITC |
| Clonality | Monoclonal |
| Isotype | Rat IgG2a |
| Conjugation | FITC |
| Concentration | 1 mg/ml |
| Buffer/Preservatives | Phosphate buffered saline (PBS), pH 7.4, 15 mM sodium azide |
| Purification | Purified antibody is conjugated with fluorescein isothiocyanate (FITC) under optimum conditions and unconjugated antibody and free fluorochrome are removed by size-exclusion chromatography. |
| Tested applications | FC |
| Application notes | Negative control: The reagent is intended as an isotype control to establish the amount of non-specific antibody binding. For your particular experiment, use the same concentration of this control antibody as the recommended working concentration of the antigen-specific antibody. Also, when working with prediluted antibodies, dilute the isotype control to the same concentration as is the concentration of the antigen-specific antibody in the prediluted antibody solution you are using. If under particular experimental conditions the background signal of the isotype control is too high (usually when working concentrations of used antibodies are above 10 µg/ml of incubation mixture), change the conditions of your experiment to reduce the background. |

Biorbyt Ltd.

7 Signet Court, Swann Road
Cambridge
CB5 8LA
United Kingdom

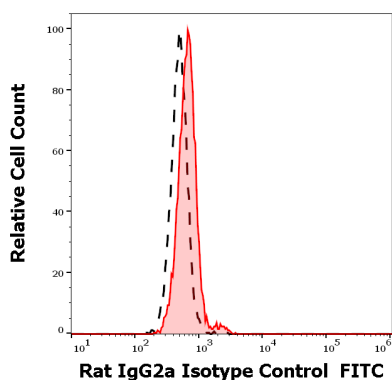
Email: info@biorbyt.com, support@biorbyt.com
Phone: [+44 \(0\)1223 859353](tel:+44(0)1223859353) | Fax: [+1 \(415\) 651-8558](tel:+1(415)651-8558)

Biorbyt LLC

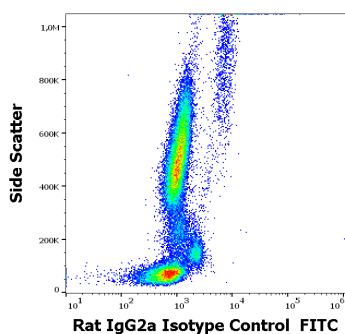
68 TW Alexander Drive
Research Triangle Park
Durham
NC 27713-2847
United States

Email: info@biorbyt.com, support@biorbyt.com
Phone: [+1 \(415\) 906-5211](tel:+1(415)906-5211) | Fax: [+1 \(415\) 651-8558](tel:+1(415)651-8558)

| | |
|------------------------|--|
| Specificity | This rat IgG2a kappa monoclonal antibody (clone RTG2A1-1, also known as G2A-1-1 or KLH/G2A-1-1) detects specifically the hemocyanin of keyhole limpet and can be used as a negative control antibody in other species. |
| Antibody Type | Secondary Antibody |
| Clone Number | RTG2A1-1 |
| Storage | Store at 2-8°C. Protect from prolonged exposure to light. Do not freeze. |
| Note | For research use only |
| Entrez | 35 |
| Expiration Date | 12 months from date of receipt. |



Separation of lymphocytes nonspecific stained using Rat IgG2a Isotype control (RTG2A1-1) FITC antibody (concentration in sample 9 µg/ml) from unstained lymphocytes in flow cytometry analysis.



Flow cytometry surface nonspecific staining pattern of human peripheral whole blood stained using Rat IgG2a Isotype control (RTG2A1-1) FITC antibody (concentration in sample 9 µg/ml).

Biorbyt Ltd.

7 Signet Court, Swann Road
Cambridge
CB5 8LA
United Kingdom

Email: info@biorbyt.com, support@biorbyt.com

Phone: +44 (0)1223 859353 | Fax: +1 (415) 651-8558

Biorbyt LLC

68 TW Alexander Drive
Research Triangle Park
Durham
NC 27713-2847
United States

Email: info@biorbyt.com, support@biorbyt.com

Phone: +1 (415) 906-5211 | Fax: +1 (415) 651-8558