

## Product Datasheet

### Dog Ki-67 Protein (Ki67P) ELISA Kit (orb1088153)

<b>Catalog Number</b>	orb1088153
<b>Category</b>	Assays and Kits
<b>Description</b>	<p>The test principle applied in this kit is Sandwich enzyme immunoassay. The microtiter plate provided in this kit has been pre-coated with an antibody specific to Ki-67 Protein(Ki67P). Standards or samples are added to the appropriate microtiter plate wells then with a biotin-conjugated antibody specific to Ki-67 Protein(Ki67P). Next, Avidin conjugated to Horseradish Peroxidase (HRP) is added to each microplate well and incubated. After TMB substrate solution is added, only those wells that contain Ki-67 Protein(Ki67P), biotin-conjugated antibody and enzyme-conjugated Avidin will exhibit a change in color. The enzyme-substrate reaction is terminated by the addition of sulphuric acid solution and the color change is measured spectrophotometrically at a wavelength of 450nm <math>\pm</math> 10nm. The concentration of Ki-67 Protein(Ki67P) in the samples is then determined by comparing the OD of the samples to the standard curve.</p>
<b>Reactivity</b>	Canine
<b>Concentration</b>	20 ng/mL
<b>Application notes</b>	<p>standard: 20 ng/mL. Test principle: The test principle applied in this kit is Sandwich enzyme immunoassay. The microtiter plate provided in this kit has been pre-coated with an antibody specific to Dog Ki67P. Standards or samples are added to the appropriate microtiter plate wells then with a biotin-conjugated antibody specific to Dog Ki67P. Next, Avidin conjugated to Horseradish Peroxidase (HRP) is added to each microplate well and incubated. After TMB substrate solution is added, only those wells that contain Dog Ki67P, biotin-conjugated antibody and enzyme-conjugated Avidin will exhibit a change in color. The enzyme-substrate reaction is terminated by the addition of sulphuric acid solution and the color change is measured spectrophotometrically at a wavelength of 450nm <math>\pm</math> 10nm. The concentration of Dog Ki67P in the samples is then determined by comparing the OD of the samples to the standard curve</p>

**Biorbyt Ltd.**

7 Signet Court, Swann Road  
Cambridge  
CB5 8LA  
United Kingdom

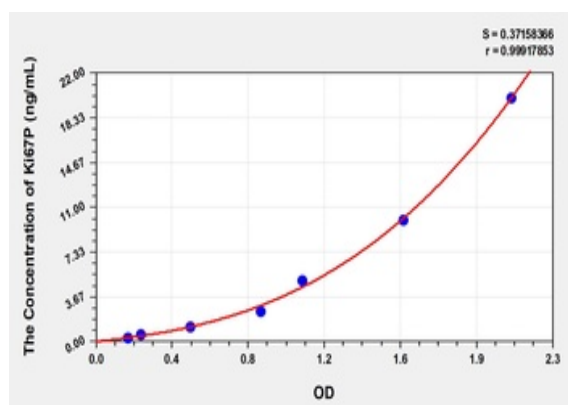
Email: [info@biorbyt.com](mailto:info@biorbyt.com), [support@biorbyt.com](mailto:support@biorbyt.com)  
Phone: [+44 \(0\)1223 859353](tel:+44(0)1223859353) | Fax: [+1 \(415\) 651-8558](tel:+1(415)651-8558)

**Biorbyt LLC**

68 TW Alexander Drive  
Research Triangle Park  
Durham  
NC 27713-2847  
United States

Email: [info@biorbyt.com](mailto:info@biorbyt.com), [support@biorbyt.com](mailto:support@biorbyt.com)  
Phone: [+1 \(415\) 906-5211](tel:+1(415)906-5211) | Fax: [+1 \(415\) 651-8558](tel:+1(415)651-8558)

<b>Assay Type</b>	Sandwich
<b>Assay Time</b>	3.5h
<b>Range</b>	0.32-20 ng/mL
<b>Sensitivity</b>	0.114 ng/mL
<b>Sample Types</b>	Tissue homogenates, cell lysates and other biological fluids.
<b>Note</b>	For research use only
<b>Expiration Date</b>	Please enquire.



Standard curve for orb1088153 ELISA kit.

**Biorbyt Ltd.**

7 Signet Court, Swann Road  
Cambridge  
CB5 8LA  
United Kingdom

Email: [info@biorbyt.com](mailto:info@biorbyt.com), [support@biorbyt.com](mailto:support@biorbyt.com)

Phone: [+44 \(0\)1223 859353](tel:+44(0)1223859353) | Fax: [+1 \(415\) 651-8558](tel:+1(415)651-8558)

**Biorbyt LLC**

68 TW Alexander Drive  
Research Triangle Park  
Durham  
NC 27713-2847  
United States

Email: [info@biorbyt.com](mailto:info@biorbyt.com), [support@biorbyt.com](mailto:support@biorbyt.com)

Phone: [+1 \(415\) 906-5211](tel:+1(415)906-5211) | Fax: [+1 \(415\) 651-8558](tel:+1(415)651-8558)