

Product Datasheet

COL2A1 Rabbit Polyclonal Antibody (orb10436)

Catalog Number	orb10436
Category	Antibodies
Description	COL2A1 Rabbit Polyclonal Antibody
Target	COL2A1
Clonality	Polyclonal
Species/Host	Rabbit
Isotype	IgG
Conjugation	Unconjugated
Reactivity	Human, Mouse, Rat
Form/Appearance	10 mM PBS, 0.02% sodium azide
Concentration	- 100 µg (in 200 µl): 0.5 mg/ml- 200 µg (in 400 µl): 0.5 mg/ml
Purity	Polyclonal antibodies are purified by peptide affinity chromatography
Immunogen	KLH conjugated synthetic peptide derived from human COL2A1. Please contact us for the exact immunogen sequence. The peptide is available as orb374716.
UniProt ID	P05539, P02458, P28481
RRID	AB_10753183
MW	117 kDa
Tested applications	ELISA, ICC, IF, IHC-P, WB

Biorbyt Ltd.

7 Signet Court, Swann Road
Cambridge
CB5 8LA
United Kingdom

Email: info@biorbyt.com, support@biorbyt.com

Phone: [+44 \(0\)1223 859353](tel:+44(0)1223859353) | Fax: [+1 \(415\) 651-8558](tel:+1(415)651-8558)

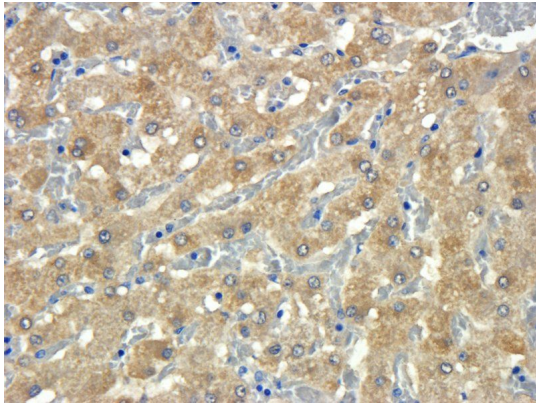
Biorbyt LLC

68 TW Alexander Drive
Research Triangle Park
Durham
NC 27713
United States

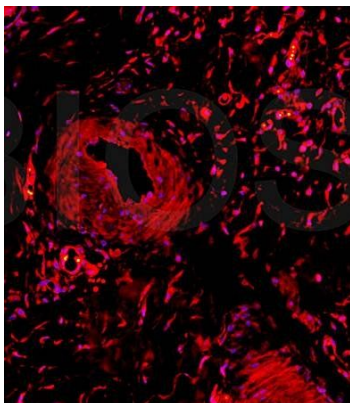
Email: info@biorbyt.com, support@biorbyt.com

Phone: [+1 \(415\) 906-5211](tel:+1(415)906-5211) | Fax: [+1 \(415\) 651-8558](tel:+1(415)651-8558)

Dilution range	WB:1:200, IF/ICC: 1:300, IHC-P:1:300 (based on 0.5 mg/ml)
Application notes	A customer has successfully used this antibody in IHC
Storage	Maintain refrigerated at 2-8°C for up to 2 weeks. For long term storage store at -20°C in small aliquots to prevent freeze-thaw cycles.
Note	For research use only
Entrez	1280
NCBI	31, 41, 001844, 001835
Expiration Date	12 months from date of receipt.



IHC-P staining of pig liver tissue using Collagen II antibody (dilution at 1:300)



IF analysis of rabbit meniscus tissue using Collagen II antibody (dilution of primary antibody at 1:300)

Biorbyt Ltd.

7 Signet Court, Swann Road
Cambridge
CB5 8LA
United Kingdom

Email: info@biorbyt.com, support@biorbyt.com

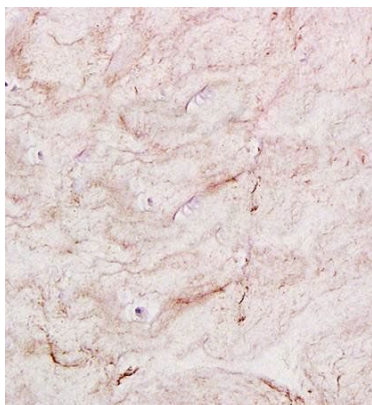
Phone: [+44 \(0\)1223 859353](tel:+44(0)1223859353) | Fax: [+1 \(415\) 651-8558](tel:+1(415)651-8558)

Biorbyt LLC

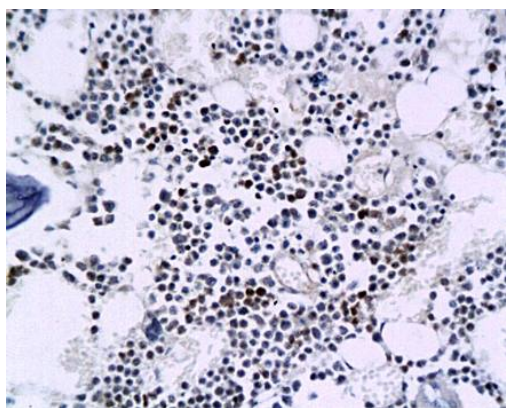
68 TW Alexander Drive
Research Triangle Park
Durham
NC 27713
United States

Email: info@biorbyt.com, support@biorbyt.com

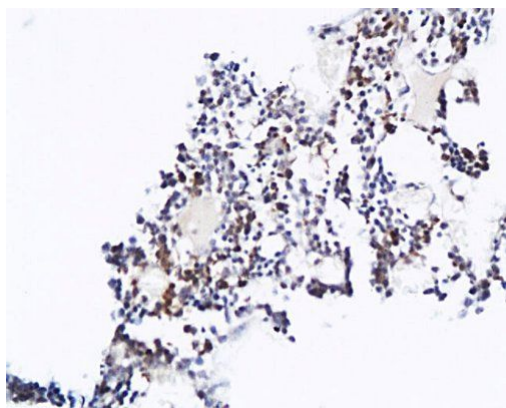
Phone: [+1 \(415\) 906-5211](tel:+1(415)906-5211) | Fax: [+1 \(415\) 651-8558](tel:+1(415)651-8558)



Immunohistochemical analysis of formalin fixed and paraffin embedded rat intervertebral disc using Collagen II antibody (primary antibody at 1:300)



Immunohistochemical analysis of paraffin-embedded collagen of rat knee joint using Collagen II antibody (dilution of primary antibody - 1:300)



IHC-P of rat knee joint collagen (Collagen II antibody at 1:200)

Biorbyt Ltd.

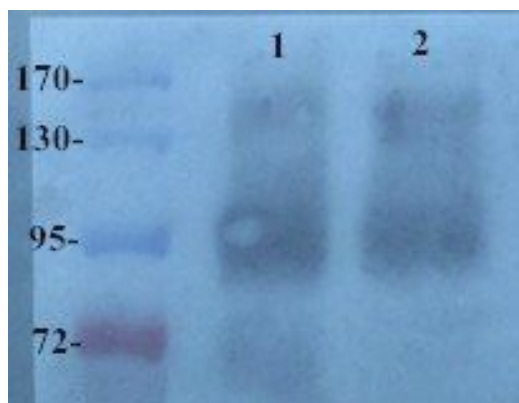
7 Signet Court, Swann Road
Cambridge
CB5 8LA
United Kingdom

Email: info@biorbyt.com, support@biorbyt.com
Phone: [+44 \(0\)1223 859353](tel:+44(0)1223859353) | Fax: [+1 \(415\) 651-8558](tel:+1(415)651-8558)

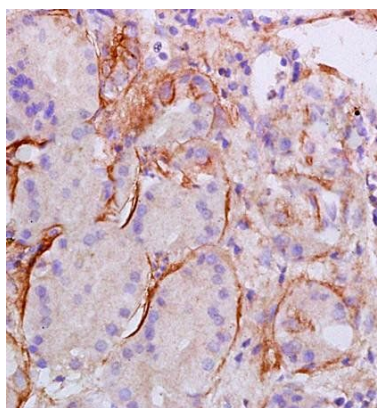
Biorbyt LLC

68 TW Alexander Drive
Research Triangle Park
Durham
NC 27713
United States

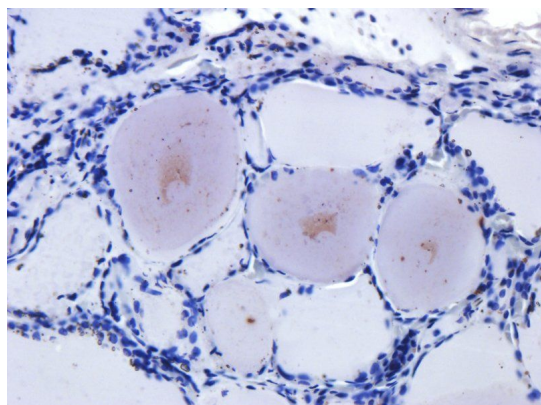
Email: info@biorbyt.com, support@biorbyt.com
Phone: [+1 \(415\) 906-5211](tel:+1(415)906-5211) | Fax: [+1 \(415\) 651-8558](tel:+1(415)651-8558)



Western blot analysis of human breast cancer (Lane 1), breast cancer (Lane 2) using Collagen II antibody (primary antibody at 1:200)



IHC-P of human esophageal carcinoma (Collagen II antibody at 1:300)



Immunohistochemical staining of paraffin embedded human thyroid carcinoma tissue using Collagen II antibody (primary antibody at 1:300)

Biorbyt Ltd.

7 Signet Court, Swann Road
Cambridge
CB5 8LA
United Kingdom

Email: info@biorbyt.com, support@biorbyt.com

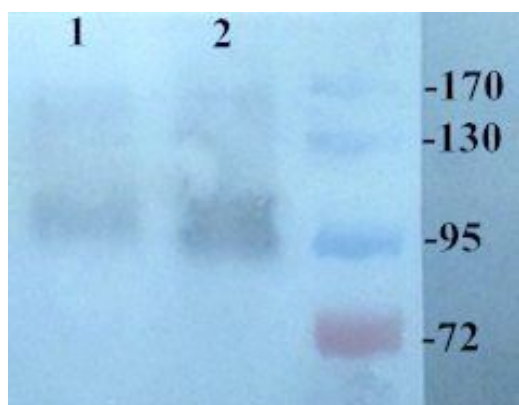
Phone: +44 (0)1223 859353 | Fax: +1 (415) 651-8558

Biorbyt LLC

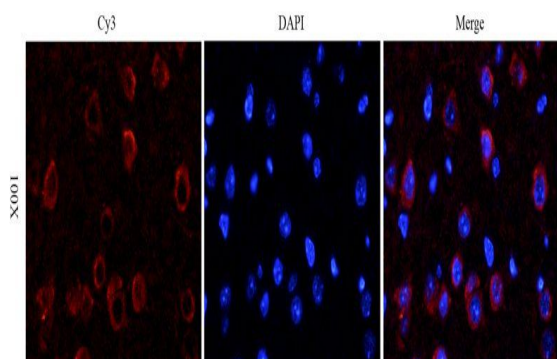
68 TW Alexander Drive
Research Triangle Park
Durham
NC 27713
United States

Email: info@biorbyt.com, support@biorbyt.com

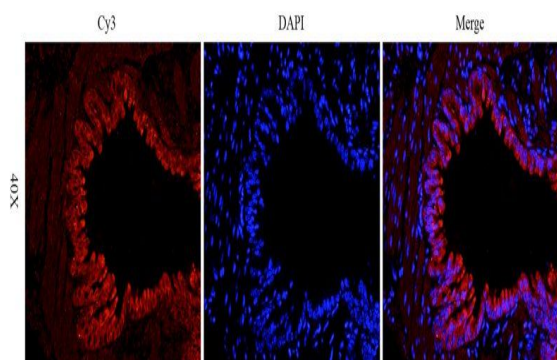
Phone: +1 (415) 906-5211 | Fax: +1 (415) 651-8558



WB analysis of human breast cancer (Lane 1), breast cancer (Lane 2) using Collagen II antibody (dilution of primary antibody - 1:100)



Immunofluorescence analysis of mouse brain tissue using anti-Collagen II (dilution of primary antibody - 1:300)



IF image of mouse lung tissue using anti-Collagen II (primary antibody at 1:300)

Biorbyt Ltd.

7 Signet Court, Swann Road
Cambridge
CB5 8LA
United Kingdom

Email: info@biorbyt.com, support@biorbyt.com

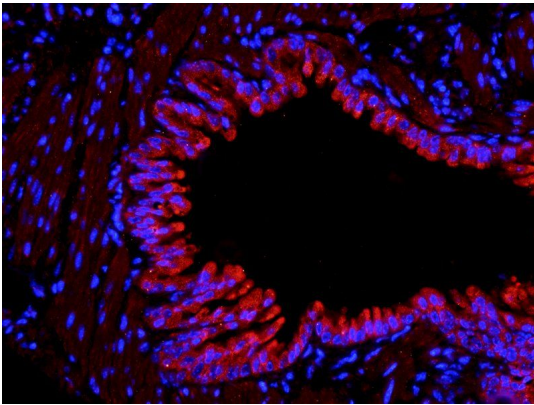
Phone: [+44 \(0\)1223 859353](tel:+44(0)1223859353) | Fax: [+1 \(415\) 651-8558](tel:+1(415)651-8558)

Biorbyt LLC

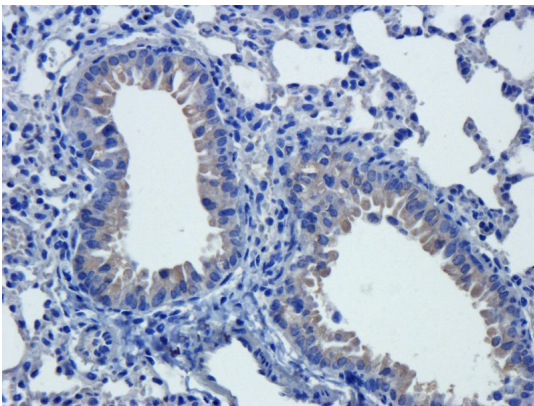
68 TW Alexander Drive
Research Triangle Park
Durham
NC 27713
United States

Email: info@biorbyt.com, support@biorbyt.com

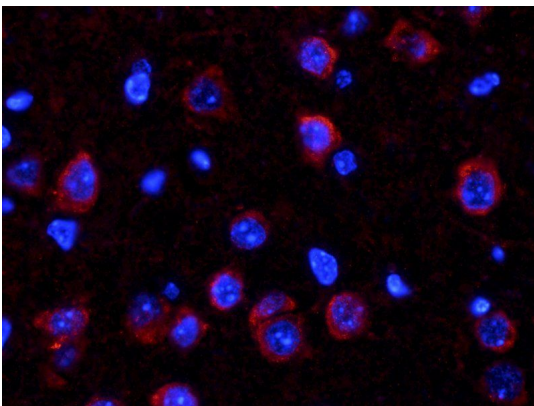
Phone: [+1 \(415\) 906-5211](tel:+1(415)906-5211) | Fax: [+1 \(415\) 651-8558](tel:+1(415)651-8558)



IF analysis of mouse lung tissue using Collagen II antibody (dilution of primary antibody at 1:300)



Immunohistochemical staining of mouse lung tissue using anti-Collagen II (dilution of primary antibody - 1:300)



Immunofluorescence image of mouse brain tissue using anti-Collagen II (dilution at 1:300)

Biorbyt Ltd.

7 Signet Court, Swann Road
Cambridge
CB5 8LA
United Kingdom

Email: info@biorbyt.com, support@biorbyt.com

Phone: [+44 \(0\)1223 859353](tel:+44(0)1223859353) | Fax: [+1 \(415\) 651-8558](tel:+1(415)651-8558)

Biorbyt LLC

68 TW Alexander Drive
Research Triangle Park
Durham
NC 27713
United States

Email: info@biorbyt.com, support@biorbyt.com

Phone: [+1 \(415\) 906-5211](tel:+1(415)906-5211) | Fax: [+1 \(415\) 651-8558](tel:+1(415)651-8558)