

## Product Datasheet

# Sialoadhesin Rabbit Polyclonal Antibody (orb10301)

<b>Catalog Number</b>	orb10301
<b>Category</b>	Antibodies
<b>Description</b>	Sialoadhesin Rabbit Polyclonal Antibody is an unconjugated antibody that specifically recognizes Sialoadhesin. Generated against a KLH conjugated synthetic peptide derived from human Sialoadhesin. The peptide is available as orb374709. It is supplied in liquid form and exhibits reactivity with Mouse and Rat samples. The suitable applications for this antibody are IHC-P and WB.
<b>Target</b>	Sialoadhesin
<b>Clonality</b>	Polyclonal
<b>Species/Host</b>	Rabbit
<b>Isotype</b>	IgG
<b>Conjugation</b>	Unconjugated
<b>Reactivity</b>	Mouse, Rat
<b>Form/Appearance</b>	10 mM PBS, 0.02% sodium azide
<b>Concentration</b>	- 100 µg (in 200 µl): 0.5 mg/ml- 200 µg (in 400 µl): 0.5 mg/ml
<b>Purity</b>	Polyclonal antibodies are purified by peptide affinity chromatography
<b>Immunogen</b>	KLH conjugated synthetic peptide derived from human Sialoadhesin. Please contact us for the exact immunogen sequence. The peptide is available as orb374709.
<b>UniProt ID</b>	<b>Q62230</b>

**Biorbyt Ltd.**

7 Signet Court, Swann Road  
Cambridge  
CB5 8LA  
United Kingdom

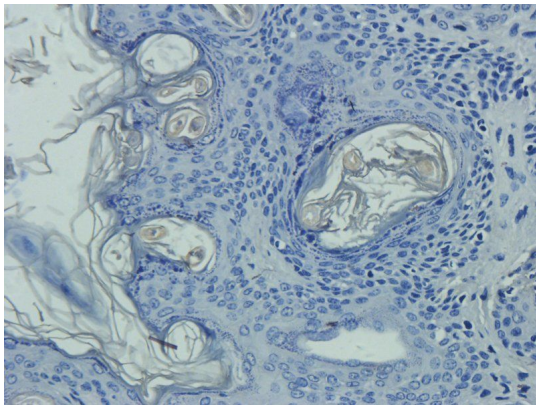
Email: [info@biorbyt.com](mailto:info@biorbyt.com), [support@biorbyt.com](mailto:support@biorbyt.com)  
Phone: [+44 \(0\)1223 859353](tel:+44(0)1223859353) | Fax: [+1 \(415\) 651-8558](tel:+1(415)651-8558)

**Biorbyt LLC**

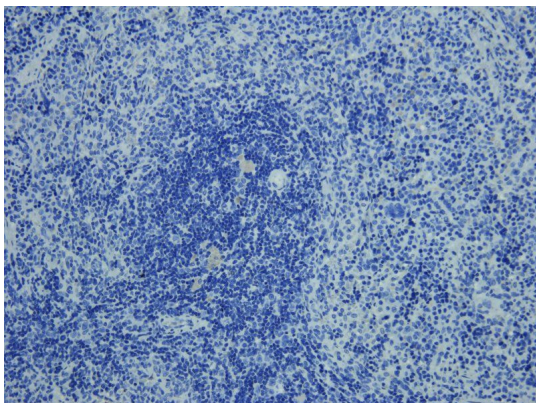
68 TW Alexander Drive  
Research Triangle Park  
Durham  
NC 27713-2847  
United States

Email: [info@biorbyt.com](mailto:info@biorbyt.com), [support@biorbyt.com](mailto:support@biorbyt.com)  
Phone: [+1 \(415\) 906-5211](tel:+1(415)906-5211) | Fax: [+1 \(415\) 651-8558](tel:+1(415)651-8558)

<b>RRID</b>	AB_10753453
<b>MW</b>	183 kDa
<b>Tested applications</b>	IHC-P, WB
<b>Dilution range</b>	IHC-P: 1:50-300, WB: 1:100-2000
<b>Storage</b>	Maintain refrigerated at 2-8°C for up to 2 weeks. For long term storage store at -20°C in small aliquots to prevent freeze-thaw cycles.
<b>Note</b>	For research use only
<b>Entrez</b>	<b>6614</b>
<b>Expiration Date</b>	12 months from date of receipt.



IHC-P staining of rat skin tissue using anti-Sialoadhesin (2.5 ug/ml)



Immunohistochemical staining of paraffin embedded rat spleen tissue using anti-Sialoadhesin (2.5 ug/ml)

**Biorbyt Ltd.**

7 Signet Court, Swann Road  
Cambridge  
CB5 8LA  
United Kingdom

Email: [info@biorbyt.com](mailto:info@biorbyt.com), [support@biorbyt.com](mailto:support@biorbyt.com)

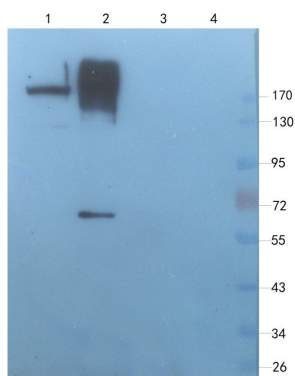
Phone: [+44 \(0\)1223 859353](tel:+44(0)1223859353) | Fax: [+1 \(415\) 651-8558](tel:+1(415)651-8558)

**Biorbyt LLC**

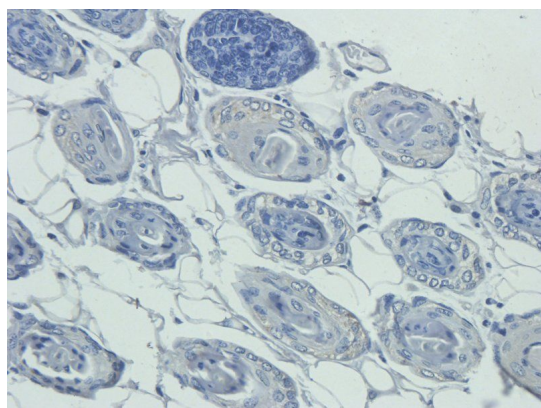
68 TW Alexander Drive  
Research Triangle Park  
Durham  
NC 27713-2847  
United States

Email: [info@biorbyt.com](mailto:info@biorbyt.com), [support@biorbyt.com](mailto:support@biorbyt.com)

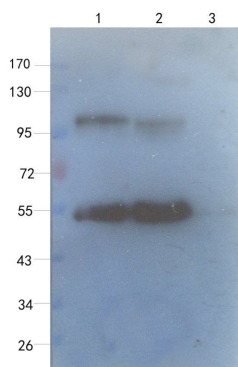
Phone: [+1 \(415\) 906-5211](tel:+1(415)906-5211) | Fax: [+1 \(415\) 651-8558](tel:+1(415)651-8558)



Western blot analysis of rat testis (lane 1), mouse spleen (lane 2), rat colon (lane 3), rat bladder (lane 4), using Sialoadhesin antibody (1 ug/ml)



IHC-P image of rat skin tissue using Sialoadhesin antibody (2.5 ug/ml)



WB analysis of rat lung (lane 1), human breast cancer (lane 2), human thyroid cancer (lane 3), using Sialoadhesin antibody (1 ug/ml)

**Biorbyt Ltd.**

7 Signet Court, Swann Road  
Cambridge  
CB5 8LA  
United Kingdom

Email: [info@biorbyt.com](mailto:info@biorbyt.com), [support@biorbyt.com](mailto:support@biorbyt.com)

Phone: +44 (0)1223 859353 | Fax: +1 (415) 651-8558

**Biorbyt LLC**

68 TW Alexander Drive  
Research Triangle Park  
Durham  
NC 27713-2847  
United States

Email: [info@biorbyt.com](mailto:info@biorbyt.com), [support@biorbyt.com](mailto:support@biorbyt.com)

Phone: +1 (415) 906-5211 | Fax: +1 (415) 651-8558