

Product Datasheet

CD146 antibody (orb10290)

Catalog Number	orb10290
Category	Antibodies
Description	CD146 antibody
Target	CD146
Clonality	Polyclonal
Species/Host	Rabbit
Isotype	IgG
Conjugation	Unconjugated
Reactivity	Human, Mouse, Rat
Form/Appearance	10 mM PBS, 0.02% sodium azide
Concentration	- 100 µg (in 200 µl): 0.5 mg/ml- 200 µg (in 400 µl): 0.5 mg/ml
Purity	Polyclonal antibodies are purified by peptide affinity chromatography
Immunogen	KLH conjugated synthetic peptide derived from human CD146. Please contact us for the exact immunogen sequence. The peptide is available as orb12884.
UniProt ID	Q9EPF2, P43121, Q8R2Y2
RRID	AB_10746790
MW	72 kDa
Tested applications	ICC, IF, IHC-P, WB

Biorbyt Ltd.

7 Signet Court, Swann Road
Cambridge
CB5 8LA
United Kingdom

Email: info@biorbyt.com, support@biorbyt.com

Phone: [+44 \(0\)1223 859353](tel:+44(0)1223859353) | Fax: [+1 \(415\) 651-8558](tel:+1(415)651-8558)

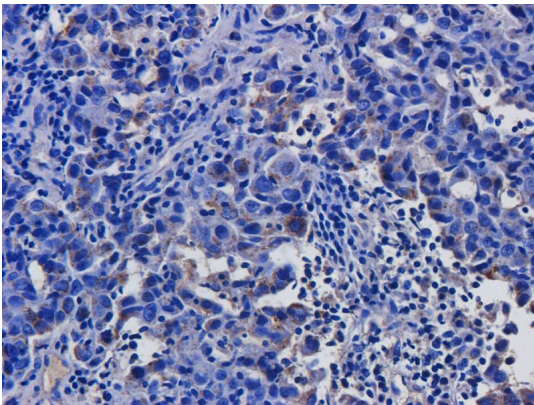
Biorbyt LLC

68 TW Alexander Drive
Research Triangle Park
Durham
NC 27713
United States

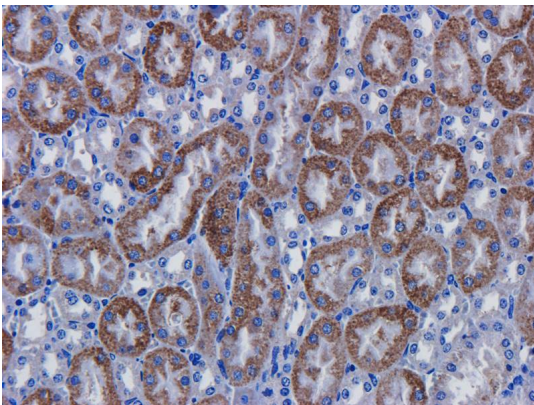
Email: info@biorbyt.com, support@biorbyt.com

Phone: [+1 \(415\) 906-5211](tel:+1(415)906-5211) | Fax: [+1 \(415\) 651-8558](tel:+1(415)651-8558)

Dilution range	IF/ICC: 1:100-600, IHC-P: 1:100-600, WB: 1:200-1000
Storage	Maintain refrigerated at 2-8°C for up to 2 weeks. For long term storage store at -20°C in small aliquots to prevent freeze-thaw cycles.
Note	For research use only
Entrez	4162
Expiration Date	12 months from date of receipt.



Immunohistochemical staining of human breast cancer tissue using CD146 antibody (dilution of primary antibody - 2.5 ug/ml)



Immunohistochemical staining of mouse kidney tissue using anti-CD146 (dilution of primary antibody - 2.5 ug/ml)

Biorbyt Ltd.

7 Signet Court, Swann Road
Cambridge
CB5 8LA
United Kingdom

Email: info@biorbyt.com, support@biorbyt.com

Phone: +44 (0)1223 859353 | Fax: +1 (415) 651-8558

Biorbyt LLC

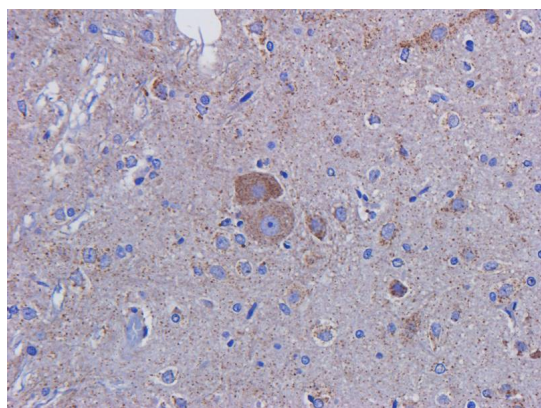
68 TW Alexander Drive
Research Triangle Park
Durham
NC 27713
United States

Email: info@biorbyt.com, support@biorbyt.com

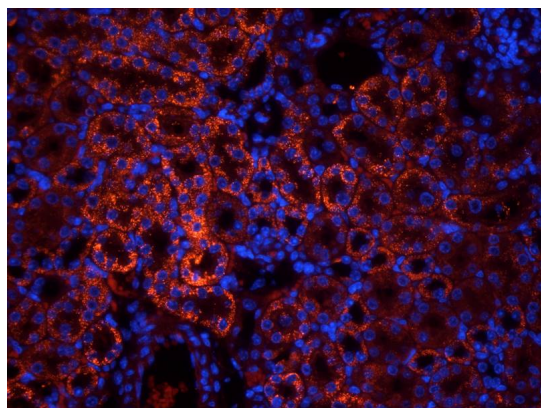
Phone: +1 (415) 906-5211 | Fax: +1 (415) 651-8558



Western blot analysis of mouse brain (lane 1), mouse colon (lane 2), mouse kidney (lane 3), rat spleen (lane 4), human breast cancer (lane 5), U251 cells (lane 6), 293T cells (lane 7) using CD146 antibody (1 ug/ml)



Immunohistochemical staining of rat brain tissue using CD146 antibody (dilution of primary antibody - 2.5 ug/ml)



IF analysis of mouse kidney tissue using CD146 antibody (dilution of primary antibody at 2.5 ug/ml)

Biorbyt Ltd.

7 Signet Court, Swann Road
Cambridge
CB5 8LA
United Kingdom

Email: info@biorbyt.com, support@biorbyt.com

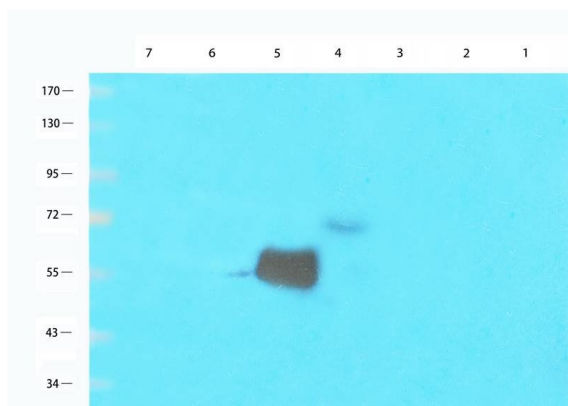
Phone: +44 (0)1223 859353 | Fax: +1 (415) 651-8558

Biorbyt LLC

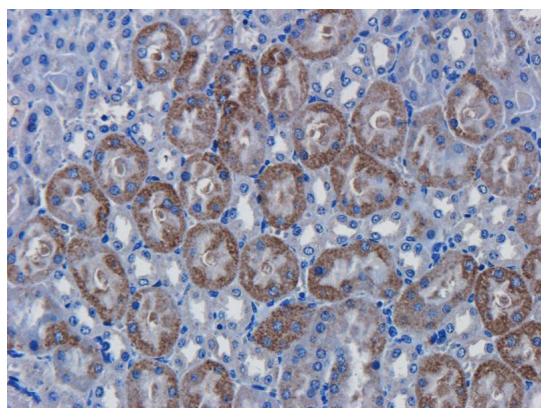
68 TW Alexander Drive
Research Triangle Park
Durham
NC 27713
United States

Email: info@biorbyt.com, support@biorbyt.com

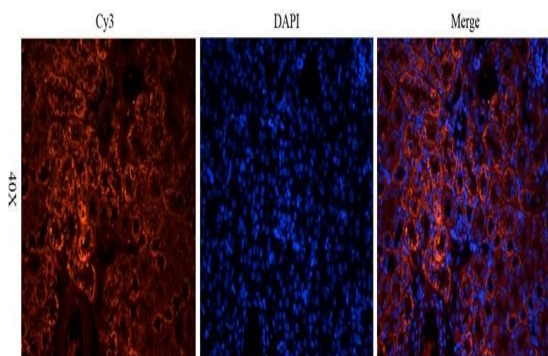
Phone: +1 (415) 906-5211 | Fax: +1 (415) 651-8558



WB analysis of mouse brain (lane 1), mouse colon (lane 2), mouse kidney (lane 3), rat spleen (lane 4), human breast cancer (lane 5), U251 cells (lane 6), 293T cells (lane 7) using CD146 antibody (1 ug/ml)



IHC-P staining of mouse kidney tissue using anti-CD146 (dilution at 2.5 ug/ml)



Immunofluorescence image of mouse kidney tissue using anti-CD146 (dilution at 2.5 ug/ml)

Biorbyt Ltd.

7 Signet Court, Swann Road
Cambridge
CB5 8LA
United Kingdom

Email: info@biorbyt.com, support@biorbyt.com

Phone: +44 (0)1223 859353 | Fax: +1 (415) 651-8558

Biorbyt LLC

68 TW Alexander Drive
Research Triangle Park
Durham
NC 27713
United States

Email: info@biorbyt.com, support@biorbyt.com

Phone: +1 (415) 906-5211 | Fax: +1 (415) 651-8558