

Product Datasheet

CD105 Rabbit Polyclonal Antibody (orb10285)

Catalog Number	orb10285
Category	Antibodies
Description	CD105 Rabbit Polyclonal Antibody
Target	CD105
Clonality	Polyclonal
Species/Host	Rabbit
Isotype	IgG
Conjugation	Unconjugated
Form/Appearance	10 mM PBS, 0.02% sodium azide
Concentration	- 100 µg (in 200 µl): 0.5 mg/ml- 200 µg (in 400 µl): 0.5 mg/ml
Purity	Affinity purified
Immunogen	KLH conjugated synthetic peptide derived from human CD105. Please contact us for the exact immunogen sequence. The peptide is available as orb374706.
UniProt ID	P17813, Q63961, P37176
RRID	AB_10747034
MW	70 kDa
Tested applications	ELISA, IHC-P, WB
Dilution range	WB: 1:100-600, IHC-P: 1:200 (based on 0.5mg/ml)

Biorbyt Ltd.

7 Signet Court, Swann Road
Cambridge
CB5 8LA
United Kingdom

Email: info@biorbyt.com, support@biorbyt.com

Phone: [+44 \(0\)1223 859353](tel:+44(0)1223859353) | Fax: [+1 \(415\) 651-8558](tel:+1(415)651-8558)

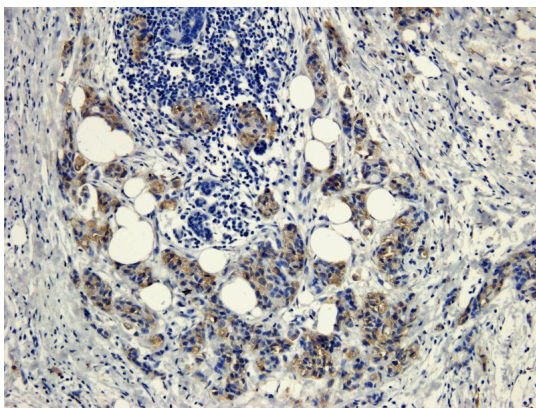
Biorbyt LLC

68 TW Alexander Drive
Research Triangle Park
Durham
NC 27713
United States

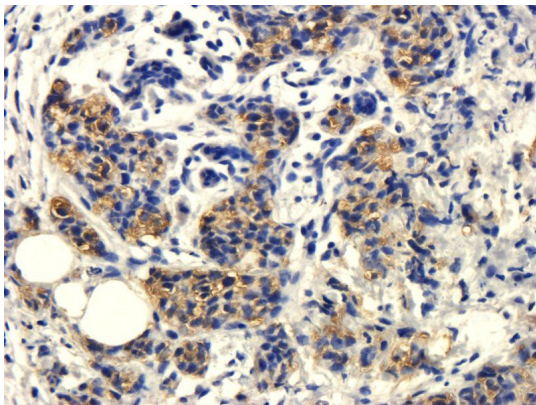
Email: info@biorbyt.com, support@biorbyt.com

Phone: [+1 \(415\) 906-5211](tel:+1(415)906-5211) | Fax: [+1 \(415\) 651-8558](tel:+1(415)651-8558)

Storage	Maintain refrigerated at 2-8°C for up to 2 weeks. For long term storage store at -20°C in small aliquots to prevent freeze-thaw cycles.
Note	For research use only
Entrez	2022
NCBI	000118, 000109, 11, 31
Expiration Date	12 months from date of receipt.



IHC-P staining of human breast cancer tissue using CD105 antibody (dilution at 1:200)



IHC-P image of human breast cancer tissue using CD105 antibody (dilution of primary antibody at 1:200)

Biorbyt Ltd.

7 Signet Court, Swann Road
Cambridge
CB5 8LA
United Kingdom

Email: info@biorbyt.com, support@biorbyt.com

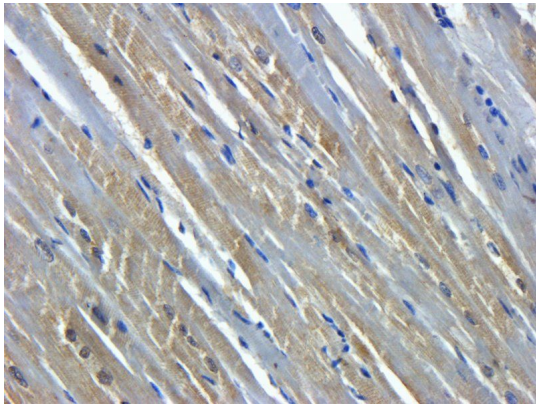
Phone: [+44 \(0\)1223 859353](tel:+44(0)1223859353) | Fax: [+1 \(415\) 651-8558](tel:+1(415)651-8558)

Biorbyt LLC

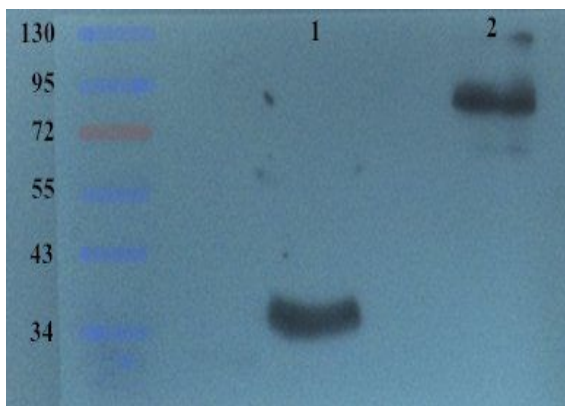
68 TW Alexander Drive
Research Triangle Park
Durham
NC 27713
United States

Email: info@biorbyt.com, support@biorbyt.com

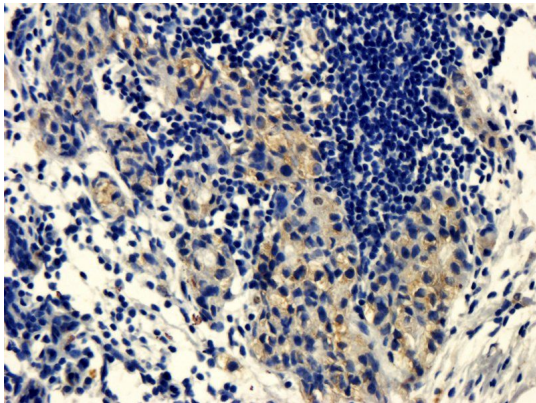
Phone: [+1 \(415\) 906-5211](tel:+1(415)906-5211) | Fax: [+1 \(415\) 651-8558](tel:+1(415)651-8558)



Immunohistochemical staining of pig heart tissue using CD105 antibody (dilution of primary antibody - 1:200)



Western blot analysis of Rat kidney (Lane 1), Rat large intestine (Lane 2) using CD105 antibody (primary antibody dilution at 2 ug/ml)



Immunohistochemical staining of paraffin embedded human breast cancer tissue using anti-CD105 (primary antibody at 1:200)

Biorbyt Ltd.

7 Signet Court, Swann Road
Cambridge
CB5 8LA
United Kingdom

Email: info@biorbyt.com, support@biorbyt.com

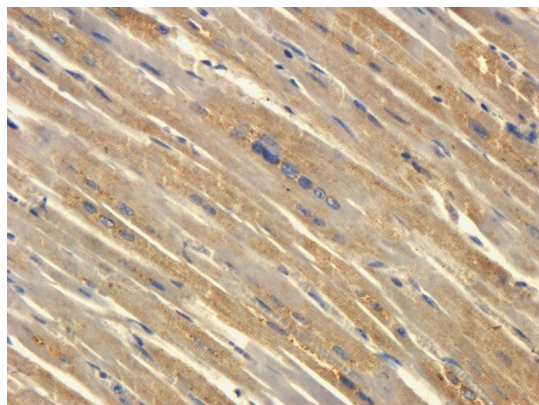
Phone: +44 (0)1223 859353 | Fax: +1 (415) 651-8558

Biorbyt LLC

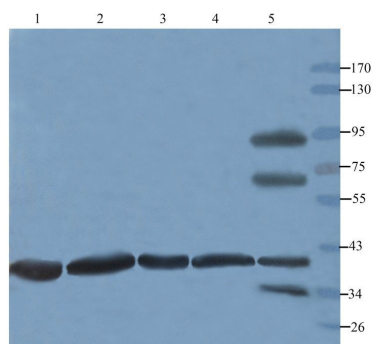
68 TW Alexander Drive
Research Triangle Park
Durham
NC 27713
United States

Email: info@biorbyt.com, support@biorbyt.com

Phone: +1 (415) 906-5211 | Fax: +1 (415) 651-8558



Immunohistochemical staining of pig heart tissue using CD105 antibody (dilution of primary antibody - 1:200)



Western blot analysis of rat kidney (lane 1), rat large intestines (lane 2), mouse spleen (lane 3), rat ovary (lane 4); HeLa cells (lane 5) using CD105 antibody (3 ug/ml)

Biorbyt Ltd.

7 Signet Court, Swann Road
Cambridge
CB5 8LA
United Kingdom

Email: info@biorbyt.com, support@biorbyt.com

Phone: [+44 \(0\)1223 859353](tel:+44(0)1223859353) | Fax: [+1 \(415\) 651-8558](tel:+1(415)651-8558)

Biorbyt LLC

68 TW Alexander Drive
Research Triangle Park
Durham
NC 27713
United States

Email: info@biorbyt.com, support@biorbyt.com

Phone: [+1 \(415\) 906-5211](tel:+1(415)906-5211) | Fax: [+1 \(415\) 651-8558](tel:+1(415)651-8558)