

## Product Datasheet

# CXCL10/IP10 Rabbit Polyclonal Antibody (orb10277)

|                             |   |
|-----------------------------|---|
| <b>Catalog Number</b>       | orb10277  |
| <b>Category</b>             | Antibodies  |
| <b>Description</b>          | CXCL10/IP10 Rabbit Polyclonal Antibody                                  |
| <b>Target</b>               | CXCL10  |
| <b>Clonality</b>            | Polyclonal  |
| <b>Species/Host</b>         | Rabbit  |
| <b>Isotype</b>              | IgG   |
| <b>Conjugation</b>          | Unconjugated  |
| <b>Reactivity</b>           | Human, Mouse, Rat   |
| <b>Predicted Reactivity</b> | Human, Rat  |
| <b>Form/Appearance</b>      | Liquid  |
| <b>Concentration</b>        | 1mg/ml  |
| <b>Buffer/Preservatives</b> | 0.01M TBS (pH7.4) with 1% rAlbumin, 0.02% Proclin300 and 50% Glycerol.  |
| <b>Purification</b>         | Affinity purified by Protein A  |
| <b>Immunogen</b>            | KLH conjugated synthetic peptide derived from mouse CXCL10 (35-98/98aa) |
| <b>UniProt ID</b>           | <b>P17515</b>   |
| <b>RRID</b>                 | AB_10753261   |

**Biorbyt Ltd.**

7 Signet Court, Swann Road  
Cambridge  
CB5 8LA  
United Kingdom

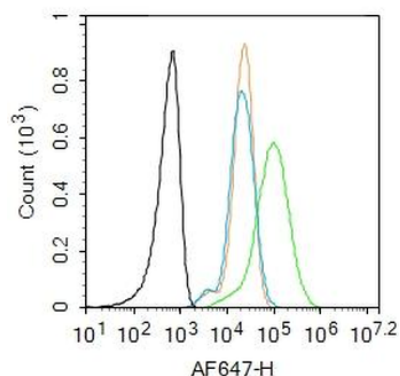
Email: [info@biorbyt.com](mailto:info@biorbyt.com), [support@biorbyt.com](mailto:support@biorbyt.com)  
Phone: [+44 \(0\)1223 859353](tel:+44(0)1223859353) | Fax: [+1 \(415\) 651-8558](tel:+1(415)651-8558)

**Biorbyt LLC**

68 TW Alexander Drive  
Research Triangle Park  
Durham  
NC 27713  
United States

Email: [info@biorbyt.com](mailto:info@biorbyt.com), [support@biorbyt.com](mailto:support@biorbyt.com)  
Phone: [+1 \(415\) 906-5211](tel:+1(415)906-5211) | Fax: [+1 \(415\) 651-8558](tel:+1(415)651-8558)

|                            |   |
|----------------------------|---|
| <b>MW</b>                  | 10 kDa  |
| <b>Tested applications</b> | FC, IF, IHC-Fr, IHC-P   |
| <b>Dilution range</b>      | IHC-P=1:100-500, IHC-F=1:100-500, IF=1:100-500, Flow-Cyt=1ug/Test   |
| <b>Antibody Type</b>       | Primary Antibody  |
| <b>Storage</b>             | Maintain refrigerated at 2-8°C for up to 2 weeks. For long term storage store at -20°C in small aliquots to prevent freeze-thaw cycles. |
| <b>Note</b>                | For research use only   |
| <b>Expiration Date</b>     | 12 months from date of receipt.   |



Blank control: Raw264.7. Primary Antibody (green line): Rabbit Anti-CXCL10/IP10 antibody (orb10277), Dilution: 1  $\mu\text{g}/10^6$  cells, Isotype Control Antibody (orange line): Rabbit IgG. Secondary Antibody: Goat anti-rabbit IgG-AF647, Dilution: 1  $\mu\text{g}/\text{test}$ . Protocol, The cells were fixed with 4% PFA (10 min at room temperature) and then permeabilized with 0.1% PBST for 20 min at room temperature. The cells were then incubated in 5% BSA to block non-specific protein-protein interactions for 30 min at room temperature. Cells stained with Primary Antibody for 30 min at room temperature. The secondary antibody used for 40 min at room temperature. Acquisition of 20000 events was performed.

**Biorbyt Ltd.**

7 Signet Court, Swann Road  
Cambridge  
CB5 8LA  
United Kingdom

Email: [info@biorbyt.com](mailto:info@biorbyt.com), [support@biorbyt.com](mailto:support@biorbyt.com)

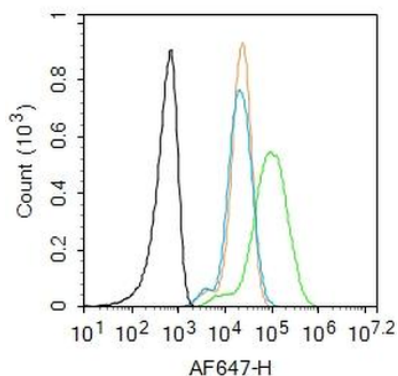
Phone: +44 (0)1223 859353 | Fax: +1 (415) 651-8558

**Biorbyt LLC**

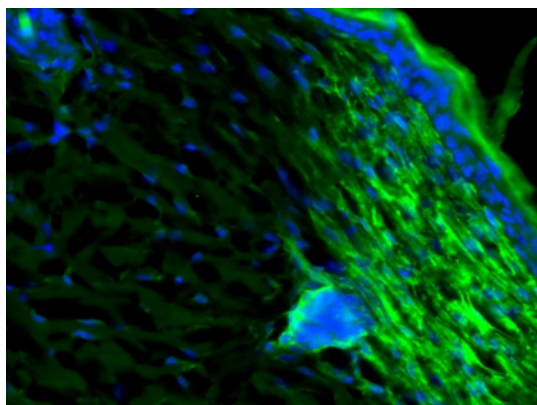
68 TW Alexander Drive  
Research Triangle Park  
Durham  
NC 27713  
United States

Email: [info@biorbyt.com](mailto:info@biorbyt.com), [support@biorbyt.com](mailto:support@biorbyt.com)

Phone: +1 (415) 906-5211 | Fax: +1 (415) 651-8558



Blank control: Raw264.7. Primary Antibody (green line): Rabbit Anti-CXCL10/IP10 antibody (orb10277), Dilution: 1  $\mu\text{g}/10^6$  cells, Isotype Control Antibody (orange line): Rabbit IgG. Secondary Antibody: Goat anti-rabbit IgG-AF647, Dilution: 1  $\mu\text{g}/\text{test}$ . Protocol, The cells were fixed with 4% PFA (10 min at room temperature) and then permeabilized with 0.1% PBST for 20 min at room temperature. The cells were then incubated in 5% BSA to block non-specific protein-protein interactions for 30 min at room temperature. Cells stained with Primary Antibody for 30 min at room temperature. The secondary antibody used for 40 min at room temperature. Acquisition of 20000 events was performed.



C57BL/6 mice skin were fixed in pre-chilled MeOH and incubated at  $-20^{\circ}\text{C}$  for 10 minutes. They were washed in PBS at RT 3 times for 5 minutes each. The sections were blocked for 60 minutes at RT with PBS containing 5% BSA. The block was removed, anti-CXCL10 antibody (orb10277) diluted 1:50 was added, then incubated overnight at  $4^{\circ}\text{C}$ . Then washed with PBS (0.005% Tween20) for 15 minutes each followed by 2 washes of PBS for 5 minutes each. The secondary antibody, anti-rabbit A488 was diluted 1:500, added to the sections and incubated for 1 hour at RT. Then washed for 10 minutes in PBS 4 times.

**Biorbyt Ltd.**

7 Signet Court, Swann Road  
Cambridge  
CB5 8LA  
United Kingdom

Email: [info@biorbyt.com](mailto:info@biorbyt.com), [support@biorbyt.com](mailto:support@biorbyt.com)  
Phone: +44 (0)1223 859353 | Fax: +1 (415) 651-8558

**Biorbyt LLC**

68 TW Alexander Drive  
Research Triangle Park  
Durham  
NC 27713  
United States

Email: [info@biorbyt.com](mailto:info@biorbyt.com), [support@biorbyt.com](mailto:support@biorbyt.com)  
Phone: +1 (415) 906-5211 | Fax: +1 (415) 651-8558