

Product Datasheet

Calreticulin Rabbit Polyclonal Antibody (FITC) (orb102221)

Catalog Number	orb102221
Category	Antibodies
Description	Calreticulin Rabbit Polyclonal Antibody (FITC) is an FITC conjugated antibody targeting CALR. This antibody is suitable for IF. It exhibits reactivity with Human samples.
Target	CALR
Clonality	Polyclonal
Species/Host	Rabbit
Isotype	IgG
Conjugation	FITC
Reactivity	Human
Predicted Reactivity	Bovine, Canine, Equine, Gallus, Guinea pig, Porcine, Rabbit
Concentration	1mg/ml
Buffer/Preservatives	0.01M TBS (pH7.4) with 1% rAlbumin, 0.02% Proclin300 and 50% Glycerol.
Purification	Affinity purified by Protein A
Immunogen	KLH conjugated synthetic peptide derived from human Calreticulin (101-200/417aa)
Tested applications	IF

Biorbyt Ltd.

7 Signet Court, Swann Road
Cambridge
CB5 8LA
United Kingdom

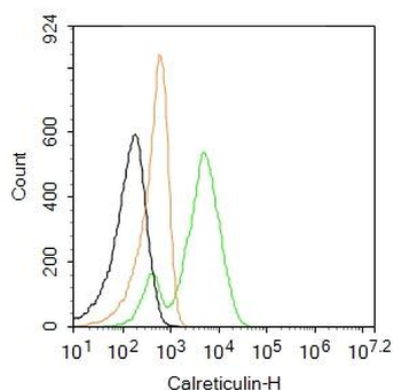
Email: info@biorbyt.com, support@biorbyt.com
Phone: [+44 \(0\)1223 859353](tel:+44(0)1223859353) | Fax: [+1 \(415\) 651-8558](tel:+1(415)651-8558)

Biorbyt LLC

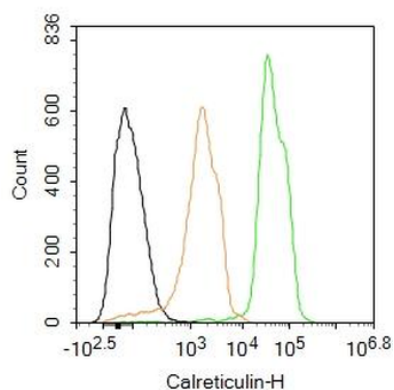
68 TW Alexander Drive
Research Triangle Park
Durham
NC 27713-2847
United States

Email: info@biorbyt.com, support@biorbyt.com
Phone: [+1 \(415\) 906-5211](tel:+1(415)906-5211) | Fax: [+1 \(415\) 651-8558](tel:+1(415)651-8558)

Dilution range	IF=1:100-500
Antibody Type	Primary Antibody
Storage	Shipped at 4°C. Store at -20°C for one year. Avoid repeated freeze/thaw cycles.
Note	For research use only
Expiration Date	12 months from date of receipt.



Blank control: K562. Primary Antibody (green line): Rabbit Anti-Calreticulin antibody (orb102221), Dilution: 1 $\mu\text{g}/10^6$ cells, Isotype Control Antibody (orange line): Rabbit IgG. Protocol, The cells were fixed with 4% PFA (10 min at room temperature) and then permeabilized with 0.1% PBST for 20 min at room temperature. The cells were then incubated in 5% BSA to block non-specific protein-protein interactions for 30 min at room temperature. Cells stained with Primary Antibody for 30 min at room temperature. Acquisition of 20000 events was performed.



Blank control: K562. Primary Antibody (green line): Rabbit Anti-Calreticulin antibody, Dilution: 1 $\mu\text{g}/\text{Test}$, Protocol, The cells were fixed with 4% PFA (10 min at room temperature) and then permeabilized with 90% ice-cold methanol for 20 min at -20°C. The cells were then incubated in 5% BSA to block non-specific protein-protein interactions for 30 min at room temperature. Cells stained with Primary Antibody for 30 min at room temperature. Acquisition of 20000 events was performed.

Biorbyt Ltd.

7 Signet Court, Swann Road
Cambridge
CB5 8LA
United Kingdom

Email: info@biorbyt.com, support@biorbyt.com
Phone: +44 (0)1223 859353 | Fax: +1 (415) 651-8558

Biorbyt LLC

68 TW Alexander Drive
Research Triangle Park
Durham
NC 27713-2847
United States

Email: info@biorbyt.com, support@biorbyt.com
Phone: +1 (415) 906-5211 | Fax: +1 (415) 651-8558